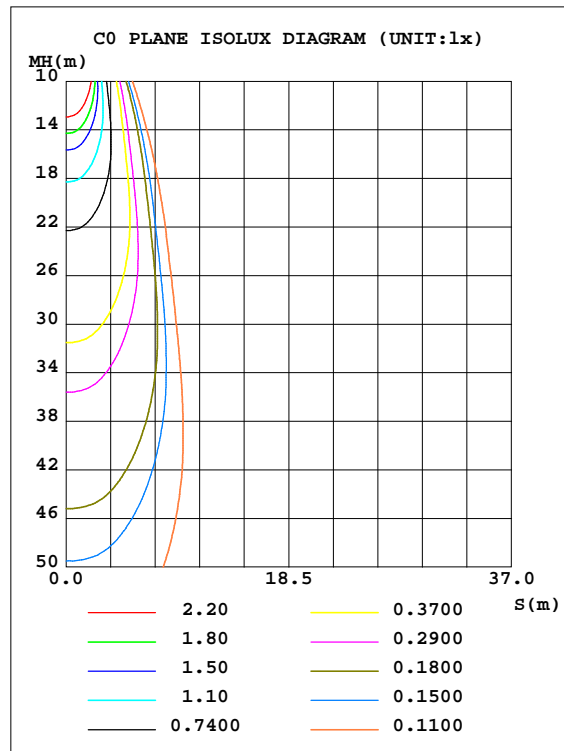
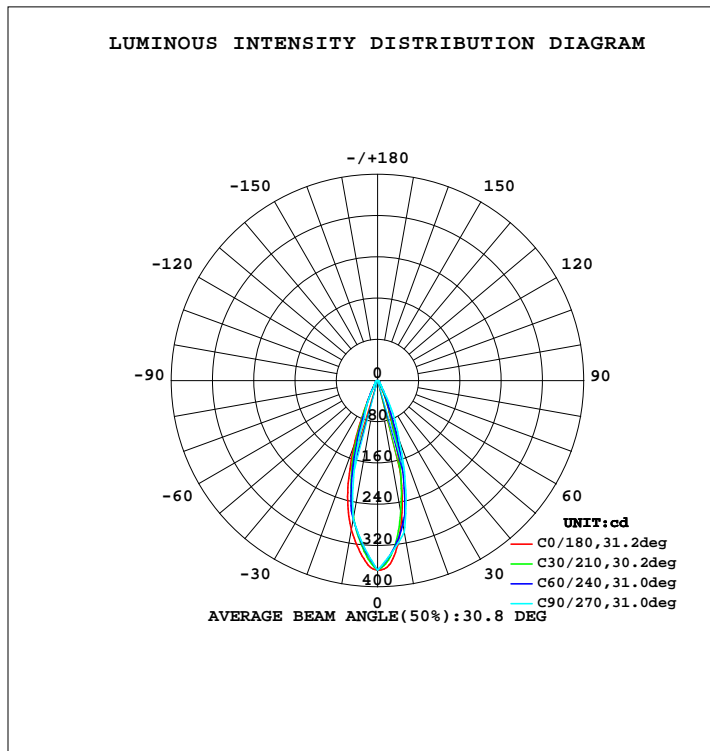


LUMINAIRE PHOTOMETRIC TEST REPORT

REL21

	TYPE:Emergency light	WEIGHT:
SPEC.:2W LED	DIM.:	SERIAL No.:20140103
	SUR.:	PROTECTION ANGLE:

DATA OF LAMP		PHOTOMETRIC DATA				Eff: 55.30 lm/W
MODEL		Imax(cd)	367.7	S/MH(C0/180)		0.55
NOMINAL POWER(W)	1.5	LOR(%)	100.0	S/MH(C90/270)		0.47
RATED VOLTAGE(V)	4	TOTAL FLUX(lm)	124.56	h UP, DN(C0-180)		0.0, 52.2
NOMINAL FLUX(lm)	124.562	CIE CLASS	DIRECT	h UP, DN(C180-360)		0.0, 47.8
LAMPS INSIDE	1	h up(%)	0.0	CIBSE SHR NOM		0.50
TEST VOLTAGE(V)		h down(%)	100.0	CIBSE SHR MAX		0.50



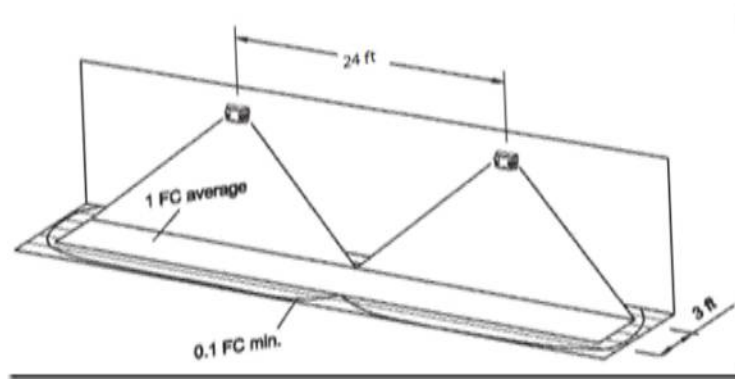
C Range: 0 - 360DEG
C Interval: 5.0DEG
Test Speed: HIGH
Temperature:25.3DEG
Operators:Harris Chen
Test Date:2014-01-03

g Range: 0 - 90DEG
g Interval: 0.5DEG
Test System:EVERFINE GO-2000H_V1 SYSTEM V2.0.287
Humidity:65.0%
Test Distance:13.450m [K=1.0000]
Remarks:

ZONAL FLUX DIAGRAM

ZONAL FLUX DIAGRAM:

g	C0	C45	C90	C135	C180	C225	C270	C315	g	F zone	F total	%lum,lamp
5	346.7	332.5	333.2	332.2	341.9	323.9	320.2	322.8	0- 5	8.244	8.244	6.62,6.62
10	270.6	270.0	298.7	287.3	293.7	269.7	272.8	250.4	5- 10	21.48	29.73	23.9,23.9
15	158.5	185.5	210.6	228.5	224.9	201.0	174.5	156.5	10- 15	27.35	57.08	45.8,45.8
20	70.04	95.05	122.6	136.4	133.4	115.3	76.15	74.15	15- 20	23.26	80.35	64.5,64.5
25	32.58	38.13	70.76	60.02	54.75	50.42	45.99	34.23	20- 25	14.78	95.12	76.4,76.4
30	13.80	17.36	18.95	24.94	22.15	21.33	15.83	16.13	25- 30	8.107	103.2	82.9,82.9
35	9.251	10.18	13.52	13.86	12.72	11.91	12.05	10.22	30- 35	4.300	107.5	86.3,86.3
40	7.412	7.201	8.086	8.899	8.256	7.793	8.267	7.715	35- 40	3.206	110.7	88.9,88.9
45	6.109	6.091	6.854	6.903	6.600	6.574	7.298	6.442	40- 45	2.684	113.4	91.1,91.1
50	5.222	5.461	5.623	5.453	5.328	5.614	6.329	5.301	45- 50	2.447	115.9	93,93
55	4.109	4.388	4.674	4.525	4.168	4.855	5.254	4.301	50- 55	2.183	118.1	94.8,94.8
60	3.109	3.281	3.725	3.742	3.654	4.129	4.179	3.294	55- 60	1.883	119.9	96.3,96.3
65	2.272	2.481	2.897	2.894	2.944	3.166	3.195	2.569	60- 65	1.556	121.5	97.5,97.5
70	1.597	1.767	2.069	2.183	2.069	2.400	2.211	1.848	65- 70	1.220	122.7	98.5,98.5
75	0.9998	1.084	1.464	1.654	1.534	1.774	1.549	1.161	70- 75	0.8998	123.6	99.2,99.2
80	0.5155	0.6671	0.8580	1.041	0.8984	1.135	0.8883	0.7567	75- 80	0.6072	124.2	99.7,99.7
85	0.2020	0.1875	0	0.2786	0.4537	0.3191	0	0.2271	80- 85	0.3005	124.5	100,100
90	0.0505	0	0	0	0.0458	0	0	0	85- 90	0.0446	124.6	100,100
95									90- 95			
100									95-100			
105									100-105			
110									105-110			
115									110-115			
120									115-120			
125									120-125			
130									125-130			
135									130-135			
140									135-140			
145									140-145			
150									145-150			
155									150-155			
160									155-160			
165									160-165			
170									165-170			
175									170-175			
180									175-180			
DEG	LUMINOUS INTENSITY:cd									UNIT:lm		



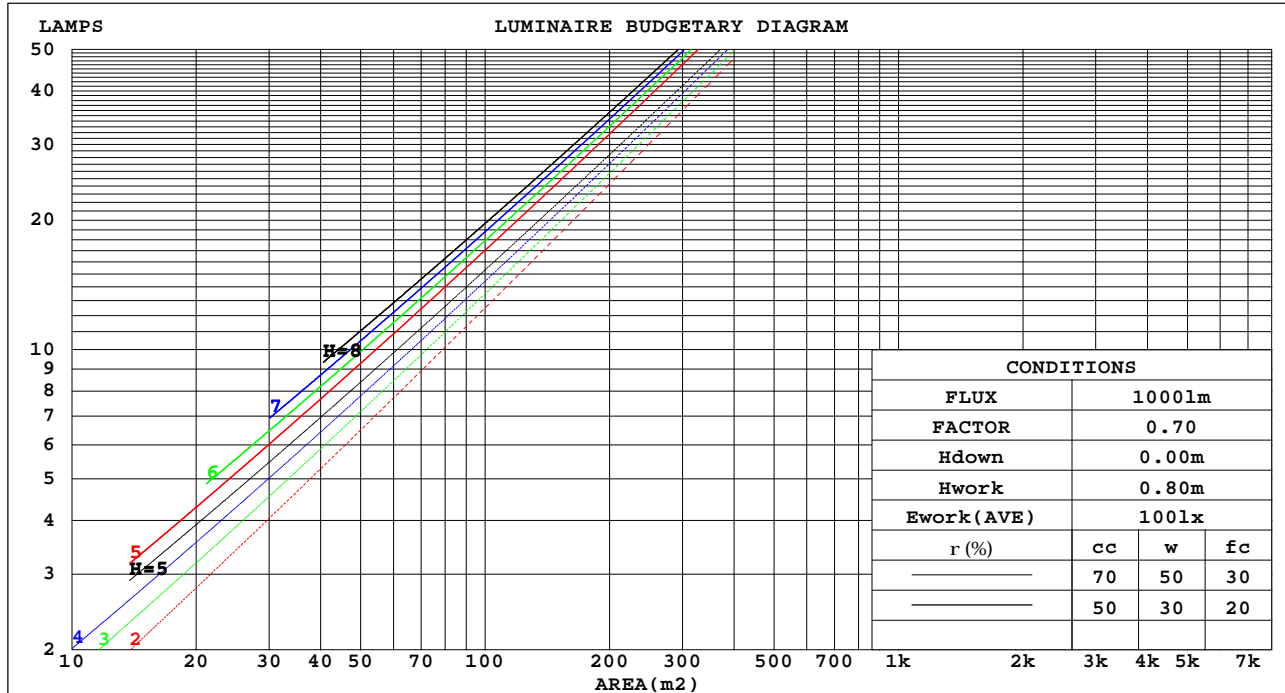
C Range: 0 - 360DEG
 C Interval: 5.0DEG
 Test Speed: HIGH
 Temperature:25.3DEG
 Operators:Harris Chen
 Test Date:2014-01-03

g Range: 0 - 90DEG
 g Interval: 0.5DEG
 Test System:EVERFINE GO-2000H_V1 SYSTEM V2.0.287
 Humidity:65.0%
 Test Distance:13.450m [K=1.0000]
 Remarks:

CU AND LUMINAIRE BUDGETARY ESTIMATE DIAGRAM

	TYPE:Emergency light	WEIGHT:
SPEC.:2W LED	DIM.:	SERIAL No.:20140103
	SUR.:	PROTECTION ANGLE:

rcc	80%			70%			50%			30%			10%			0
rw	50%	30%	10%	50%	30%	10%	50%	30%	10%	50%	30%	10%	50%	30%	10%	0
rfc	20%			20%			20%			20%			20%			0
RCR	RCR:Room Cavity Ratio						Coefficients of Utilization(CU)									
0.0	1.19	1.19	1.19	1.16	1.16	1.16	1.11	1.11	1.11	1.06	1.06	1.06	1.02	1.02	1.02	1.00
1.0	1.11	1.09	1.07	1.09	1.07	1.05	1.05	1.03	1.02	1.01	.00	.99	.98	.97	.96	.94
2.0	1.04	1.00	.97	1.02	.99	.96	.99	.96	.94	.96	.94	.92	.94	.92	.90	.89
3.0	.98	.94	.90	.97	.93	.89	.94	.91	.88	.92	.89	.87	.90	.87	.85	.84
4.0	.93	.88	.84	.92	.87	.84	.90	.86	.83	.88	.85	.82	.86	.83	.81	.79
5.0	.88	.83	.79	.88	.83	.79	.86	.82	.78	.84	.81	.78	.83	.80	.77	.76
6.0	.84	.79	.75	.84	.79	.75	.82	.78	.75	.81	.77	.74	.80	.76	.74	.72
7.0	.81	.76	.72	.80	.75	.72	.79	.75	.71	.78	.74	.71	.77	.73	.71	.69
8.0	.78	.72	.69	.77	.72	.69	.76	.72	.68	.75	.71	.68	.74	.71	.68	.67
9.0	.75	.70	.66	.74	.69	.66	.73	.69	.66	.72	.68	.66	.72	.68	.65	.64
10.0	.72	.67	.64	.71	.67	.64	.71	.66	.63	.70	.66	.63	.69	.66	.63	.62



C Range: 0 - 360DEG
 C Interval: 5.0DEG
 Test Speed: HIGH
 Temperature:25.3DEG
 Operators:Harris Chen
 Test Date:2014-01-03

g Range: 0 - 90DEG
 g Interval: 0.5DEG
 Test System:EVERFINE GO-2000H_V1 SYSTEM V2.0.287
 Humidity:65.0%
 Test Distance:13.450m [K=1.0000]
 Remarks:

WEC AND CCEC

	TYPE:Emergency light	WEIGHT:
SPEC.:2W LED	DIM.:	SERIAL No.:20140103
	SUR.:	PROTECTION ANGLE:

rcc	80%			70%			50%			30%			10%			0
rw	50%	30%	10%	50%	30%	10%	50%	30%	10%	50%	30%	10%	50%	30%	10%	0
rfc	20%			20%			20%			20%			20%			0
RCR	RCR:Room Cavity Ratio						Wall Exitance Coefficients(WEC)									
0.0																
1.0	.171	.097	.031	.164	.094	.030	.152	.087	.028	.140	.081	.026	.129	.075	.024	
2.0	.160	.088	.027	.154	.085	.026	.144	.080	.025	.134	.075	.024	.125	.071	.022	
3.0	.149	.080	.024	.145	.077	.023	.136	.074	.022	.128	.070	.021	.120	.066	.021	
4.0	.140	.073	.021	.136	.071	.021	.128	.068	.020	.121	.065	.020	.115	.062	.019	
5.0	.131	.067	.019	.128	.066	.019	.121	.063	.019	.115	.061	.018	.109	.058	.018	
6.0	.124	.062	.018	.121	.061	.018	.115	.059	.017	.110	.057	.017	.105	.055	.016	
7.0	.117	.058	.016	.114	.057	.016	.109	.055	.016	.105	.054	.016	.100	.052	.015	
8.0	.111	.054	.015	.109	.054	.015	.104	.052	.015	.100	.051	.015	.096	.049	.014	
9.0	.106	.051	.014	.104	.051	.014	.100	.049	.014	.096	.048	.014	.093	.047	.014	
10.0	.101	.048	.013	.099	.048	.013	.096	.047	.013	.092	.046	.013	.089	.045	.013	

rcc	80%			70%			50%			30%			10%			0
rw	50%	30%	10%	50%	30%	10%	50%	30%	10%	50%	30%	10%	50%	30%	10%	0
rfc	20%			20%			20%			20%			20%			0
RCR	RCR:Room Cavity Ratio						Ceiling Cavity Exitance Coefficients(CCEC)									
0.0	.190	.190	.190	.163	.163	.163	.111	.111	.111	.064	.064	.064	.020	.020	.020	
1.0	.171	.157	.145	.146	.135	.125	.100	.093	.087	.058	.054	.050	.018	.017	.016	
2.0	.155	.133	.114	.132	.114	.099	.091	.079	.069	.052	.046	.040	.017	.015	.013	
3.0	.141	.113	.091	.121	.098	.079	.083	.068	.056	.048	.040	.033	.015	.013	.011	
4.0	.130	.099	.075	.111	.085	.065	.077	.059	.046	.044	.035	.027	.014	.011	.009	
5.0	.120	.087	.062	.103	.075	.054	.071	.052	.038	.041	.031	.023	.013	.010	.007	
6.0	.112	.077	.052	.096	.067	.045	.066	.047	.032	.038	.027	.019	.012	.009	.006	
7.0	.105	.069	.044	.090	.060	.039	.062	.042	.027	.036	.025	.016	.012	.008	.005	
8.0	.098	.063	.038	.085	.054	.033	.058	.038	.024	.034	.023	.014	.011	.007	.005	
9.0	.093	.057	.033	.080	.050	.029	.055	.035	.021	.032	.021	.012	.010	.007	.004	
10.0	.088	.053	.029	.076	.046	.026	.052	.032	.018	.031	.019	.011	.010	.006	.004	

C Range: 0 - 360DEG
 C Interval: 5.0DEG
 Test Speed: HIGH
 Temperature:25.3DEG
 Operators:Harris Chen
 Test Date:2014-01-03

g Range: 0 - 90DEG
 g Interval: 0.5DEG
 Test System:EVERFINE GO-2000H_V1 SYSTEM V2.0.287
 Humidity:65.0%
 Test Distance:13.450m [K=1.0000]
 Remarks:

UGR(Unified Glare Rating) Table

					TYPE:Emergency light	WEIGHT:				
SPEC.:2W LED					DIM.:	SERIAL No.:20140103				
					SUR.:	PROTECTION ANGLE:				
ceiling/cavity	0.7	0.7	0.5	0.5	0.3	0.7	0.7	0.5	0.5	0.3
walls	0.5	0.3	0.5	0.3	0.3	0.5	0.3	0.5	0.3	0.3
working plane	0.2	0.2	0.2	0.2	0.2	0.2	0.2	0.2	0.2	0.2
Room dimensions	Viewed crosswise					Viewed endwise				
x = 2H y = 2H	21.8	22.7	22.0	22.8	23.0	23.0	23.9	23.2	24.0	24.2
3H	22.7	23.5	23.0	23.7	23.9	24.1	24.9	24.4	25.1	25.3
4H	23.1	23.8	23.3	24.0	24.2	24.6	25.3	24.9	25.5	25.8
6H	23.2	23.9	23.5	24.2	24.4	24.9	25.6	25.2	25.9	26.1
8H	23.3	23.9	23.6	24.2	24.4	25.0	25.7	25.3	25.9	26.2
12H	23.3	23.9	23.6	24.2	24.4	25.0	25.6	25.3	25.9	26.1
4H 2H	22.4	23.1	22.7	23.3	23.6	23.4	24.1	23.7	24.3	24.6
3H	23.4	24.1	23.7	24.3	24.6	24.7	25.3	25.0	25.6	25.9
4H	23.8	24.4	24.1	24.7	25.0	25.2	25.8	25.6	26.1	26.4
6H	24.0	24.6	24.4	24.9	25.2	25.7	26.2	26.1	26.6	26.9
8H	24.1	24.6	24.5	24.9	25.3	25.8	26.3	26.2	26.6	27.0
12H	24.1	24.5	24.5	24.9	25.3	25.8	26.2	26.2	26.6	27.0
8H 4H	24.0	24.5	24.4	24.8	25.2	25.3	25.8	25.7	26.2	26.5
6H	24.3	24.7	24.7	25.1	25.5	25.9	26.3	26.3	26.7	27.1
8H	24.4	24.7	24.8	25.1	25.6	26.0	26.4	26.5	26.8	27.3
12H	24.4	24.7	24.9	25.1	25.6	26.0	26.3	26.5	26.8	27.2
12H 4H	24.0	24.4	24.4	24.8	25.2	25.3	25.7	25.7	26.1	26.5
6H	24.3	24.7	24.8	25.1	25.6	25.9	26.3	26.3	26.7	27.1
8H	24.4	24.7	24.9	25.2	25.7	26.1	26.4	26.5	26.8	27.3
Variations with the observer position at spacings:										
S = 1.0H	+ 0.3 / - 0.4					+ 0.2 / - 0.3				
1.5H	+ 0.2 / - 0.2					+ 0.3 / - 0.3				
2.0H	+ 0.7 / - 0.7					+ 0.4 / - 0.4				

CIE Pub.117 Corrected 124.6 lm Total Lamp Luminous Flux.(8log(F/F0) = -7.2)

C Range: 0 - 360DEG
 C Interval: 5.0DEG
 Test Speed: HIGH
 Temperature:25.3DEG
 Operators:Harris Chen
 Test Date:2014-01-03

g Range: 0 - 90DEG
 g Interval: 0.5DEG
 Test System:EVERFINE GO-2000H_V1 SYSTEM V2.0.287
 Humidity:65.0%
 Test Distance:13.450m [K=1.0000]
 Remarks:

UTILIZATION FACTORS TABLE

	TYPE:Emergency light	WEIGHT:
SPEC.:2W LED	DIM.:	SERIAL No.:20140103
	SUR.:	PROTECTION ANGLE:

REFLECTANCE										
Ceiling	0.8	0.8	0.8	0.7	0.7	0.7	0.5	0.5	0.5	0
Walls	0.7	0.5	0.3	0.7	0.5	0.3	0.7	0.5	0.3	0
Working plane	0.2	0.2	0.2	0.2	0.2	0.2	0.2	0.2	0.2	0
ROOM INDEX	UTILIZATION FACTORS(PERCENT) $k(RI) \times RCR = 5$									
k = 0.60	85	78	74	84	78	74	83	77	74	70
0.80	92	86	82	92	86	82	90	85	81	77
1.00	97	91	87	96	90	87	94	90	86	82
1.25	101	95	92	100	95	91	98	94	90	86
1.50	104	99	95	103	98	95	101	97	94	89
2.00	107	103	99	106	101	98	103	99	97	91
2.50	109	105	102	107	104	101	104	101	99	93
3.00	111	107	104	109	106	103	106	103	101	94
4.00	113	110	108	111	108	106	107	105	103	96
5.00	114	112	110	112	110	108	108	107	105	97
ROOM INDEX	UF(total)									Direct
According to DIN EN 13032-2 2004			Suspended				SHRNOM = 1.25			

C Range: 0 - 360DEG
 C Interval: 5.0DEG
 Test Speed: HIGH
 Temperature:25.3DEG
 Operators:Harris Chen
 Test Date:2014-01-03

g Range: 0 - 90DEG
 g Interval: 0.5DEG
 Test System:EVERFINE GO-2000H_V1 SYSTEM V2.0.287
 Humidity:65.0%
 Test Distance:13.450m [K=1.0000]
 Remarks:

ISOCANDELA DIAGRAM

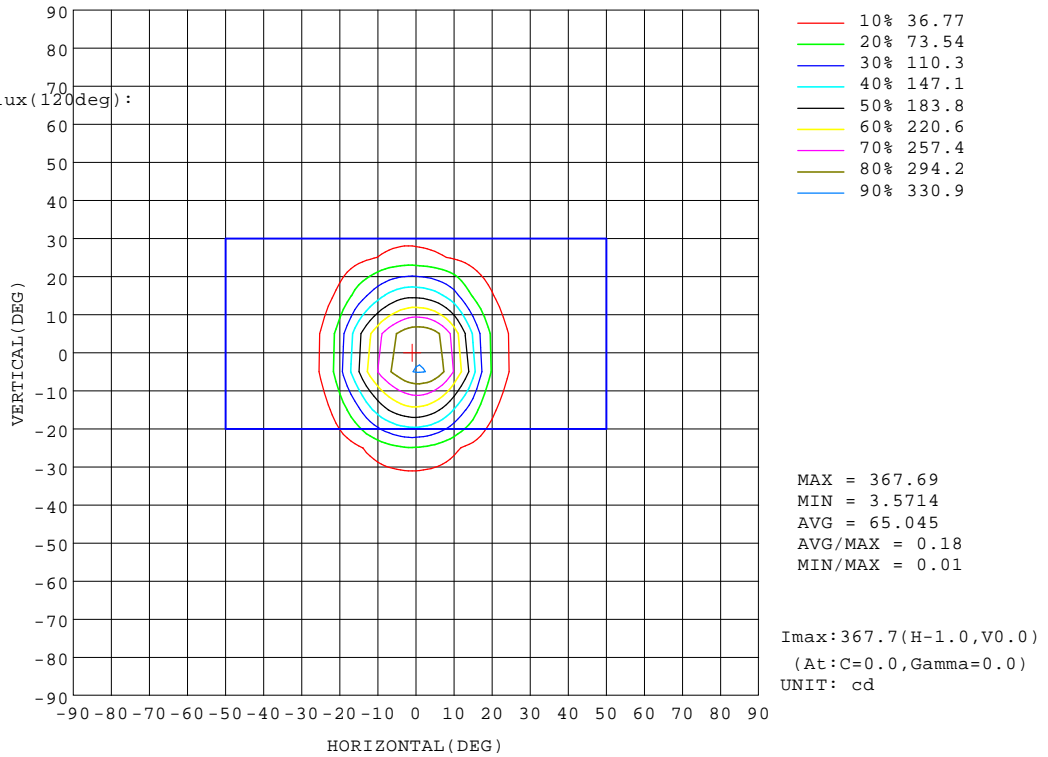
	TYPE:Emergency light	WEIGHT:
SPEC.:2W LED	DIM.:	SERIAL No.:20140103
	SUR.:	PROTECTION ANGLE:

Conical surface Flux(90deg):

113.42 lm
%lum = 91.1%
%lamp = 91.1%

Conical surface Flux(120deg):

119.93 lm
%lum = 96.3%
%lamp = 96.3%

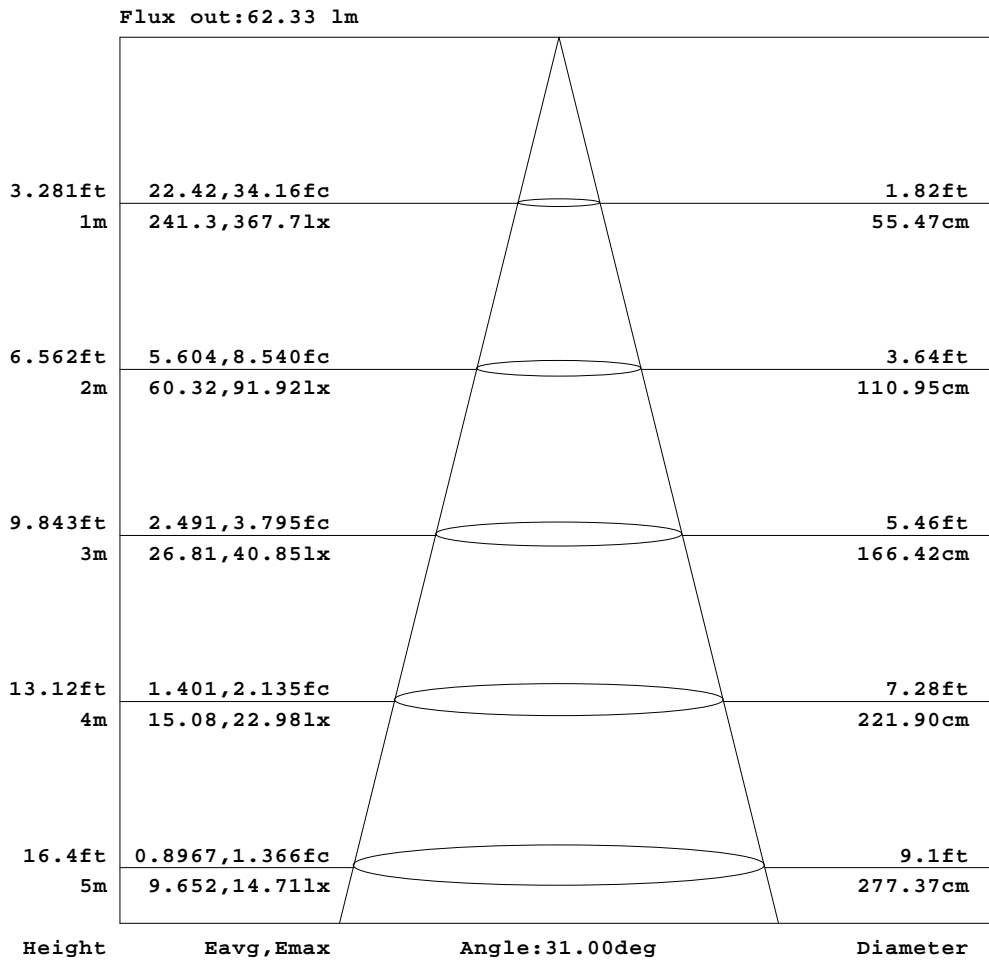


C Range: 0 - 360DEG
C Interval: 5.0DEG
Test Speed: HIGH
Temperature: 25.3DEG
Operators: Harris Chen
Test Date: 2014-01-03

g Range: 0 - 90DEG
g Interval: 0.5DEG
Test System: EVERFINE GO-2000H_V1 SYSTEM V2.0.287
Humidity: 65.0%
Test Distance: 13.450m [K=1.0000]
Remarks:

AAI Figure

	TYPE:Emergency light	WEIGHT:
SPEC.:2W LED	DIM.:	SERIAL No.:20140103
	SUR.:	PROTECTION ANGLE:



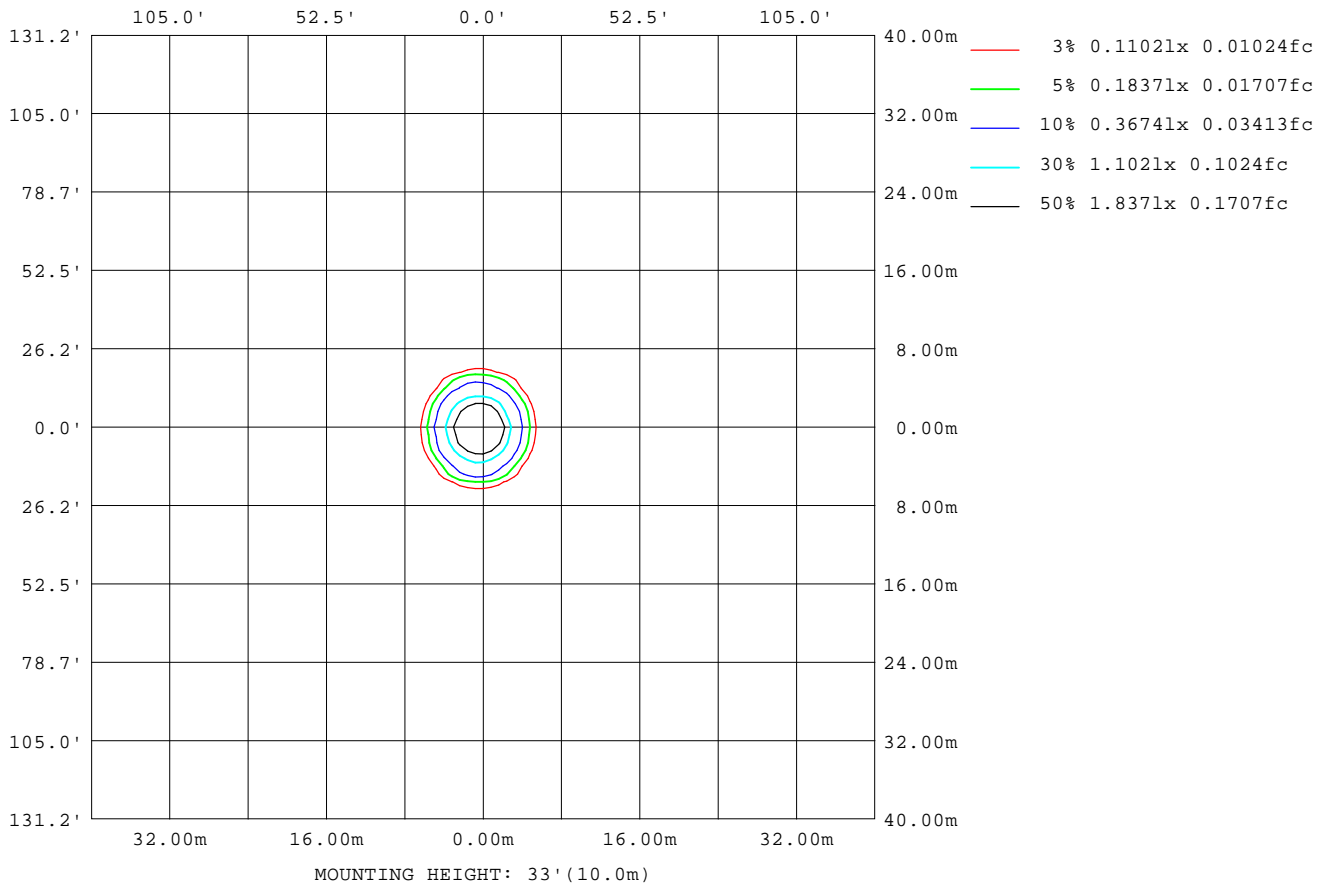
Note:The Curves indicate the illuminated area and the average illumination when the luminaire is at different distance.

C Range: 0 - 360DEG
 C Interval: 5.0DEG
 Test Speed: HIGH
 Temperature:25.3DEG
 Operators:Harris Chen
 Test Date:2014-01-03

g Range: 0 - 90DEG
 g Interval: 0.5DEG
 Test System:EVERFINE GO-2000H_V1 SYSTEM V2.0.287
 Humidity:65.0%
 Test Distance:13.450m [K=1.0000]
 Remarks:

ISOLUX DIAGRAM

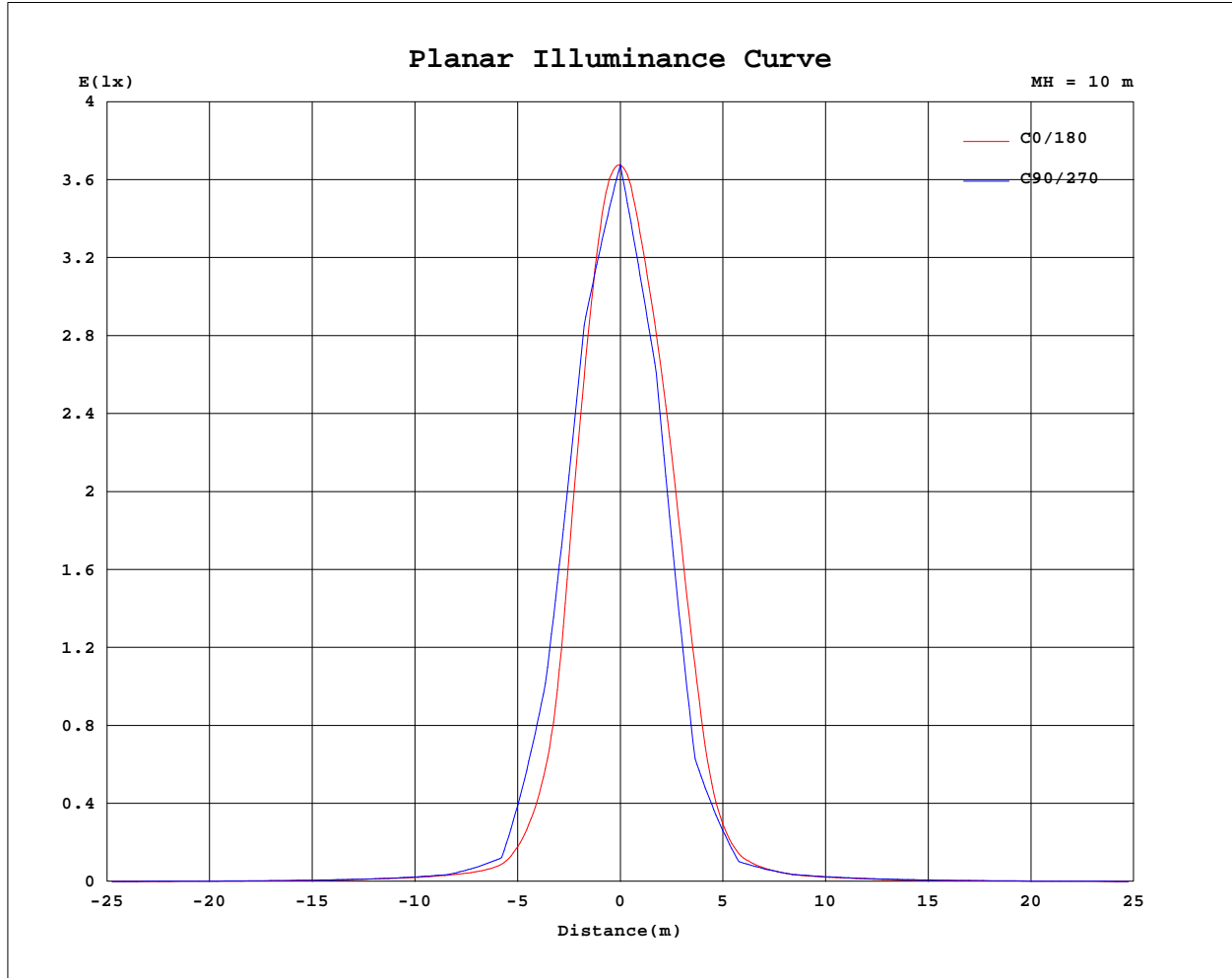
	TYPE:Emergency light	WEIGHT:
SPEC.:2W LED	DIM.:	SERIAL No.:20140103
	SUR.:	PROTECTION ANGLE:



C Range: 0 - 360DEG
 C Interval: 5.0DEG
 Test Speed: HIGH
 Temperature:25.3DEG
 Operators:Harris Chen
 Test Date:2014-01-03

g Range: 0 - 90DEG
 g Interval: 0.5DEG
 Test System:EVERFINE GO-2000H_V1 SYSTEM V2.0.287
 Humidity:65.0%
 Test Distance:13.450m [K=1.0000]
 Remarks:

Planar Illuminance Curve



C Range: 0 - 360DEG
C Interval: 5.0DEG
Test Speed: HIGH
Temperature:25.3DEG
Operators:Harris Chen
Test Date:2014-01-03

g Range: 0 - 90DEG
g Interval: 0.5DEG
Test System:EVERFINE GO-2000H_V1 SYSTEM V2.0.287
Humidity:65.0%
Test Distance:13.450m [K=1.0000]
Remarks:

LUMINOUS DISTRIBUTION INTENSITY DATA

	TYPE:Emergency light	WEIGHT:
SPEC.:2W LED	DIM.:	SERIAL No.:20140103
	SUR.:	PROTECTION ANGLE:

Table--1

UNIT: cd

C(DEG)\g (DEG)	0	5	10	15	20	25	30	35	40	45	50	55	60	65	70	75	80	85	90
0	368	368	368	368	368	368	368	368	368	368	368	368	368	368	368	368	368	368	368
5	347	344	341	339	337	335	334	334	333	333	332	332	332	332	332	333	333	333	333
10	271	265	262	259	258	259	260	263	266	270	274	278	283	286	290	293	295	297	299
15	158	154	153	154	157	162	168	175	182	186	188	191	195	198	201	203	206	208	211
20	70.0	67.9	67.2	67.8	69.8	72.9	78.3	83.1	89.2	95.1	97.9	99.0	100	103	106	110	114	118	123
25	32.6	31.4	31.2	31.8	33.3	34.5	35.3	36.3	37.2	38.1	37.9	40.1	43.8	48.1	54.0	59.5	64.2	67.8	70.8
30	13.8	13.6	13.7	14.1	14.4	15.1	15.9	15.9	15.4	17.4	19.4	21.1	22.3	22.8	22.7	22.1	20.6	19.3	18.9
35	9.25	9.10	9.09	9.19	9.10	9.08	9.09	9.29	9.76	10.2	10.5	10.3	10.8	11.5	12.1	12.6	12.9	13.2	13.5
40	7.41	7.20	7.09	7.01	6.94	6.90	6.90	7.00	7.16	7.20	7.56	7.97	8.35	8.63	8.55	8.36	8.22	8.11	8.09
45	6.11	5.97	5.88	5.82	5.77	5.71	5.66	5.63	5.91	6.09	6.23	6.39	6.69	6.82	6.80	6.68	6.74	6.83	6.85
50	5.22	5.12	5.09	5.08	5.03	4.92	4.95	4.94	5.23	5.46	5.30	5.44	5.67	5.83	5.73	5.58	5.58	5.64	5.62
55	4.11	4.03	4.04	4.08	3.92	3.88	3.93	4.08	4.27	4.39	4.43	4.58	4.77	4.83	4.71	4.63	4.66	4.69	4.67
60	3.11	3.04	3.04	2.99	2.89	2.91	2.96	3.05	3.15	3.28	3.46	3.61	3.77	3.78	3.69	3.68	3.76	3.74	3.72
65	2.27	2.18	2.27	2.15	2.21	2.21	2.17	2.26	2.34	2.48	2.59	2.66	2.83	2.86	2.80	2.82	2.87	2.90	2.90
70	1.60	1.54	1.56	1.54	1.52	1.46	1.51	1.63	1.69	1.77	1.86	1.91	2.00	2.00	1.98	2.00	1.99	2.05	2.07
75	1.00	1.02	0.94	0.98	0.91	0.97	0.99	1.03	1.04	1.08	1.22	1.27	1.34	1.34	1.38	1.41	1.43	1.46	1.46
80	0.52	0.47	0.50	0.51	0.53	0.48	0.47	0.54	0.61	0.67	0.74	0.78	0.79	0.81	0.85	0.86	0.88	0.86	0.86
85	0.20	0.16	0.18	0.12	0.20	0.23	0.25	0.23	0.21	0.19	0.17	0.13	0.10	0.07	0.05	0.03	0.01	0.00	0.00
90	0.05	0.00	0.00	0.00	0.00	0.00	0.00	0.00	0.00	0.00	0.00	0.00	0.00	0.00	0.00	0.00	0.00	0.00	0.00

C Range: 0 - 360DEG
 C Interval: 5.0DEG
 Test Speed: HIGH
 Temperature:25.3DEG
 Operators:Harris Chen
 Test Date:2014-01-03

g Range: 0 - 90DEG
 g Interval: 0.5DEG
 Test System:EVERFINE GO-2000H_V1 SYSTEM V2.0.287
 Humidity:65.0%
 Test Distance:13.450m [K=1.0000]
 Remarks:

LUMINOUS DISTRIBUTION INTENSITY DATA

	TYPE:Emergency light	WEIGHT:
SPEC.:2W LED	DIM.:	SERIAL No.:20140103
	SUR.:	PROTECTION ANGLE:

Table--4

UNIT: cd

C(DEG) g (DEG)	285	290	295	300	305	310	315	320	325	330	335	340	345	350	355				
0	368	368	368	368	368	368	368	368	368	368	368	368	368	368	368				
5	320	320	320	321	321	322	323	324	326	327	329	332	335	339	342				
10	267	264	261	258	255	253	250	248	247	247	248	249	252	257	263				
15	171	170	169	168	166	163	156	149	143	140	140	140	142	145	151				
20	76.1	78.7	81.3	82.6	81.1	77.7	74.1	70.9	69.2	68.1	66.8	65.5	65.0	65.5	67.1				
25	41.5	40.0	38.6	36.9	35.0	33.6	34.2	33.9	33.4	32.9	32.5	31.7	30.8	30.6	31.1				
30	17.7	18.8	19.5	19.8	19.3	18.0	16.1	14.3	15.2	15.4	14.7	14.0	13.7	13.5	13.5				
35	11.5	11.1	10.6	10.3	10.1	10.4	10.2	9.83	9.50	9.39	9.39	9.34	9.29	9.17	9.15				
40	8.72	8.68	8.61	8.41	8.23	8.00	7.72	7.62	7.55	7.56	7.56	7.40	7.50	7.50	7.39				
45	7.24	7.18	7.06	6.93	6.86	6.71	6.44	6.28	6.27	6.21	6.16	6.22	6.10	6.11	6.08				
50	6.03	5.98	5.87	5.75	5.69	5.47	5.30	5.29	5.22	5.11	5.12	5.08	5.10	5.13	5.15				
55	4.98	4.89	4.78	4.66	4.53	4.37	4.30	4.30	4.18	4.13	4.05	4.01	4.04	4.03	4.03				
60	3.96	3.89	3.82	3.74	3.62	3.48	3.29	3.26	3.20	3.26	3.12	3.06	3.09	3.11	3.04				
65	3.06	2.99	2.95	2.88	2.80	2.72	2.57	2.46	2.33	2.34	2.32	2.28	2.22	2.31	2.23				
70	2.19	2.16	2.13	2.04	2.00	1.96	1.85	1.86	1.77	1.67	1.55	1.57	1.57	1.56	1.56				
75	1.52	1.49	1.43	1.39	1.30	1.23	1.16	1.17	1.16	1.15	1.08	0.98	1.02	0.94	0.99				
80	0.88	0.87	0.85	0.85	0.82	0.80	0.76	0.71	0.66	0.59	0.59	0.59	0.53	0.49	0.46				
85	0.03	0.05	0.08	0.11	0.14	0.18	0.23	0.27	0.32	0.39	0.37	0.31	0.25	0.25	0.18				
90	0.00	0.00	0.00	0.00	0.00	0.00	0.00	0.00	0.00	0.00	0.00	0.00	0.00	0.00	0.00				

C Range: 0 - 360DEG
 C Interval: 5.0DEG
 Test Speed: HIGH
 Temperature:25.3DEG
 Operators:Harris Chen
 Test Date:2014-01-03

g Range: 0 - 90DEG
 g Interval: 0.5DEG
 Test System:EVERFINE GO-2000H_V1 SYSTEM V2.0.287
 Humidity:65.0%
 Test Distance:13.450m [K=1.0000]
 Remarks: