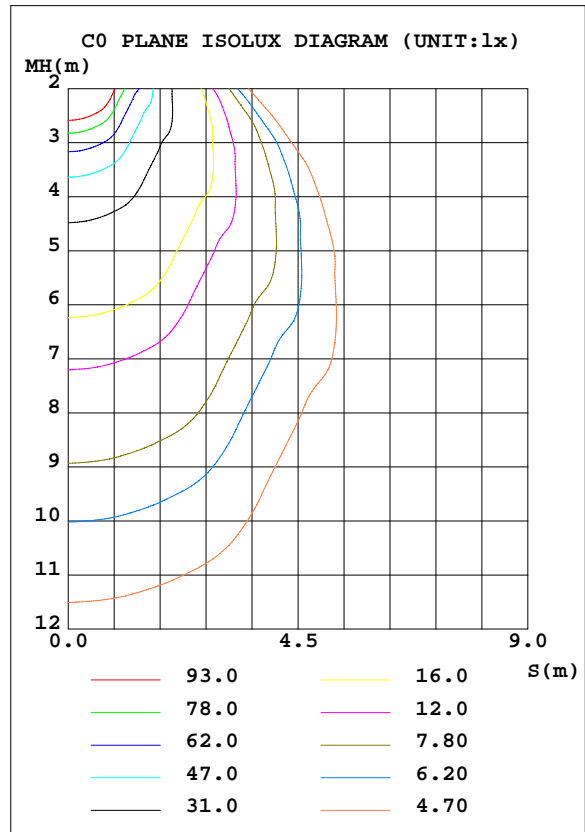
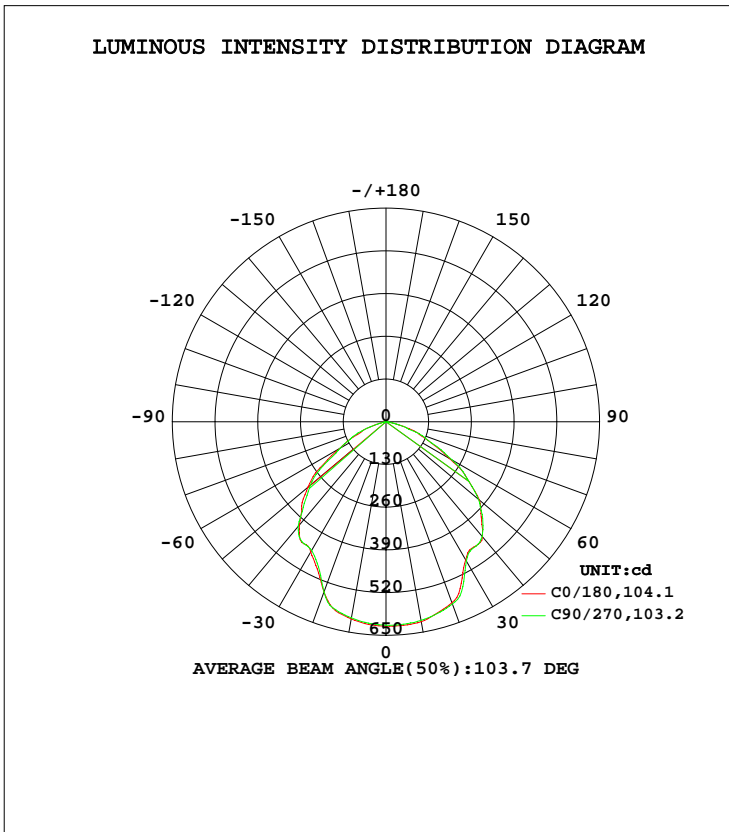


LUMINAIRE PHOTOMETRIC TEST REPORT

Test:U:120.0V I:0.1738A P:20.26W PF:0.9713 Lamp Flux:1486.4x1 lm		
NAME: 4415	TYPE:N/A	WEIGHT:N/A
SPEC.:N/A	DIM.: N/A	SERIAL No.:N/A
MFR.:	SUR.:N/A	Shielding Angle:N/A

DATA OF LAMP		PHOTOMETRIC DATA Eff: 73.37 lm/W			
MODEL	RSZ160325503-10	I <sub>max</sub> (cd)	622.5	S/MH(C0/180)	1.17
NOMINAL POWER(W)	21	LOR(%)	100.0	S/MH(C90/270)	1.18
RATED VOLTAGE(V)	120	TOTAL FLUX(lm)	1486.4	η UP, DN(C0-180)	0.1,46.9
NOMINAL FLUX(lm)	1486.4	CIE CLASS	DIRECT	η UP, DN(C180-360)	0.0,53.0
LAMPS INSIDE	1	η up(%)	0.1	CIBSE SHR NOM	1.25
TEST VOLTAGE(V)	120	η down(%)	99.9	CIBSE SHR MAX	1.35



C Range: 0 - 360DEG  
 C Interval: 22.5DEG  
 Test Speed: 10.0deg/s  
 Temperature:25.3DEG  
 Operators:Hexy  
 Test Date:2016-06-03

γ Range: 0 - 180DEG  
 γ Interval: 1.0DEG  
 Test System:EVERFINE GO-R5000\_V2 SYSTEM V2.0.351  
 Humidity:47%  
 Test Distance:2.437m [K=1.0000]  
 Remarks:

ZONAL FLUX DIAGRAM

ZONAL FLUX DIAGRAM:

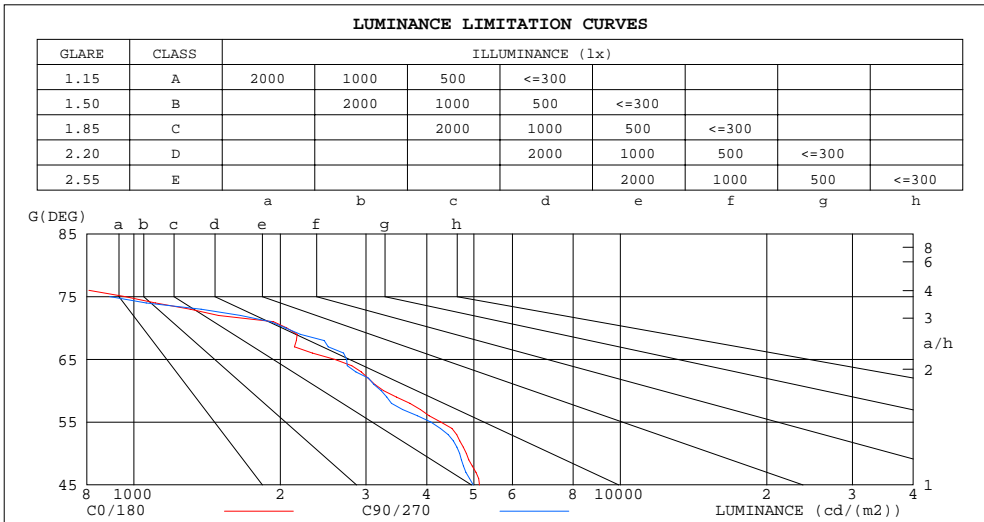
γ	C0	C45	C90	C135	C180	C225	C270	C315	γ	Φ zone	Φ total	lum, lamp
10	609.4	608.0	605.9	606.9	617.6	617.3	613.8	609.3	0- 10	58.74	58.74	3.95,3.95
20	551.5	537.5	551.5	569.5	586.5	589.6	590.4	579.3	10- 20	168.2	226.9	15.3,15.3
30	457.7	454.1	452.2	460.1	485.6	490.3	489.7	470.8	20- 30	238.1	465.0	31.3,31.3
40	409.9	416.8	416.0	420.1	457.1	460.3	455.3	428.1	30- 40	284.5	749.5	50.4,50.4
50	310.2	297.3	300.4	314.3	371.0	374.5	367.9	341.7	40- 50	296.4	1046	70.4,70.4
60	163.0	172.8	161.2	183.2	221.8	264.7	232.0	202.2	50- 60	243.5	1289	86.7,86.7
70	70.50	76.88	70.08	71.23	107.8	109.3	107.7	97.06	60- 70	148.0	1437	96.7,96.7
80	5.692	4.686	4.749	5.929	14.13	17.87	14.30	10.37	70- 80	44.65	1482	99.7,99.7
90	0.0554	0.0597	0.0551	0.0409	0.2161	0.3799	0.2934	0.0382	80- 90	3.004	1485	99.9,99.9
100	0.1226	0.1265	0.1227	0.0987	0.0485	0.0427	0.0442	0.0461	90-100	0.0707	1485	99.9,99.9
110	0.1593	0.1662	0.1646	0.1426	0.0868	0.0794	0.0810	0.0837	100-110	0.1078	1485	99.9,99.9
120	0.1811	0.1812	0.1824	0.1656	0.1420	0.1309	0.1343	0.1330	110-120	0.1344	1485	99.9,99.9
130	0.2463	0.2449	0.2522	0.2316	0.2160	0.1972	0.1968	0.1945	120-130	0.1646	1485	99.9,99.9
140	0.3722	0.3866	0.3959	0.3756	0.3098	0.2887	0.2854	0.2827	130-140	0.2112	1486	100,100
150	0.5510	0.5958	0.6061	0.5852	0.3769	0.3617	0.3785	0.3605	140-150	0.2543	1486	100,100
160	0.6969	0.6962	0.6941	0.7202	0.4424	0.4224	0.4427	0.4121	150-160	0.2434	1486	100,100
170	0.6410	0.6268	0.6293	0.6540	0.4676	0.4341	0.4456	0.4393	160-170	0.1601	1486	100,100
180	0.5504	0.5180	0.5159	0.5515	0.5635	0.5335	0.5086	0.5281	170-180	0.0512	1486	100,100
DEG	LUMINOUS INTENSITY:cd Less than 25% Percent = 6.3 %									UNIT:lm		

C Range: 0 - 360DEG  
 C Interval: 22.5DEG  
 Test Speed: 10.0deg/s  
 Temperature:25.3DEG  
 Operators:Hexy  
 Test Date:2016-06-03

γ Range: 0 - 180DEG  
 γ Interval: 1.0DEG  
 Test System:EVERFINE GO-R5000\_V2 SYSTEM V2.0.351  
 Humidity:47%  
 Test Distance:2.437m [K=1.0000]  
 Remarks:

LUMINANCE LIMITATION CURVES

Test:U:120.0V I:0.1738A P:20.26W PF:0.9713 Lamp Flux:1486.4x1 lm		
NAME:	TYPE:N/A	WEIGHT:N/A
SPEC.:N/A	DIM.: N/A	SERIAL No.:N/A
MFR.:	SUR.:N/A	Shielding Angle:N/A



LUMINANCE cd/(m2)		
G(DEG)	C0/180	C90/270
85	113	98
80	328	273
75	957	892
70	2061	2049
65	2585	2737
60	3260	3225
55	4273	4078
50	4826	4673
45	5135	4983

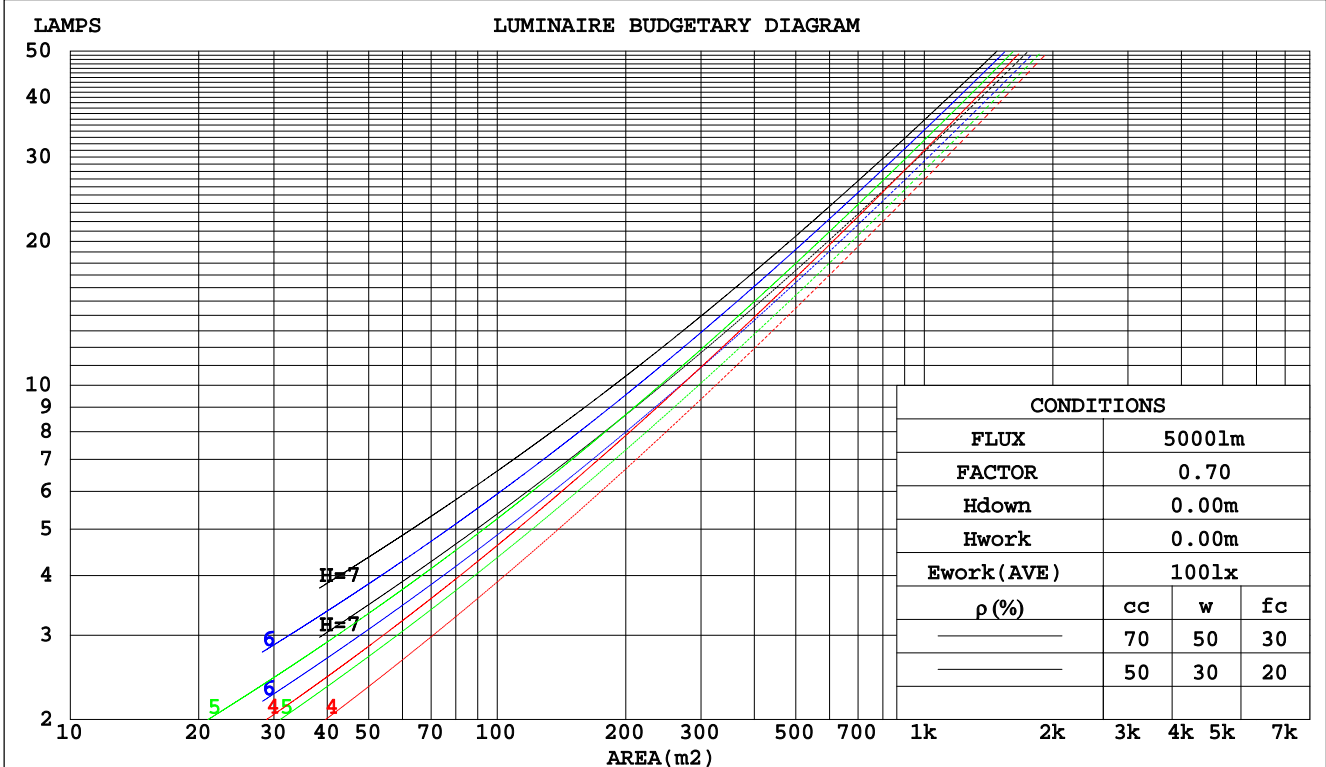
C Range: 0 - 360DEG  
 C Interval: 22.5DEG  
 Test Speed: 10.0deg/s  
 Temperature:25.3DEG  
 Operators:Hexy  
 Test Date:2016-06-03

γ Range: 0 - 180DEG  
 γ Interval: 1.0DEG  
 Test System:EVERFINE GO-R5000\_V2 SYSTEM V2.0.351  
 Humidity:47%  
 Test Distance:2.437m [K=1.0000]  
 Remarks:

CU AND LUMINAIRE BUDGETARY ESTIMATE DIAGRAM

Test:U:120.0V I:0.1738A P:20.26W PF:0.9713 Lamp Flux:1486.4x1 lm		
NAME:	TYPE:N/A	WEIGHT:N/A
SPEC.:N/A	DIM.: N/A	SERIAL No.:N/A
MFR.:	SUR.:N/A	Shielding Angle:N/A

pcc	80%			70%			50%			30%			10%			0
	50%	30%	10%	50%	30%	10%	50%	30%	10%	50%	30%	10%	50%	30%	10%	0
pw																0
pfc	20%			20%			20%			20%			20%			0
RCR	RCR:Room Cavity Ratio      Coefficients of Utilization(CU)															
0.0	1.19	1.19	1.19	1.16	1.16	1.16	1.11	1.11	1.11	1.06	1.06	1.06	1.02	1.02	1.02	.00
1.0	1.06	1.03	.99	1.04	1.01	.98	.90	.97	.94	.96	.94	.92	.92	.91	.89	.87
2.0	.94	.88	.83	.92	.86	.82	.88	.84	.80	.85	.81	.78	.82	.79	.76	.74
3.0	.83	.76	.70	.82	.75	.69	.79	.73	.68	.76	.71	.67	.73	.69	.66	.64
4.0	.74	.66	.60	.73	.65	.59	.70	.64	.58	.68	.62	.58	.66	.61	.57	.55
5.0	.66	.58	.52	.65	.57	.51	.63	.56	.51	.61	.55	.50	.60	.54	.50	.48
6.0	.60	.52	.45	.59	.51	.45	.57	.50	.45	.56	.49	.44	.54	.48	.44	.42
7.0	.55	.46	.40	.54	.46	.40	.52	.45	.40	.51	.44	.40	.49	.44	.39	.37
8.0	.50	.42	.36	.49	.41	.36	.48	.41	.36	.47	.40	.36	.46	.40	.35	.33
9.0	.46	.38	.33	.45	.38	.32	.44	.37	.32	.43	.37	.32	.42	.36	.32	.30
10.0	.42	.35	.30	.42	.34	.30	.41	.34	.29	.40	.34	.29	.39	.33	.29	.27



C Range: 0 - 360DEG  
 C Interval: 22.5DEG  
 Test Speed: 10.0deg/s  
 Temperature:25.3DEG  
 Operators:Hexy  
 Test Date:2016-06-03

γ Range: 0 - 180DEG  
 γ Interval: 1.0DEG  
 Test System:EVERFINE GO-R5000\_V2 SYSTEM V2.0.351  
 Humidity:47%  
 Test Distance:2.437m [K=1.0000]  
 Remarks:

WEC AND CCEC

Test:U:120.0V I:0.1738A P:20.26W PF:0.9713 Lamp Flux:1486.4x1 lm		
NAME:	TYPE:N/A	WEIGHT:N/A
SPEC.:N/A	DIM.: N/A	SERIAL No.:N/A
MFR.:	SUR.:N/A	Shielding Angle:N/A

ρcc	80%			70%			50%			30%			10%			0
ρw	50%	30%	10%	50%	30%	10%	50%	30%	10%	50%	30%	10%	50%	30%	10%	0
ρfc	20%			20%			20%			20%			20%			0
RCR	RCR:Room Cavity Ratio						Wall Exitance Coefficients(WEC)									
0.0																
1.0	.265	.151	.048	.258	.147	.047	.245	.141	.045	.233	.134	.043	.222	.129	.041	
2.0	.259	.142	.044	.253	.139	.043	.242	.134	.042	.231	.130	.041	.221	.125	.039	
3.0	.246	.131	.039	.240	.129	.039	.230	.125	.038	.221	.121	.037	.212	.117	.036	
4.0	.231	.120	.035	.226	.118	.035	.217	.115	.034	.209	.112	.034	.201	.109	.033	
5.0	.216	.110	.032	.212	.109	.032	.204	.106	.031	.196	.104	.031	.189	.101	.030	
6.0	.202	.101	.029	.198	.100	.029	.191	.098	.029	.185	.096	.028	.178	.094	.028	
7.0	.189	.094	.027	.186	.093	.026	.180	.091	.026	.174	.089	.026	.168	.087	.026	
8.0	.178	.087	.024	.175	.086	.024	.169	.085	.024	.164	.083	.024	.159	.082	.024	
9.0	.168	.081	.023	.165	.080	.023	.160	.079	.022	.155	.078	.022	.150	.076	.022	
10.0	.158	.076	.021	.156	.075	.021	.151	.074	.021	.147	.073	.021	.143	.072	.021	

ρcc	80%			70%			50%			30%			10%			0
ρw	50%	30%	10%	50%	30%	10%	50%	30%	10%	50%	30%	10%	50%	30%	10%	0
ρfc	20%			20%			20%			20%			20%			0
RCR	RCR:Room Cavity Ratio						Ceiling Cavity Exitance Coefficients(CCEC)									
0.0	.191	.191	.191	.163	.163	.163	.112	.112	.112	.064	.064	.064	.020	.020	.020	
1.0	.178	.157	.139	.152	.135	.119	.104	.093	.083	.060	.054	.048	.019	.017	.016	
2.0	.169	.133	.103	.144	.114	.089	.099	.079	.062	.057	.046	.036	.018	.015	.012	
3.0	.161	.115	.078	.138	.099	.068	.094	.069	.048	.055	.040	.028	.018	.013	.009	
4.0	.153	.101	.062	.131	.088	.054	.090	.061	.038	.052	.036	.022	.017	.012	.007	
5.0	.146	.091	.050	.125	.079	.044	.086	.055	.031	.050	.032	.018	.016	.011	.006	
6.0	.139	.082	.042	.120	.071	.036	.082	.050	.026	.048	.029	.015	.015	.010	.005	
7.0	.133	.075	.035	.114	.065	.031	.079	.046	.022	.046	.027	.013	.015	.009	.004	
8.0	.126	.070	.030	.109	.060	.027	.075	.042	.019	.044	.025	.011	.014	.008	.004	
9.0	.121	.065	.027	.104	.056	.023	.072	.039	.017	.042	.023	.010	.014	.008	.003	
10.0	.115	.060	.024	.099	.052	.021	.069	.037	.015	.040	.022	.009	.013	.007	.003	

C Range: 0 - 360DEG  
 C Interval: 22.5DEG  
 Test Speed: 10.0deg/s  
 Temperature:25.3DEG  
 Operators:Hexy  
 Test Date:2016-06-03

γ Range: 0 - 180DEG  
 γ Interval: 1.0DEG  
 Test System:EVERFINE GO-R5000\_V2 SYSTEM V2.0.351  
 Humidity:47%  
 Test Distance:2.437m [K=1.0000]  
 Remarks:

UGR(Unified Glare Rating) Table

Test:U:120.0V I:0.1738A P:20.26W PF:0.9713 Lamp Flux:1486.4x1 lm										
NAME:				TYPE:N/A				WEIGHT:N/A		
SPEC.:N/A				DIM.: N/A				SERIAL No.:N/A		
MFR.:				SUR.:N/A				Shielding Angle:N/A		
ceiling/cavity	0.7	0.7	0.5	0.5	0.3	0.7	0.7	0.5	0.5	0.3
walls	0.5	0.3	0.5	0.3	0.3	0.5	0.3	0.5	0.3	0.3
working plane	0.2	0.2	0.2	0.2	0.2	0.2	0.2	0.2	0.2	0.2
Room dimensions	Viewed crosswise					Viewed endwise				
x = 2H y = 2H	17.4	18.8	17.6	19.0	19.2	17.5	18.9	17.8	19.1	19.3
3H	18.0	19.3	18.3	19.5	19.7	18.1	19.4	18.4	19.7	19.9
4H	18.0	19.2	18.3	19.5	19.7	18.1	19.4	18.4	19.6	19.9
6H	17.9	19.1	18.2	19.3	19.6	18.0	19.2	18.3	19.5	19.7
8H	17.8	19.0	18.2	19.2	19.5	18.0	19.1	18.3	19.4	19.7
12H	17.8	18.9	18.1	19.2	19.5	17.9	19.0	18.3	19.3	19.6
4H 2H	17.7	19.0	18.0	19.2	19.5	17.8	19.1	18.1	19.3	19.6
3H	18.4	19.5	18.8	19.8	20.1	18.5	19.6	18.9	19.9	20.2
4H	18.4	19.4	18.8	19.7	20.1	18.5	19.5	18.9	19.8	20.2
6H	18.4	19.2	18.8	19.6	19.9	18.5	19.3	18.9	19.7	20.0
8H	18.3	19.1	18.7	19.5	19.9	18.4	19.2	18.8	19.6	20.0
12H	18.3	19.0	18.7	19.4	19.8	18.4	19.1	18.8	19.5	19.9
8H 4H	18.4	19.2	18.8	19.5	19.9	18.5	19.3	18.9	19.6	20.0
6H	18.3	19.0	18.8	19.4	19.8	18.4	19.1	18.9	19.5	19.9
8H	18.3	18.8	18.7	19.3	19.7	18.4	18.9	18.8	19.4	19.8
12H	18.2	18.7	18.7	19.2	19.7	18.3	18.8	18.8	19.3	19.7
12H 4H	18.3	19.1	18.8	19.4	19.8	18.4	19.2	18.9	19.5	19.9
6H	18.3	18.8	18.7	19.3	19.7	18.4	18.9	18.8	19.4	19.8
8H	18.2	18.7	18.7	19.2	19.7	18.3	18.8	18.8	19.3	19.7
Variations with the observer position at spacings:										
S = 1.0H	+ 0.4 / - 0.6					+ 0.5 / - 0.8				
1.5H	+ 0.3 / - 0.9					+ 0.6 / - 0.7				
2.0H	+ 1.1 / - 1.3					+ 0.9 / - 1.4				

CIE Pub.117 Corrected 1486 lm Total Lamp Luminous Flux.(8log(F/F0) = 1.4)

C Range: 0 - 360DEG  
 C Interval: 22.5DEG  
 Test Speed: 10.0deg/s  
 Temperature:25.3DEG  
 Operators:Hexy  
 Test Date:2016-06-03

γ Range: 0 - 180DEG  
 γ Interval: 1.0DEG  
 Test System:EVERFINE GO-R5000\_V2 SYSTEM V2.0.351  
 Humidity:47%  
 Test Distance:2.437m [K=1.0000]  
 Remarks:

**UTILIZATION FACTORS TABLE**

Test:U:120.0V I:0.1738A P:20.26W PF:0.9713 Lamp Flux:1486.4x1 lm		
NAME:	TYPE:N/A	WEIGHT:N/A
SPEC.:N/A	DIM.: N/A	SERIAL No.:N/A
MFR.:	SUR.:N/A	Shielding Angle:N/A

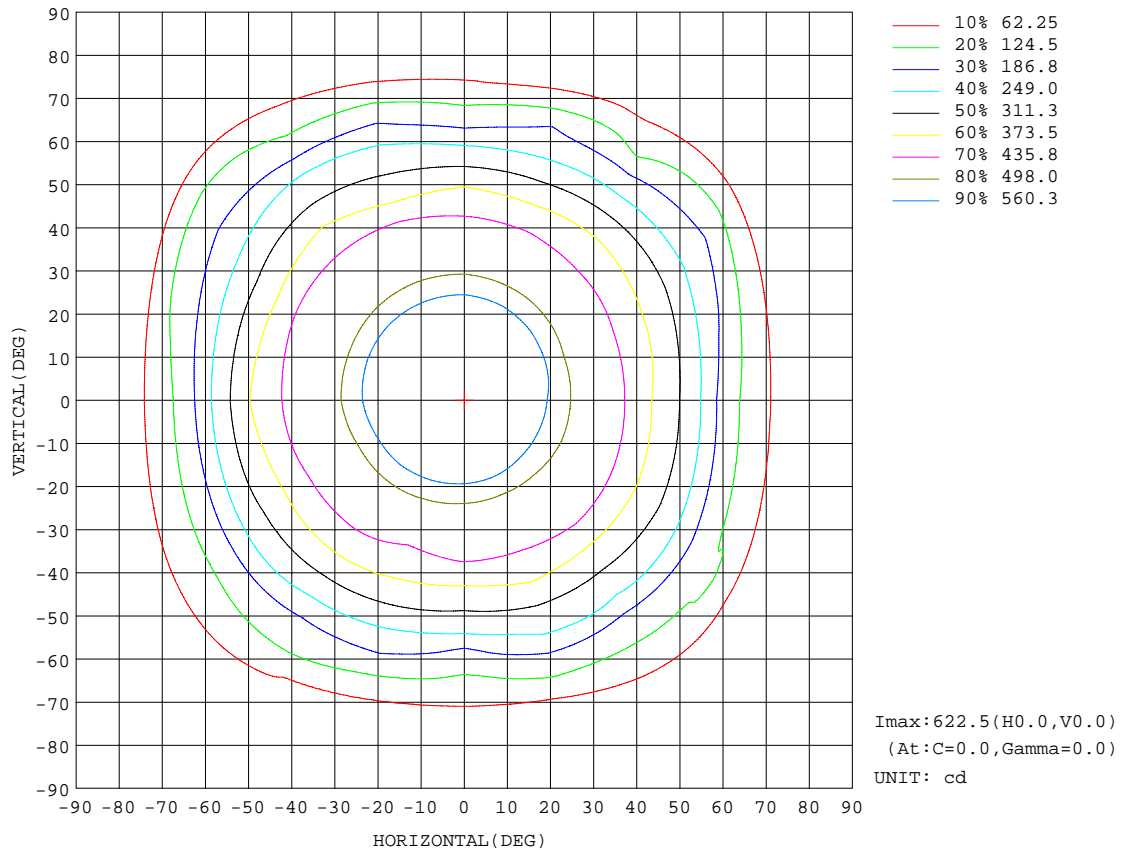
REFLECTANCE										
Ceiling	0.8	0.8	0.8	0.7	0.7	0.7	0.5	0.5	0.5	0
Walls	0.7	0.5	0.3	0.7	0.5	0.3	0.7	0.5	0.3	0
Working plane	0.2	0.2	0.2	0.2	0.2	0.2	0.2	0.2	0.2	0
ROOM INDEX	UTILIZATION FACTORS(PERCENT) $k(RI) \times RCR = 5$									
k = 0.60	60	49	43	60	49	42	59	49	42	36
0.80	71	60	53	70	60	53	68	59	52	46
1.00	80	69	63	78	69	62	76	70	62	55
1.25	87	77	71	85	77	70	83	75	70	63
1.50	92	83	76	90	82	76	87	80	75	68
2.00	98	91	85	96	89	84	93	87	83	75
2.50	102	95	89	100	93	89	96	91	87	79
3.00	105	99	94	103	97	93	99	94	91	83
4.00	108	103	99	106	102	98	102	98	95	87
5.00	110	106	103	108	104	101	104	101	98	89
ROOM INDEX	UF(total)									Direct
According to DIN EN 13032-2 2004			Suspended				SHRNM = 1.25			

C Range: 0 - 360DEG  
 C Interval: 22.5DEG  
 Test Speed: 10.0deg/s  
 Temperature:25.3DEG  
 Operators:Hexy  
 Test Date:2016-06-03

$\gamma$  Range: 0 - 180DEG  
 $\gamma$  Interval: 1.0DEG  
 Test System:EVERFINE GO-R5000\_V2 SYSTEM V2.0.351  
 Humidity:47%  
 Test Distance:2.437m [K=1.0000]  
 Remarks:

ISOCANDELA DIAGRAM

Test:U:120.0V I:0.1738A P:20.26W PF:0.9713 Lamp Flux:1486.4x1 lm		
NAME:	TYPE:N/A	WEIGHT:N/A
SPEC.:N/A	DIM.: N/A	SERIAL No.:N/A
MFR.:	SUR.:N/A	Shielding Angle:N/A



C Range: 0 - 360DEG  
 C Interval: 22.5DEG  
 Test Speed: 10.0deg/s  
 Temperature: 25.3DEG  
 Operators: Hexy  
 Test Date: 2016-06-03

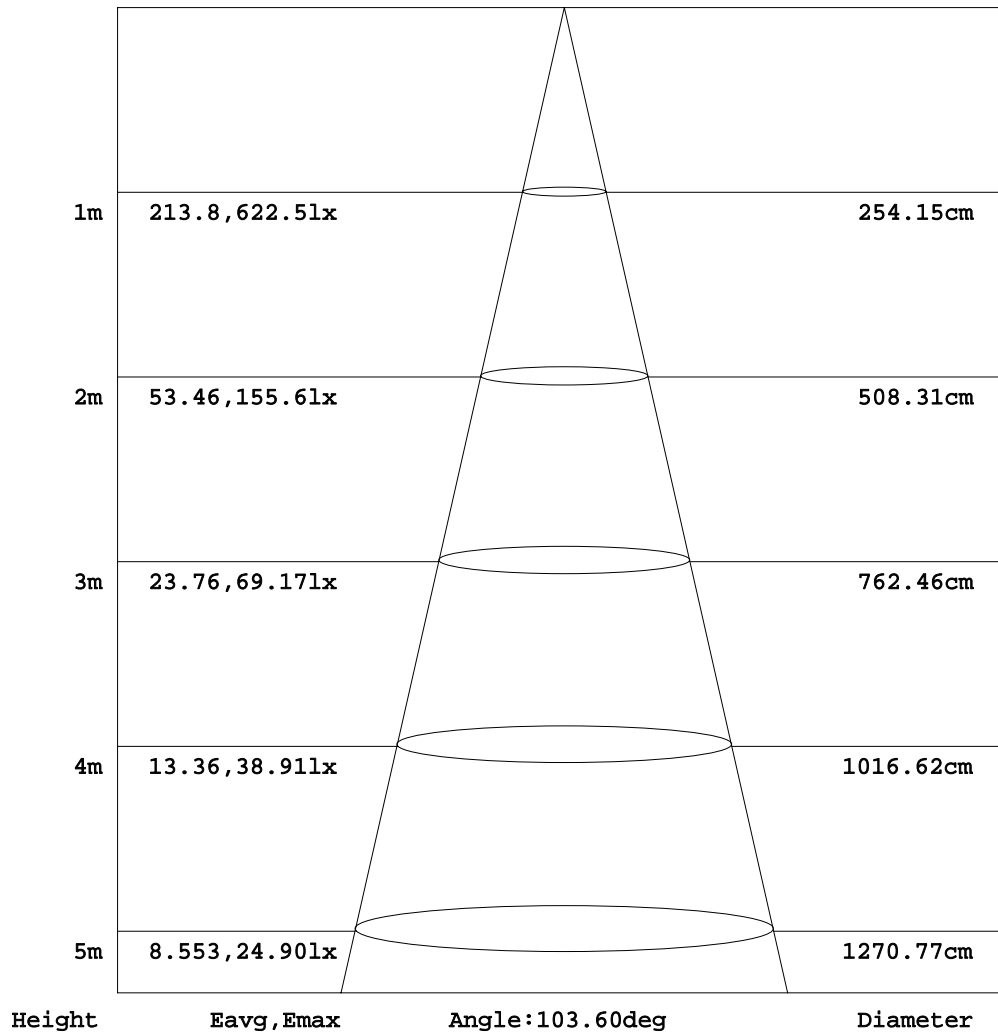
$\gamma$  Range: 0 - 180DEG  
 $\gamma$  Interval: 1.0DEG  
 Test System: EVERFINE GO-R5000\_V2 SYSTEM V2.0.351  
 Humidity: 47%  
 Test Distance: 2.437m [K=1.0000]  
 Remarks:



AAI Figure

Test:U:120.0V I:0.1738A P:20.26W PF:0.9713 Lamp Flux:1486.4x1 lm		
NAME:	TYPE:N/A	WEIGHT:N/A
SPEC.:N/A	DIM.: N/A	SERIAL No.:N/A
MFR.:	SUR.:N/A	Shielding Angle:N/A

Flux out:1101 lm



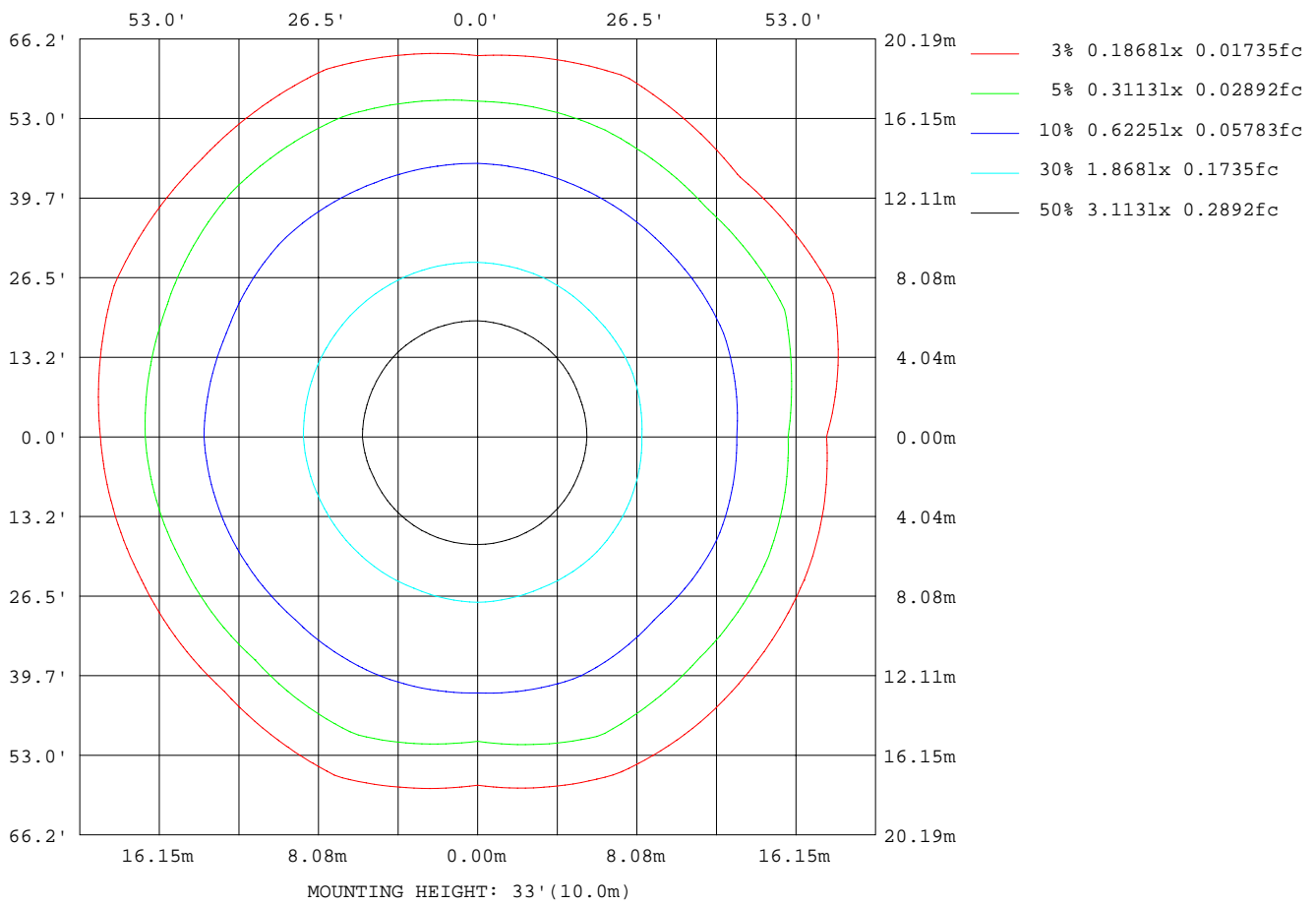
Note:The Curves indicate the illuminated area and the average illumination when the luminaire is at different distance.

C Range: 0 - 360DEG  
 C Interval: 22.5DEG  
 Test Speed: 10.0deg/s  
 Temperature:25.3DEG  
 Operators:Hexy  
 Test Date:2016-06-03

γ Range: 0 - 180DEG  
 γ Interval: 1.0DEG  
 Test System:EVERFINE GO-R5000\_V2 SYSTEM V2.0.351  
 Humidity:47%  
 Test Distance:2.437m [K=1.0000]  
 Remarks:

ISOLUX DIAGRAM

Test:U:120.0V I:0.1738A P:20.26W PF:0.9713 Lamp Flux:1486.4x1 lm		
NAME:	TYPE:N/A	WEIGHT:N/A
SPEC.:N/A	DIM.: N/A	SERIAL No.:N/A
MFR.:	SUR.:N/A	Shielding Angle:N/A



C Range: 0 - 360DEG  
 C Interval: 22.5DEG  
 Test Speed: 10.0deg/s  
 Temperature:25.3DEG  
 Operators:Hexy  
 Test Date:2016-06-03

γ Range: 0 - 180DEG  
 γ Interval: 1.0DEG  
 Test System:EVERFINE GO-R5000\_V2 SYSTEM V2.0.351  
 Humidity:47%  
 Test Distance:2.437m [K=1.0000]  
 Remarks:

LED Avg.L Report

Test:U:120.0V I:0.1738A P:20.26W PF:0.9713 Lamp Flux:1486.4x1 lm		
NAME:	TYPE:N/A	WEIGHT:N/A
SPEC.:N/A	DIM.: N/A	SERIAL No.:N/A
MFR.:	SUR.:N/A	Shielding Angle:N/A

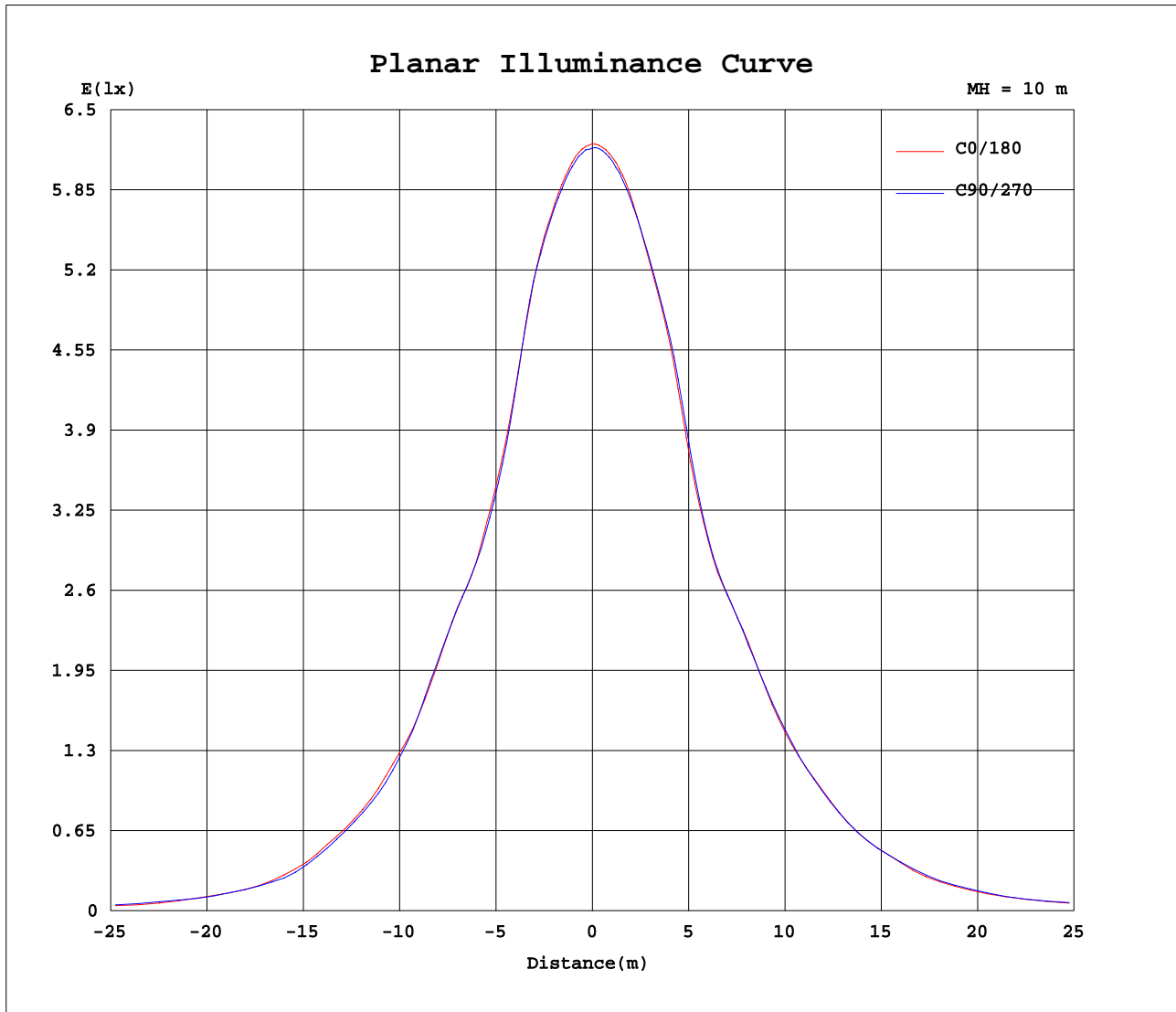
AvgL	cd/m2
L_0~180(65)av	3080
L_0~180(75)av	1514
L_0~180(85)av	235
L_90~270(65)av	3196
L_90~270(75)av	1506
L_90~270(85)av	235
L_45(65)av	3235
L_45(75)av	1394
L_45(85)av	234

Standard: GB/T 29293-2012

C Range: 0 - 360DEG  
 C Interval: 22.5DEG  
 Test Speed: 10.0deg/s  
 Temperature:25.3DEG  
 Operators:Hexy  
 Test Date:2016-06-03

γ Range: 0 - 180DEG  
 γ Interval: 1.0DEG  
 Test System:EVERFINE GO-R5000\_V2 SYSTEM V2.0.351  
 Humidity:47%  
 Test Distance:2.437m [K=1.0000]  
 Remarks:

Planar Illuminance Curve



C Range: 0 - 360DEG  
 C Interval: 22.5DEG  
 Test Speed: 10.0deg/s  
 Temperature: 25.3DEG  
 Operators: Hexy  
 Test Date: 2016-06-03

$\gamma$  Range: 0 - 180DEG  
 $\gamma$  Interval: 1.0DEG  
 Test System: EVERFINE GO-R5000\_V2 SYSTEM V2.0.351  
 Humidity: 47%  
 Test Distance: 2.437m [K=1.0000]  
 Remarks:

LUMINOUS DISTRIBUTION INTENSITY DATA

Test:U:120.0V I:0.1738A P:20.26W PF:0.9713 Lamp Flux:1486.4x1 lm		
NAME:	TYPE:N/A	WEIGHT:N/A
SPEC.:N/A	DIM.: N/A	SERIAL No.:N/A
MFR.:	SUR.:N/A	Shielding Angle:N/A

Table--1

UNIT: cd

C(DEG) γ (DEG)	0	22.5	45	67.5	90	112.5	135	157.5	180	202.5	225	247.5	270	292.5	315	337.5			
0	623	621	621	620	619	618	617	616	623	621	621	620	619	618	617	616			
5	619	617	617	616	615	615	615	615	622	621	621	620	618	618	616	614			
10	609	608	608	608	606	606	607	609	618	618	617	616	614	612	609	607			
15	595	591	592	593	592	592	593	595	603	605	607	607	604	601	598	594			
20	552	545	537	544	552	560	569	575	586	588	590	590	590	587	579	568			
25	495	491	484	483	487	494	505	517	542	550	554	555	554	539	520	499			
30	458	451	454	453	452	456	460	468	486	486	490	493	490	480	471	459			
35	448	444	448	450	446	440	454	459	466	472	470	473	468	463	449	443			
40	410	415	417	409	416	410	420	433	457	460	460	461	455	444	428	425			
45	363	364	349	369	352	359	373	384	410	420	422	423	416	404	395	375			
50	310	313	297	309	300	308	314	330	371	348	375	350	368	343	342	328			
55	245	256	248	260	234	249	251	280	302	298	312	307	301	292	276	280			
60	163	180	173	197	161	194	183	197	222	238	265	264	232	231	202	229			
65	109	127	120	133	116	134	125	140	151	189	178	197	154	189	124	167			
70	70.5	64.6	76.9	66.1	70.1	83.1	71.2	91.3	108	148	109	130	108	110	97.1	101			
75	24.8	22.0	20.4	21.1	23.1	27.1	33.5	42.8	53.6	55.9	54.5	61.6	54.9	41.0	35.9	29.1			
80	5.69	4.68	4.69	4.60	4.75	5.48	5.93	7.55	14.1	15.1	17.9	16.5	14.3	12.4	10.4	7.39			
85	0.98	0.79	0.72	0.74	0.85	1.13	1.60	2.18	3.11	3.51	3.76	3.71	3.25	2.69	2.07	1.66			
90	0.06	0.06	0.06	0.06	0.06	0.05	0.04	0.05	0.22	0.32	0.38	0.38	0.29	0.16	0.04	0.02			
95	0.09	0.09	0.09	0.09	0.09	0.08	0.07	0.07	0.03	0.03	0.03	0.03	0.03	0.03	0.03	0.04			
100	0.12	0.12	0.13	0.13	0.12	0.11	0.10	0.10	0.05	0.04	0.04	0.04	0.04	0.04	0.05	0.05			
105	0.15	0.15	0.16	0.16	0.15	0.14	0.13	0.12	0.07	0.06	0.06	0.06	0.06	0.06	0.06	0.07			
110	0.16	0.16	0.17	0.17	0.16	0.15	0.14	0.13	0.09	0.08	0.08	0.08	0.08	0.08	0.08	0.09			
115	0.16	0.17	0.17	0.17	0.17	0.16	0.15	0.14	0.11	0.10	0.10	0.11	0.11	0.11	0.11	0.11			
120	0.18	0.18	0.18	0.19	0.18	0.17	0.17	0.15	0.14	0.13	0.13	0.13	0.13	0.13	0.13	0.14			
125	0.21	0.21	0.21	0.21	0.21	0.20	0.19	0.18	0.18	0.16	0.16	0.16	0.17	0.16	0.16	0.17			
130	0.25	0.25	0.24	0.25	0.25	0.24	0.23	0.22	0.22	0.19	0.20	0.20	0.20	0.19	0.19	0.20			
135	0.30	0.31	0.30	0.32	0.32	0.31	0.29	0.27	0.26	0.24	0.24	0.24	0.25	0.24	0.24	0.24			
140	0.37	0.37	0.39	0.39	0.40	0.39	0.38	0.34	0.31	0.28	0.29	0.29	0.29	0.29	0.28	0.29			
145	0.46	0.47	0.50	0.50	0.51	0.51	0.48	0.44	0.35	0.32	0.33	0.34	0.34	0.33	0.33	0.33			
150	0.55	0.58	0.60	0.61	0.61	0.61	0.59	0.54	0.38	0.35	0.36	0.37	0.38	0.37	0.36	0.36			
155	0.63	0.67	0.66	0.66	0.67	0.68	0.66	0.63	0.42	0.38	0.40	0.41	0.42	0.41	0.39	0.41			
160	0.70	0.70	0.70	0.72	0.69	0.72	0.72	0.68	0.44	0.42	0.42	0.44	0.44	0.43	0.41	0.44			
165	0.70	0.69	0.68	0.69	0.69	0.71	0.71	0.69	0.45	0.43	0.44	0.45	0.46	0.44	0.43	0.45			
170	0.64	0.63	0.63	0.62	0.63	0.64	0.65	0.65	0.47	0.45	0.43	0.44	0.45	0.43	0.44	0.46			
175	0.63	0.61	0.60	0.59	0.58	0.60	0.63	0.63	0.50	0.49	0.47	0.46	0.46	0.44	0.47	0.48			
180	0.55	0.53	0.52	0.51	0.52	0.52	0.55	0.56	0.56	0.55	0.53	0.52	0.51	0.51	0.53	0.56			

C Range: 0 - 360DEG  
 C Interval: 22.5DEG  
 Test Speed: 10.0deg/s  
 Temperature:25.3DEG  
 Operators:Hexy  
 Test Date:2016-06-03

γ Range: 0 - 180DEG  
 γ Interval: 1.0DEG  
 Test System:EVERFINE GO-R5000\_V2 SYSTEM V2.0.351  
 Humidity:47%  
 Test Distance:2.437m [K=1.0000]  
 Remarks: