

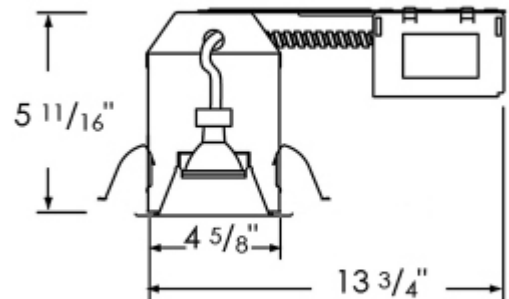
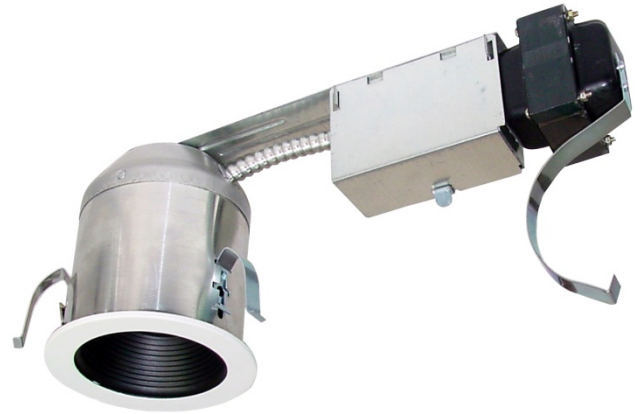


RP









LIGHTING • FANS

Type:
Project:
Comments:
Prepared By:

Part #	8301HRA-E
Description:	4" Airtight Low voltage remodel housing w/ electronic ballast
Design Features	
Thermal Protection	Protected against misuse of insulation and improper wiring
Construction	Remodel construction
J Box	Listed for feed through wiring (4 in-4 out) and six 1/2" knockouts & four non metallic cable knockouts w/ strain clamps
Connectors	3-port quick connectors
Ballast	Electronic
Lamp	MR16
Wattage	50W max
Voltage	12V
Socket	Adjusts up to 30° from horizontal
Listing	
ETL/UL	cULus for damp location
Meets Washington State energy code for restricted airflow	



Trim Options

	Type	Item#	Finishes	O.D.
	Baffle	8802	Oil rubbed bronze and white Optional BA, BK rings.	5"
	Shower, Satin Glass	8803	White	5"
	Reflector	8804	Haze, white, brushed aluminum, clear Optional BA, BK rings	5"
	Shower, Satin Bubble Glass	8805WH	Wet location listed.	5"
	Eyeball	8806	White	5"
	Slotted Aperture	8808ST		5"
	Retractable Wall Wash	8811	Brushed aluminum and white	5"
	Eyeball w/White Baffle	8815	White	5"
	Wall Wash	8816	White	5"
	Pin Hole	8819	White	5"
	Gimbal	8841	White	5"

Additional Information

1. Adjusts to fit up to 1" ceiling thickness.
2. 5-11/16" height allows for use in 2"x 6" joist construction.