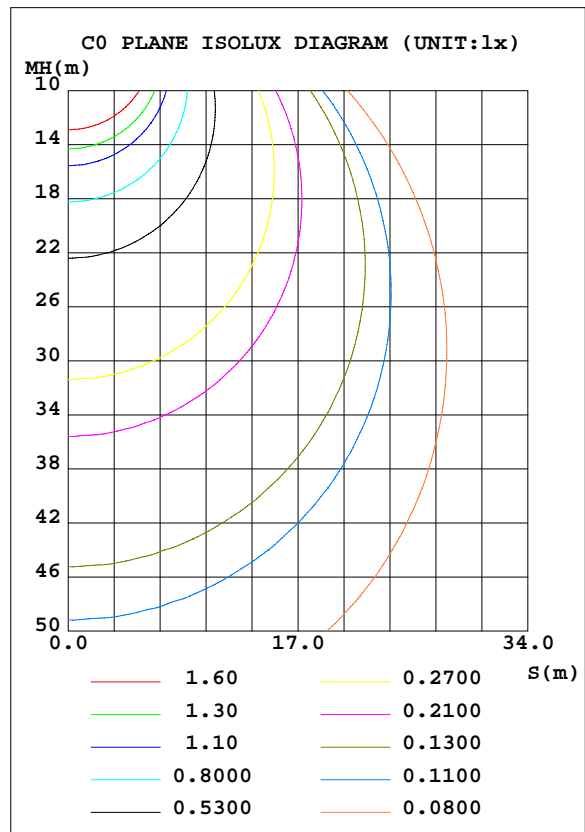
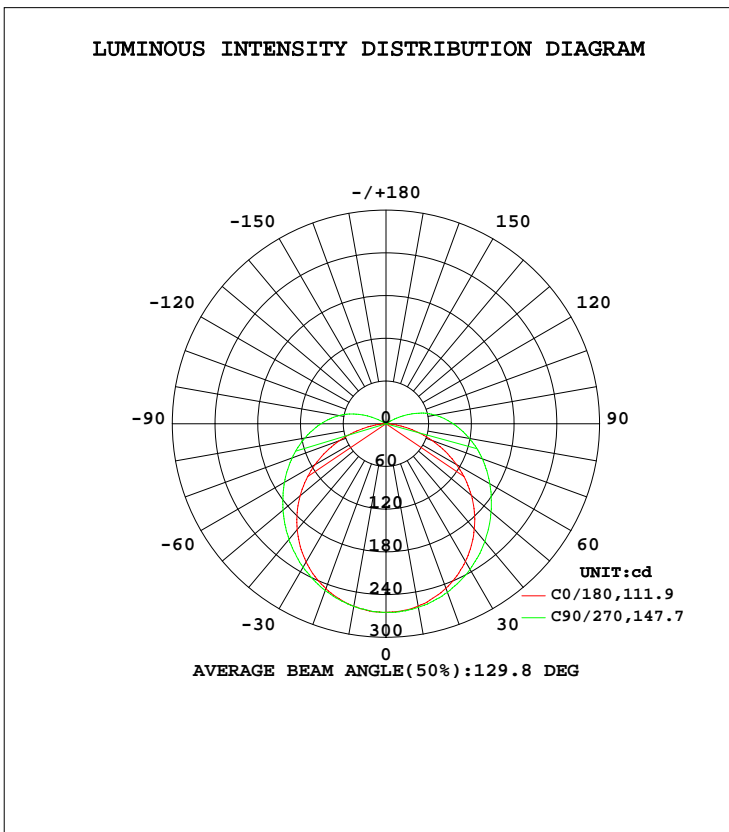


LUMINAIRE PHOTOMETRIC TEST REPORT

Test:U:120.1V I:0.0852A P:10.11W PF:0.9889 Lamp Flux:1019.39x1 lm		
NAME: 4311	TYPE:N/A	WEIGHT:N/A
SPEC.:N/A	DIM.: N/A	SERIAL No.:N/A
MFR.:	SUR.:N/A	Shielding Angle:N/A

DATA OF LAMP		PHOTOMETRIC DATA Eff: 100.81 lm/W			
MODEL	VL010-40-WH	I <sub>max</sub> (cd)	265.4	S/MH(C0/180)	1.25
NOMINAL POWER(W)		LOR(%)	100.0	S/MH(C90/270)	1.33
RATED VOLTAGE(V)	120	TOTAL FLUX(lm)	1019.4	η UP, DN(C0-180)	4.1,45.3
NOMINAL FLUX(lm)	1019.39	CIE CLASS	DIRECT	η UP, DN(C180-360)	4.5,46.1
LAMPS INSIDE	1	η up(%)	8.6	CIBSE SHR NOM	1.50
TEST VOLTAGE(V)	120	η down(%)	91.4	CIBSE SHR MAX	1.50



C Range: 0 - 360DEG  
 C Interval: 22.5DEG  
 Test Speed: 10.0deg/s  
 Temperature:25.1DEG  
 Operators:Hexy  
 Test Date:2016-06-23

γ Range: 0 - 180DEG  
 γ Interval: 1.0DEG  
 Test System: GO-R5000\_V2 SYSTEM V2.0.351  
 Humidity:47%  
 Test Distance:2.437m [K=1.0000]  
 Remarks:

ZONAL FLUX DIAGRAM

ZONAL FLUX DIAGRAM:

γ	C0	C45	C90	C135	C180	C225	C270	C315	γ	Φ zone	Φ total	%lum, lamp
10	260.5	260.2	260.4	259.9	259.9	260.5	261.9	261.2	0- 10	25.08	25.08	2.46,2.46
20	246.5	247.5	249.4	246.6	245.9	248.3	252.2	249.6	10- 20	72.13	97.21	9.54,9.54
30	224.4	227.5	232.6	227.0	223.2	229.2	236.2	230.8	20- 30	110.4	207.6	20.4,20.4
40	194.1	202.4	212.3	202.0	192.9	204.0	216.1	206.3	30- 40	135.8	343.5	33.7,33.7
50	157.3	173.2	188.7	173.0	156.7	175.0	192.7	178.1	40- 50	146.3	489.8	48,48
60	115.4	142.7	164.6	143.4	113.9	144.4	168.2	147.7	50- 60	142.1	631.8	62,62
70	69.86	113.1	140.3	114.2	68.95	114.3	144.0	118.2	60- 70	125.5	757.4	74.3,74.3
80	25.59	85.52	115.6	87.30	25.33	86.86	118.8	91.00	70- 80	100.9	858.3	84.2,84.2
90	0.6873	60.66	91.34	62.59	0.5371	62.15	94.51	65.92	80- 90	73.74	932.0	91.4,91.4
100	0.2027	37.33	67.08	39.27	0.2830	39.44	70.38	42.97	90-100	50.25	982.3	96.4,96.4
110	0.3070	9.534	37.84	11.44	0.4979	12.41	42.43	15.44	100-110	27.48	1010	99.1,99.1
120	0.2146	0.3839	6.655	0.4451	0.4462	0.3431	10.95	0.3615	110-120	8.436	1018	99.9,99.9
130	0.2601	0.3502	0.1727	0.3584	0.3731	0.3211	0.1714	0.3152	120-130	0.5297	1019	99.9,99.9
140	0.2893	0.3423	0.2246	0.3183	0.3169	0.2783	0.1787	0.2746	130-140	0.2204	1019	100,100
150	0.3579	0.3768	0.3114	0.3538	0.2822	0.2564	0.1914	0.2386	140-150	0.1768	1019	100,100
160	0.3945	0.3986	0.3635	0.3756	0.2735	0.2617	0.2334	0.2278	150-160	0.1407	1019	100,100
170	0.3776	0.3657	0.3593	0.3705	0.2736	0.2697	0.2528	0.2476	160-170	0.0893	1019	100,100
180	0.3197	0.3164	0.3211	0.3146	0.3214	0.3177	0.3161	0.3132	170-180	0.0301	1019	100,100
DEG	LUMINOUS INTENSITY:cd Less than 25% Percent = 15.2 %									UNIT:lm		

Conical surface Flux(90deg): 416.26 lm

%lum = 40.8%  
%lamp = 40.8%

Conical surface Flux(120deg): 631.84 lm

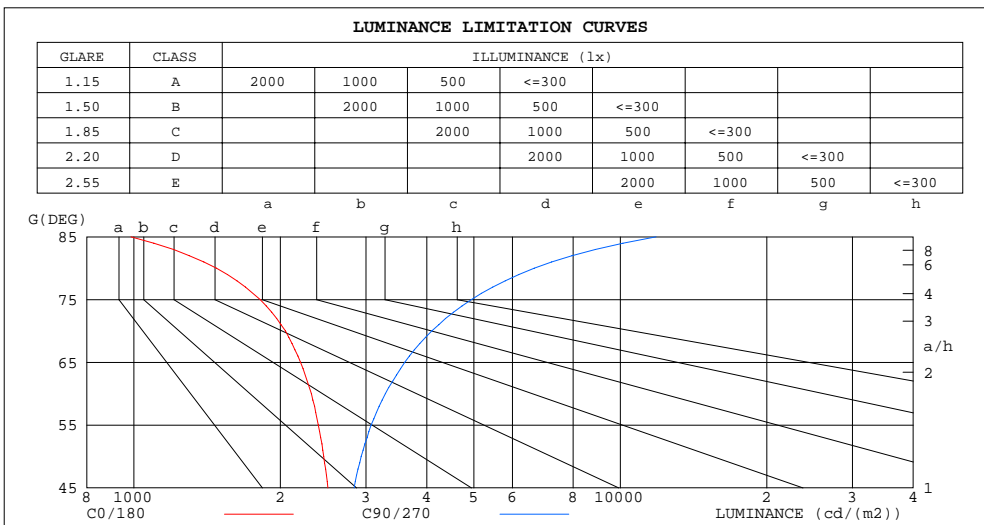
%lum = 62.0%  
%lamp = 62.0%

C Range: 0 - 360DEG  
C Interval: 22.5DEG  
Test Speed: 10.0deg/s  
Temperature:25.1DEG  
Operators:Hexy  
Test Date:2016-06-23

γ Range: 0 - 180DEG  
γ Interval: 1.0DEG  
Test System: GO-R5000\_V2 SYSTEM V2.0.351  
Humidity:47%  
Test Distance:2.437m [K=1.0000]  
Remarks:

LUMINANCE LIMITATION CURVES

Test:U:120.1V I:0.0852A P:10.11W PF:0.9889 Lamp Flux:1019.39x1 lm		
NAME: 4311	TYPE:N/A	WEIGHT:N/A
SPEC.:N/A	DIM.: N/A	SERIAL No.:N/A
MFR.:	SUR.:N/A	Shielding Angle:N/A



LUMINANCE cd/(m2)		
G(DEG)	C0/180	C90/270
85	986	11839
80	1479	6651
75	1818	4943
70	2050	4097
65	2201	3604
60	2317	3289
55	2393	3073
50	2456	2932
45	2506	2836

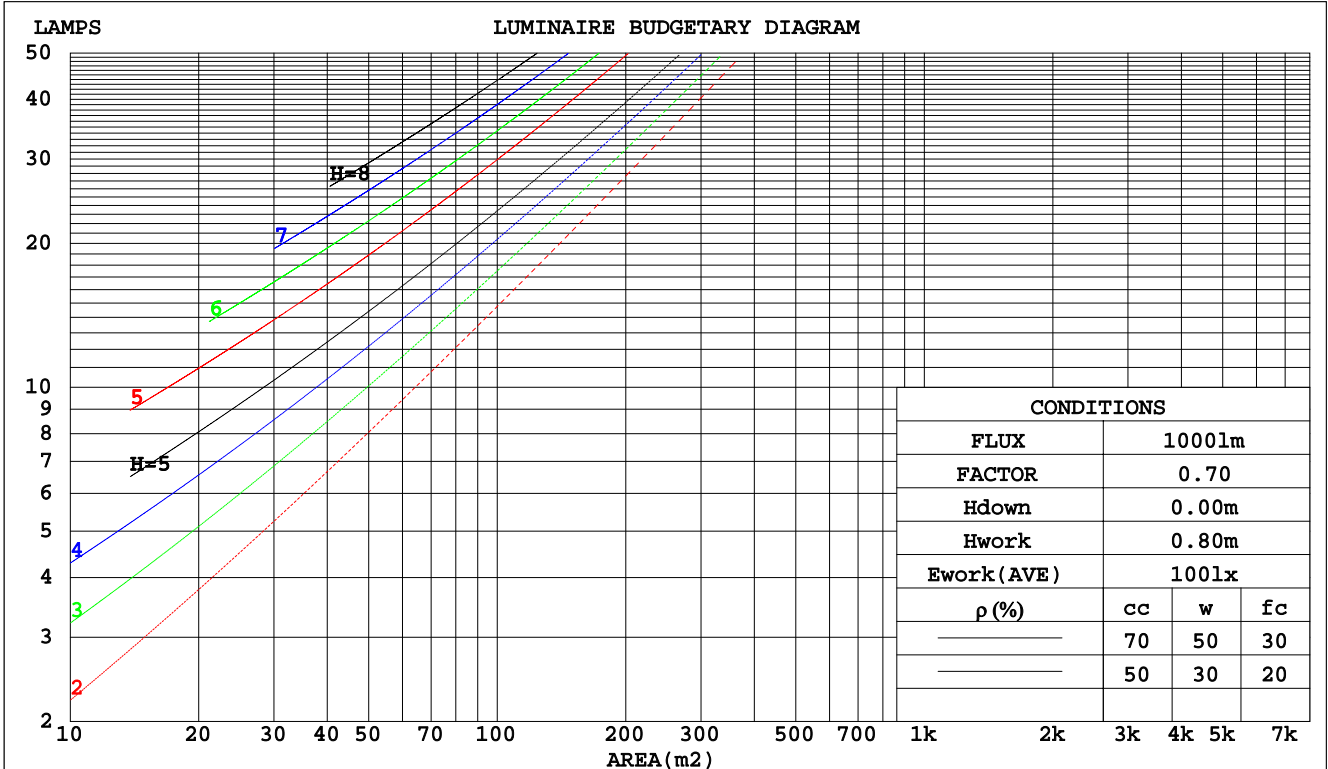
C Range: 0 - 360DEG  
 C Interval: 22.5DEG  
 Test Speed: 10.0deg/s  
 Temperature:25.1DEG  
 Operators:Hexy  
 Test Date:2016-06-23

γ Range: 0 - 180DEG  
 γ Interval: 1.0DEG  
 Test System: GO-R5000\_V2 SYSTEM V2.0.351  
 Humidity:47%  
 Test Distance:2.437m [K=1.0000]  
 Remarks:

CU AND LUMINAIRE BUDGETARY ESTIMATE DIAGRAM

Test:U:120.1V I:0.0852A P:10.11W PF:0.9889 Lamp Flux:1019.39x1 lm		
NAME: 4311	TYPE:N/A	WEIGHT:N/A
SPEC.:N/A	DIM.: N/A	SERIAL No.:N/A
MFR.:	SUR.:N/A	Shielding Angle:N/A

pcc	80%			70%			50%			30%			10%			0
	50%	30%	10%	50%	30%	10%	50%	30%	10%	50%	30%	10%	50%	30%	10%	0
pw																
pfc	20%			20%			20%			20%			20%			0
RCR	RCR:Room Cavity Ratio      Coefficients of Utilization(CU)															
0.0	1.17	1.17	1.17	1.13	1.13	1.13	1.06	1.06	1.06	1.00	1.00	1.00	.94	.94	.94	.91
1.0	.98	.93	.88	.95	.90	.86	.89	.85	.81	.83	.80	.77	.78	.76	.73	.71
2.0	.84	.76	.69	.81	.74	.68	.76	.70	.65	.72	.67	.62	.67	.63	.60	.57
3.0	.73	.64	.57	.71	.62	.56	.66	.59	.53	.62	.56	.51	.59	.54	.49	.47
4.0	.64	.55	.47	.62	.53	.46	.58	.51	.45	.55	.49	.43	.52	.46	.42	.39
5.0	.57	.47	.40	.55	.46	.40	.52	.44	.38	.49	.42	.37	.46	.41	.36	.34
6.0	.51	.42	.35	.50	.41	.34	.47	.39	.33	.44	.38	.32	.42	.36	.31	.29
7.0	.46	.37	.31	.45	.36	.30	.43	.35	.29	.40	.34	.29	.38	.32	.28	.26
8.0	.42	.33	.27	.41	.33	.27	.39	.31	.26	.37	.30	.25	.35	.29	.25	.23
9.0	.38	.30	.24	.38	.29	.24	.36	.28	.23	.34	.27	.23	.32	.27	.22	.20
10.0	.35	.27	.22	.35	.27	.22	.33	.26	.21	.31	.25	.21	.30	.24	.20	.18



C Range: 0 - 360DEG  
 C Interval: 22.5DEG  
 Test Speed: 10.0deg/s  
 Temperature:25.1DEG  
 Operators:Hexy  
 Test Date:2016-06-23

γ Range: 0 - 180DEG  
 γ Interval: 1.0DEG  
 Test System:GO-R5000\_V2 SYSTEM V2.0.351  
 Humidity:47%  
 Test Distance:2.437m [K=1.0000]  
 Remarks:

WEC AND CCEC

Test:U:120.1V I:0.0852A P:10.11W PF:0.9889 Lamp Flux:1019.39x1 lm		
NAME: 4311	TYPE:N/A	WEIGHT:N/A
SPEC.:N/A	DIM.: N/A	SERIAL No.:N/A
MFR.:	SUR.:N/A	Shielding Angle:N/A

ρcc	80%			70%			50%			30%			10%			0
ρw	50%	30%	10%	50%	30%	10%	50%	30%	10%	50%	30%	10%	50%	30%	10%	0
ρfc	20%			20%			20%			20%			20%			0
RCR	RCR:Room Cavity Ratio						Wall Exitance Coefficients(WEC)									
0.0																
1.0	.384	.218	.069	.374	.213	.068	.355	.204	.065	.338	.195	.063	.323	.187	.060	
2.0	.334	.183	.056	.326	.179	.055	.309	.172	.053	.294	.165	.052	.280	.158	.050	
3.0	.298	.159	.048	.290	.155	.047	.275	.149	.045	.261	.143	.044	.249	.138	.043	
4.0	.269	.140	.041	.262	.137	.040	.248	.132	.039	.236	.127	.038	.224	.122	.037	
5.0	.244	.125	.036	.238	.122	.036	.226	.118	.035	.215	.113	.034	.204	.109	.033	
6.0	.224	.112	.032	.218	.110	.032	.208	.106	.031	.197	.103	.030	.188	.099	.029	
7.0	.207	.102	.029	.202	.100	.029	.192	.097	.028	.183	.094	.027	.174	.090	.027	
8.0	.192	.094	.026	.187	.092	.026	.178	.089	.025	.170	.086	.025	.162	.083	.024	
9.0	.179	.087	.024	.175	.085	.024	.166	.082	.023	.159	.080	.023	.151	.077	.022	
10.0	.167	.080	.022	.164	.079	.022	.156	.076	.022	.149	.074	.021	.142	.072	.021	

ρcc	80%			70%			50%			30%			10%			0
ρw	50%	30%	10%	50%	30%	10%	50%	30%	10%	50%	30%	10%	50%	30%	10%	0
ρfc	20%			20%			20%			20%			20%			0
RCR	RCR:Room Cavity Ratio						Ceiling Cavity Exitance Coefficients(CCEC)									
0.0	.256	.256	.256	.219	.219	.219	.149	.149	.149	.086	.086	.086	.027	.027	.027	
1.0	.251	.221	.194	.215	.190	.167	.147	.131	.116	.085	.076	.067	.027	.024	.022	
2.0	.244	.198	.159	.209	.170	.138	.143	.118	.096	.083	.069	.056	.027	.022	.018	
3.0	.237	.181	.137	.203	.156	.119	.139	.109	.083	.080	.063	.049	.026	.021	.016	
4.0	.229	.168	.122	.196	.145	.106	.135	.101	.075	.078	.059	.044	.025	.019	.015	
5.0	.221	.158	.112	.190	.137	.098	.131	.096	.069	.076	.056	.041	.024	.018	.013	
6.0	.213	.150	.105	.183	.130	.091	.126	.091	.065	.073	.054	.038	.024	.018	.013	
7.0	.206	.143	.100	.177	.124	.087	.122	.087	.062	.071	.051	.037	.023	.017	.012	
8.0	.199	.138	.096	.171	.119	.083	.119	.084	.059	.069	.049	.035	.022	.016	.012	
9.0	.193	.133	.092	.166	.115	.081	.115	.081	.057	.067	.048	.034	.022	.016	.011	
10.0	.187	.129	.090	.161	.112	.078	.112	.079	.056	.065	.046	.033	.021	.015	.011	

C Range: 0 - 360DEG  
 C Interval: 22.5DEG  
 Test Speed: 10.0deg/s  
 Temperature:25.1DEG  
 Operators:Hexy  
 Test Date:2016-06-23

γ Range: 0 - 180DEG  
 γ Interval: 1.0DEG  
 Test System: GO-R5000\_V2 SYSTEM V2.0.351  
 Humidity:47%  
 Test Distance:2.437m [K=1.0000]  
 Remarks:

UGR(Unified Glare Rating) Table

Test:U:120.1V I:0.0852A P:10.11W PF:0.9889 Lamp Flux:1019.39x1 lm										
NAME: 4311					TYPE:N/A			WEIGHT:N/A		
SPEC.:N/A					DIM.: N/A			SERIAL No.:N/A		
MFR.:					SUR.:N/A			Shielding Angle:N/A		
ceiling/cavity	0.7	0.7	0.5	0.5	0.3	0.7	0.7	0.5	0.5	0.3
walls	0.5	0.3	0.5	0.3	0.3	0.5	0.3	0.5	0.3	0.3
working plane	0.2	0.2	0.2	0.2	0.2	0.2	0.2	0.2	0.2	0.2
Room dimensions	Viewed crosswise					Viewed endwise				
x = 2H y = 2H	15.0	16.5	15.4	16.9	17.3	16.5	18.0	16.9	18.3	18.7
3H	16.6	17.9	17.0	18.3	18.8	19.0	20.4	19.4	20.8	21.2
4H	17.2	18.5	17.6	18.9	19.3	20.4	21.7	20.8	22.1	22.6
6H	17.6	18.8	18.0	19.2	19.7	21.9	23.2	22.4	23.6	24.1
8H	17.7	18.9	18.1	19.3	19.8	22.8	24.0	23.2	24.4	24.9
12H	17.7	18.9	18.2	19.3	19.8	23.7	24.9	24.2	25.4	25.9
4H 2H	16.0	17.3	16.5	17.7	18.2	17.1	18.4	17.5	18.8	19.2
3H	17.8	19.0	18.3	19.4	19.9	19.9	21.0	20.3	21.5	22.0
4H	18.6	19.7	19.1	20.1	20.7	21.4	22.5	21.9	23.0	23.5
6H	19.2	20.2	19.7	20.7	21.2	23.2	24.2	23.7	24.7	25.2
8H	19.4	20.3	19.9	20.8	21.4	24.2	25.1	24.7	25.6	26.2
12H	19.5	20.3	20.1	20.9	21.5	25.3	26.1	25.8	26.6	27.2
8H 4H	19.5	20.4	20.0	20.9	21.5	21.8	22.7	22.3	23.2	23.8
6H	20.5	21.2	21.0	21.8	22.4	23.9	24.6	24.4	25.2	25.8
8H	20.9	21.6	21.5	22.1	22.8	25.0	25.7	25.6	26.3	26.9
12H	21.2	21.8	21.8	22.4	23.0	26.4	27.0	27.0	27.6	28.3
12H 4H	19.8	20.6	20.3	21.2	21.8	21.8	22.7	22.4	23.2	23.8
6H	21.0	21.7	21.6	22.2	22.9	24.0	24.7	24.6	25.2	25.9
8H	21.5	22.1	22.1	22.7	23.4	25.3	25.9	25.9	26.5	27.1
Variations with the observer position at spacings:										
S = 1.0H	+ 0.1 / - 0.1					+ 0.1 / - 0.1				
1.5H	+ 0.2 / - 0.3					+ 0.2 / - 0.3				
2.0H	+ 0.2 / - 0.4					+ 0.2 / - 0.4				

CIE Pub.117 Corrected 1019 lm Total Lamp Luminous Flux.(8log(F/F0) = 0.1)

C Range: 0 - 360DEG  
 C Interval: 22.5DEG  
 Test Speed: 10.0deg/s  
 Temperature:25.1DEG  
 Operators:Hexy  
 Test Date:2016-06-23

γ Range: 0 - 180DEG  
 γInterval: 1.0DEG  
 Test System: GO-R5000\_V2 SYSTEM V2.0.351  
 Humidity:47%  
 Test Distance:2.437m [K=1.0000]  
 Remarks:

**UTILIZATION FACTORS TABLE**

Test:U:120.1V I:0.0852A P:10.11W PF:0.9889 Lamp Flux:1019.39x1 lm		
NAME: 4311	TYPE:N/A	WEIGHT:N/A
SPEC.:N/A	DIM.: N/A	SERIAL No.:N/A
MFR.:	SUR.:N/A	Shielding Angle:N/A

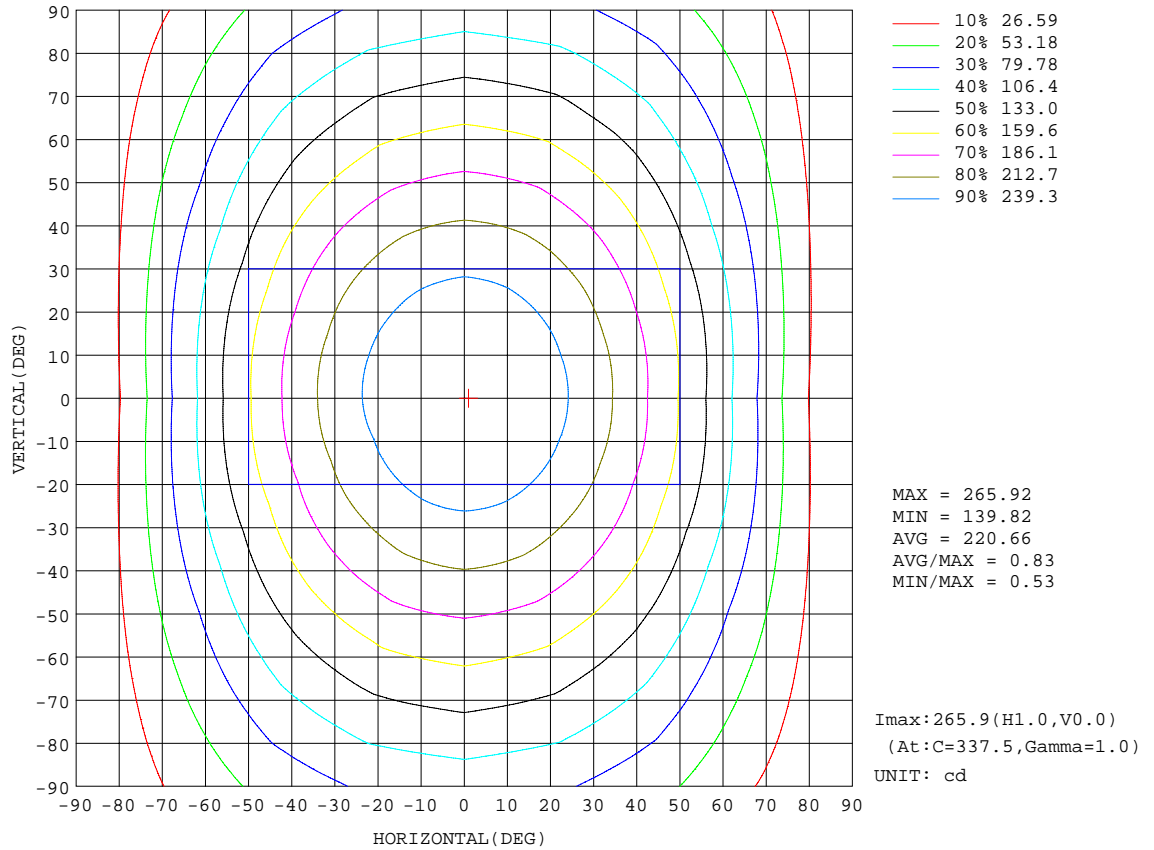
REFLECTANCE										
Ceiling	0.8	0.8	0.8	0.7	0.7	0.7	0.5	0.5	0.5	0
Walls	0.7	0.5	0.3	0.7	0.5	0.3	0.7	0.5	0.3	0
Working plane	0.2	0.2	0.2	0.2	0.2	0.2	0.2	0.2	0.2	0
ROOM INDEX	UTILIZATION FACTORS(PERCENT) $k(RI) \times RCR = 5$									
k = 0.60	51	39	31	50	38	31	49	38	31	24
0.80	60	47	39	59	47	39	57	46	39	31
1.00	68	55	47	67	55	47	64	56	46	38
1.25	75	63	54	73	62	54	70	60	53	44
1.50	80	68	60	78	67	59	74	65	58	49
2.00	87	77	69	85	75	68	80	72	66	56
2.50	92	82	74	89	80	73	84	77	71	60
3.00	95	86	79	92	84	78	87	81	75	64
4.00	100	92	86	97	90	84	91	86	81	69
5.00	103	96	90	100	94	88	94	89	85	72
ROOM INDEX	UF(total)									Direct
According to DIN EN 13032-2 2004			Suspended				SHRNOM = 1.25			

C Range: 0 - 360DEG  
 C Interval: 22.5DEG  
 Test Speed: 10.0deg/s  
 Temperature:25.1DEG  
 Operators:Hexy  
 Test Date:2016-06-23

$\gamma$  Range: 0 - 180DEG  
 $\gamma$  Interval: 1.0DEG  
 Test System: GO-R5000\_V2 SYSTEM V2.0.351  
 Humidity:47%  
 Test Distance:2.437m [K=1.0000]  
 Remarks:

ISOCANDELA DIAGRAM

Test:U:120.1V I:0.0852A P:10.11W PF:0.9889 Lamp Flux:1019.39x1 lm		
NAME: 4311	TYPE:N/A	WEIGHT:N/A
SPEC.:N/A	DIM.: N/A	SERIAL No.:N/A
MFR.:	SUR.:N/A	Shielding Angle:N/A



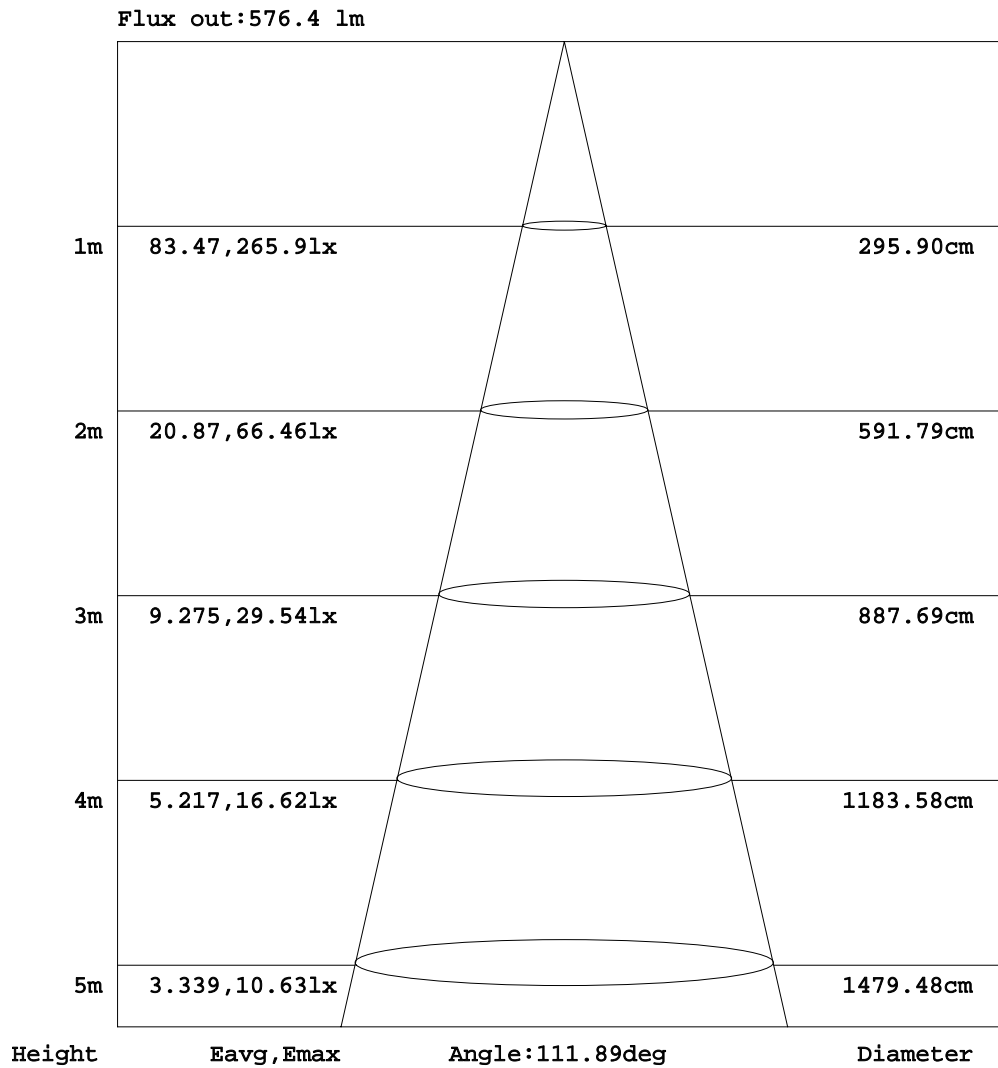
C Range: 0 - 360DEG  
 C Interval: 22.5DEG  
 Test Speed: 10.0deg/s  
 Temperature: 25.1DEG  
 Operators: Hexy  
 Test Date: 2016-06-23

γ Range: 0 - 180DEG  
 γ Interval: 1.0DEG  
 Test System: GO-R5000\_V2 SYSTEM V2.0.351  
 Humidity: 47%  
 Test Distance: 2.437m [K=1.0000]  
 Remarks:



AAI Figure

Test:U:120.1V I:0.0852A P:10.11W PF:0.9889 Lamp Flux:1019.39x1 lm		
NAME: 4311	TYPE:N/A	WEIGHT:N/A
SPEC.:N/A	DIM.: N/A	SERIAL No.:N/A
MFR.:	SUR.:N/A	Shielding Angle:N/A



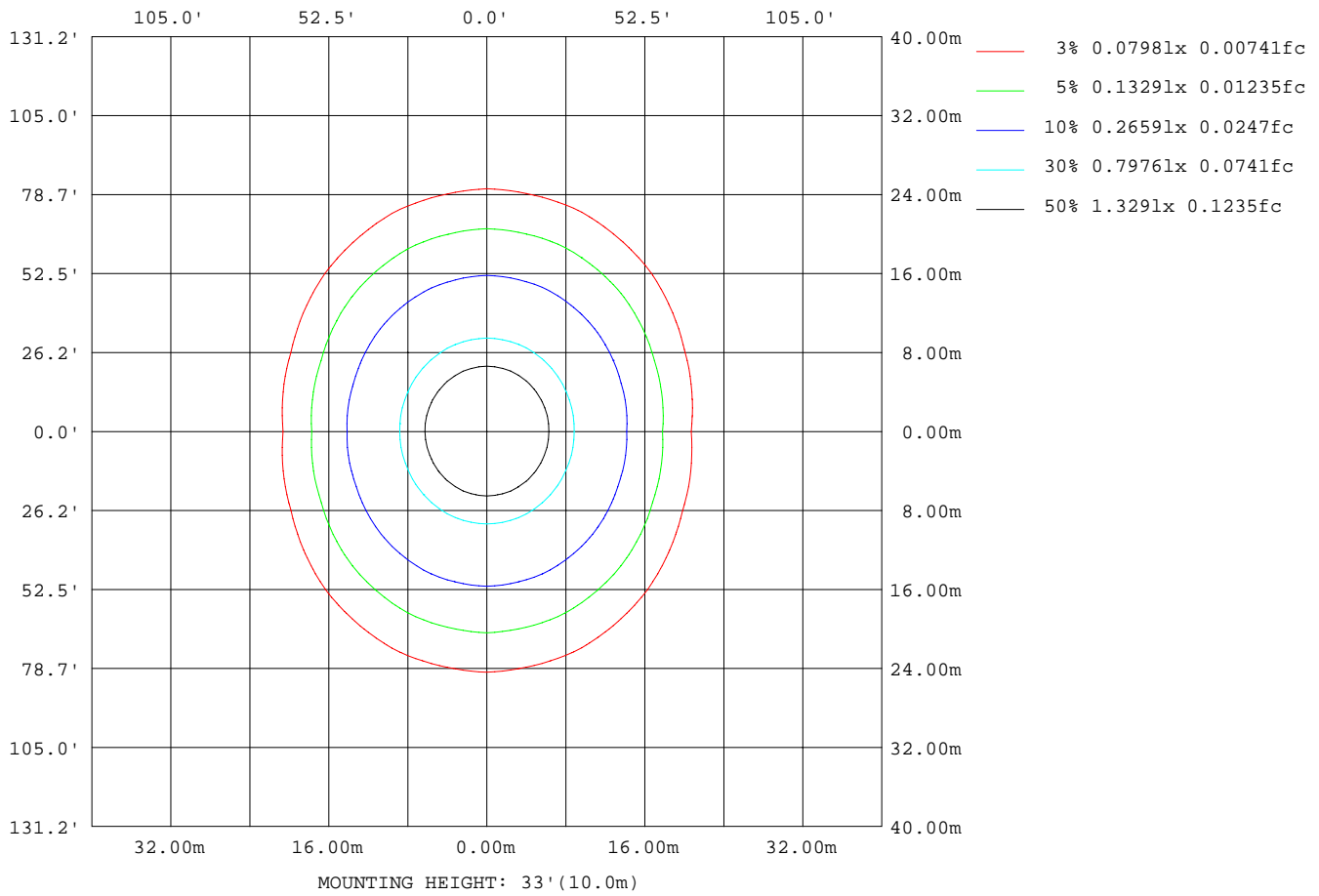
Note:The Curves indicate the illuminated area and the average illumination when the luminaire is at different distance.

C Range: 0 - 360DEG  
 C Interval: 22.5DEG  
 Test Speed: 10.0deg/s  
 Temperature:25.1DEG  
 Operators:Hexy  
 Test Date:2016-06-23

γ Range: 0 - 180DEG  
 γInterval: 1.0DEG  
 Test System: GO-R5000\_V2 SYSTEM V2.0.351  
 Humidity:47%  
 Test Distance:2.437m [K=1.0000]  
 Remarks:

ISOLUX DIAGRAM

Test:U:120.1V I:0.0852A P:10.11W PF:0.9889 Lamp Flux:1019.39x1 lm		
NAME: 4311	TYPE:N/A	WEIGHT:N/A
SPEC.:N/A	DIM.: N/A	SERIAL No.:N/A
MFR.:	SUR.:N/A	Shielding Angle:N/A



C Range: 0 - 360DEG  
 C Interval: 22.5DEG  
 Test Speed: 10.0deg/s  
 Temperature:25.1DEG  
 Operators:Hexy  
 Test Date:2016-06-23

γ Range: 0 - 180DEG  
 γ Interval: 1.0DEG  
 Test System: GO-R5000\_V2 SYSTEM V2.0.351  
 Humidity:47%  
 Test Distance:2.437m [K=1.0000]  
 Remarks:

LED Avg.L Report

Test:U:120.1V I:0.0852A P:10.11W PF:0.9889 Lamp Flux:1019.39x1 lm		
NAME: 4311	TYPE:N/A	WEIGHT:N/A
SPEC.:N/A	DIM.: N/A	SERIAL No.:N/A
MFR.:	SUR.:N/A	Shielding Angle:N/A

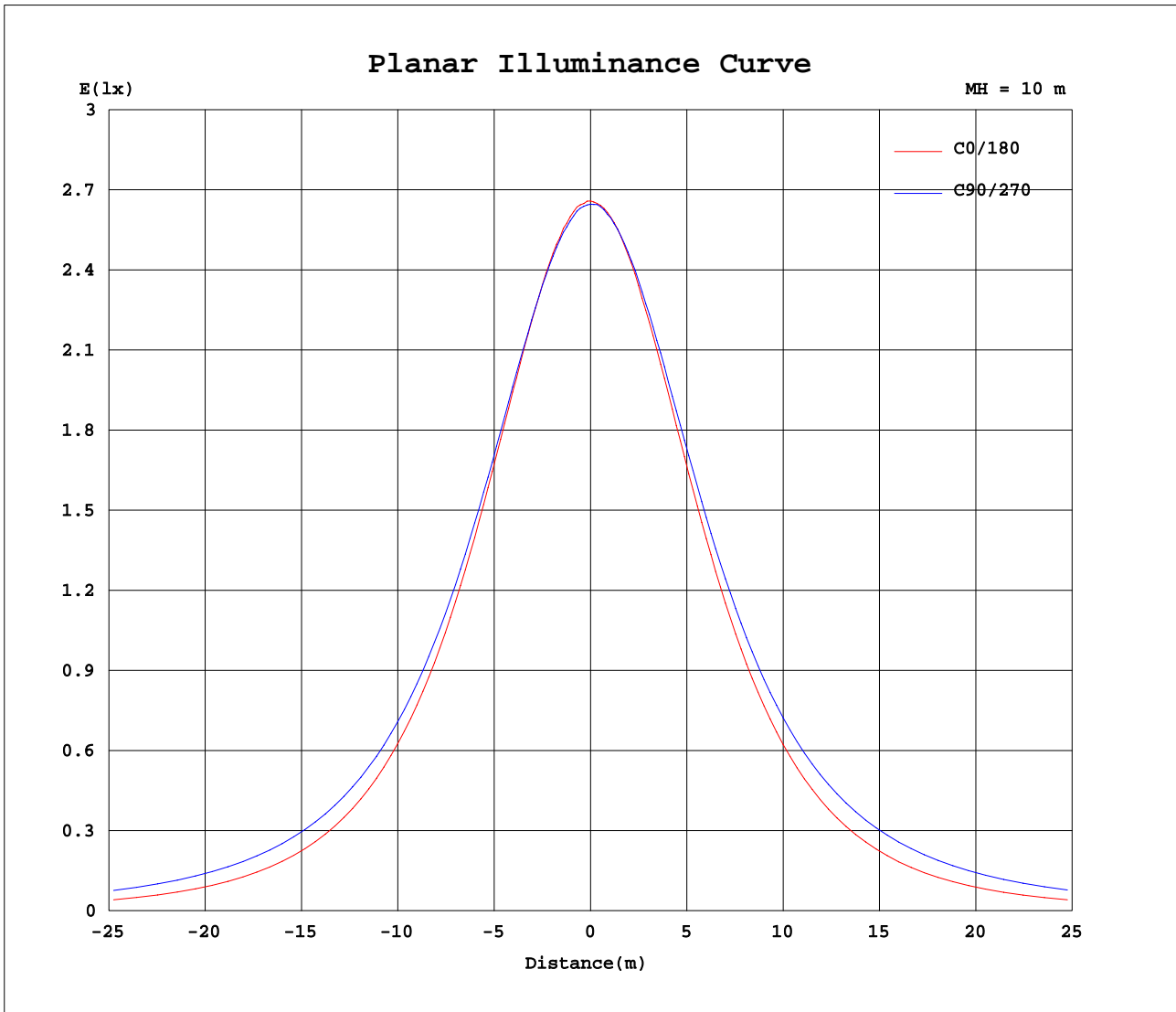
AvgL	cd/m2
L_0~180(65)av	2182
L_0~180(75)av	1800
L_0~180(85)av	968
L_90~270(65)av	3652
L_90~270(75)av	5017
L_90~270(85)av	12039
L_45(65)av	3066
L_45(75)av	3904
L_45(85)av	8593

Standard: GB/T 29293-2012

C Range: 0 - 360DEG  
 C Interval: 22.5DEG  
 Test Speed: 10.0deg/s  
 Temperature:25.1DEG  
 Operators:Hexy  
 Test Date:2016-06-23

γ Range: 0 - 180DEG  
 γ Interval: 1.0DEG  
 Test System:GO-R5000\_V2 SYSTEM V2.0.351  
 Humidity:47%  
 Test Distance:2.437m [K=1.0000]  
 Remarks:

Planar Illuminance Curve



C Range: 0 - 360DEG  
 C Interval: 22.5DEG  
 Test Speed: 10.0deg/s  
 Temperature: 25.1DEG  
 Operators: Hexy  
 Test Date: 2016-06-23

γ Range: 0 - 180DEG  
 γ Interval: 1.0DEG  
 Test System: GO-R5000\_V2 SYSTEM V2.0.351  
 Humidity: 47%  
 Test Distance: 2.437m [K=1.0000]  
 Remarks:

LUMINOUS DISTRIBUTION INTENSITY DATA

Test:U:120.1V I:0.0852A P:10.11W PF:0.9889 Lamp Flux:1019.39x1 lm		
NAME: 4311	TYPE:N/A	WEIGHT:N/A
SPEC.:N/A	DIM.: N/A	SERIAL No.:N/A
MFR.:	SUR.:N/A	Shielding Angle:N/A

Table--1

UNIT: cd

C(DEG) γ (DEG)	0	22.5	45	67.5	90	112.5	135	157.5	180	202.5	225	247.5	270	292.5	315	337.5			
0	265	265	265	265	265	265	265	265	265	265	265	265	265	265	265	265			
5	264	264	263	264	264	263	263	264	264	264	264	264	264	264	264	264			
10	260	260	260	261	260	260	260	260	260	260	260	261	262	262	261	261			
15	254	255	254	255	256	255	254	254	254	255	256	257	258	257	257	256			
20	247	247	247	249	249	248	247	246	246	247	248	250	252	252	250	248			
25	236	237	238	241	242	240	237	236	236	237	240	243	245	244	241	239			
30	224	224	228	231	233	231	227	224	223	225	229	234	236	235	231	227			
35	210	211	216	221	222	220	215	210	209	211	217	224	226	225	219	214			
40	194	196	202	209	212	209	202	195	193	196	204	212	216	213	206	199			
45	177	180	188	197	201	197	188	179	175	180	190	200	205	202	193	183			
50	157	162	173	184	189	185	173	161	157	162	175	187	193	189	178	166			
55	137	143	158	171	176	172	158	143	136	144	160	174	180	176	163	147			
60	115	124	143	158	165	159	143	124	114	124	144	162	168	163	148	128			
65	92.7	105	127	146	152	146	128	105	91.8	105	130	148	156	151	133	109			
70	69.9	85.8	113	133	140	133	114	87.0	69.0	86.3	114	136	144	138	118	90.7			
75	46.9	68.1	99.1	120	128	121	100	69.9	46.3	68.6	100	123	132	125	104	73.2			
80	25.6	52.4	85.5	108	116	109	87.3	54.5	25.3	53.0	86.9	110	119	112	91.0	57.7			
85	8.57	38.1	72.7	95.3	103	96.2	74.5	40.8	8.31	39.0	74.1	97.6	107	99.9	78.2	43.8			
90	0.69	26.5	60.7	83.3	91.3	84.2	62.6	29.4	0.54	27.5	62.1	85.8	94.5	87.8	65.9	31.9			
95	0.26	16.9	49.1	71.5	79.4	72.5	51.1	19.5	0.24	18.0	50.9	73.9	82.5	75.9	54.6	21.9			
100	0.20	5.98	37.3	59.2	67.1	60.0	39.3	8.32	0.28	7.42	39.4	62.0	70.4	63.8	43.0	11.0			
105	0.27	0.63	23.6	45.6	53.5	46.5	25.6	0.82	0.44	0.59	26.3	49.1	57.4	51.0	29.9	0.82			
110	0.31	0.58	9.53	30.1	37.8	31.1	11.4	0.77	0.50	0.60	12.4	34.0	42.4	35.9	15.4	0.50			
115	0.23	0.57	0.42	14.7	22.0	15.7	0.55	0.73	0.49	0.62	0.55	18.6	26.5	20.3	2.25	0.47			
120	0.21	0.49	0.38	0.93	6.66	2.52	0.45	0.63	0.45	0.57	0.34	4.11	10.9	5.41	0.36	0.45			
125	0.25	0.42	0.37	0.24	0.16	0.21	0.39	0.51	0.41	0.48	0.34	0.21	0.17	0.23	0.34	0.41			
130	0.26	0.36	0.35	0.24	0.17	0.22	0.36	0.43	0.37	0.40	0.32	0.21	0.17	0.23	0.32	0.35			
135	0.27	0.34	0.34	0.26	0.19	0.24	0.33	0.38	0.34	0.35	0.30	0.21	0.18	0.22	0.30	0.30			
140	0.29	0.33	0.34	0.28	0.22	0.26	0.32	0.36	0.32	0.31	0.28	0.21	0.18	0.21	0.27	0.25			
145	0.32	0.34	0.36	0.31	0.27	0.29	0.33	0.36	0.30	0.28	0.26	0.21	0.18	0.19	0.25	0.23			
150	0.36	0.37	0.38	0.35	0.31	0.32	0.35	0.37	0.28	0.26	0.26	0.22	0.19	0.19	0.24	0.22			
155	0.38	0.38	0.39	0.36	0.34	0.35	0.36	0.38	0.28	0.27	0.26	0.24	0.22	0.21	0.23	0.24			
160	0.39	0.39	0.40	0.37	0.36	0.37	0.38	0.39	0.27	0.27	0.26	0.25	0.23	0.22	0.23	0.24			
165	0.38	0.39	0.39	0.37	0.36	0.36	0.37	0.38	0.27	0.27	0.26	0.26	0.25	0.24	0.24	0.24			
170	0.38	0.38	0.37	0.36	0.36	0.36	0.37	0.38	0.27	0.27	0.27	0.27	0.25	0.24	0.25	0.25			
175	0.35	0.35	0.35	0.35	0.34	0.34	0.35	0.35	0.30	0.30	0.30	0.29	0.28	0.28	0.28	0.29			
180	0.32	0.32	0.32	0.31	0.32	0.31	0.31	0.32	0.32	0.32	0.32	0.32	0.32	0.32	0.31	0.32			

C Range: 0 - 360DEG  
 C Interval: 22.5DEG  
 Test Speed: 10.0deg/s  
 Temperature:25.1DEG  
 Operators:Hexy  
 Test Date:2016-06-23

γ Range: 0 - 180DEG  
 γ Interval: 1.0DEG  
 Test System: GO-R5000\_V2 SYSTEM V2.0.351  
 Humidity:47%  
 Test Distance:2.437m [K=1.0000]  
 Remarks: