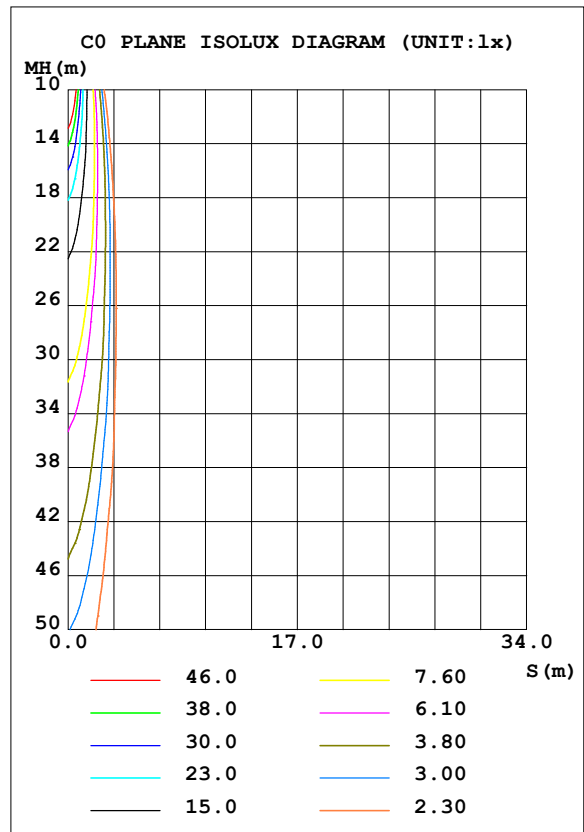
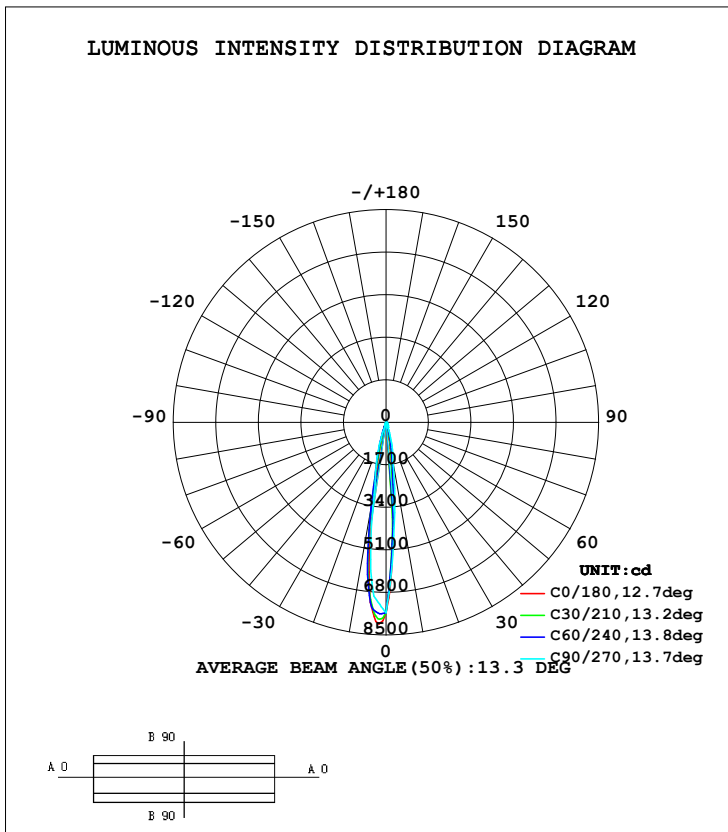


LUMINAIRE PHOTOMETRIC TEST REPORT

Test:U:0.1164V I:0A P:0W PF:0 Lamp Flux:726.708x1 lm		
NAME: WM8-HO	TYPE:	WEIGHT:
SPEC.:	DIM.:	SERIAL No.:2023111505
MFR.: JEWOO	SUR.:0.05m	PROTECTION ANGLE:

DATA OF LAMP		PHOTOMETRIC DATA			
MODEL	WM8-HO	I <sub>max</sub> (cd)	8061	S/MH (C0/180)	0.28
NOMINAL POWER (W)		LOR (%)	100.0	S/MH (C90/270)	0.30
RATED VOLTAGE (V)	6.45	TOTAL FLUX (lm)	726.71	η UP, DN (C0-180)	0.0, 44.4
NOMINAL FLUX (lm)	726.708	CIE CLASS	DIRECT	η UP, DN (C180-360)	0.0, 55.6
LAMPS INSIDE	1	η up (%)	0.0	CIBSE SHR NOM	0.00
TEST VOLTAGE (V)	6.45	η down (%)	100.0	CIBSE SHR MAX	1.00



C Range: 0 - 360DEG  
 C Interval: 5.0DEG  
 Test Speed: HIGH  
 Temperature: 25.3DEG  
 Operators: HJL  
 Test Date: 2023-11-15

γ Range: 0 - 90DEG  
 γ Interval: 0.5DEG  
 Test System: EVERFINE GO-2000H\_V1 SYSTEM V2.0.287  
 Humidity: 65.0%  
 Test Distance: 13.252m [K=1.0000]  
 Remarks: DC6.45V

ZONAL FLUX DIAGRAM

ZONAL FLUX DIAGRAM:

γ	C0	C45	C90	C135	C180	C225	C270	C315	γ	Φ zone	Φ total	%lum, lamp
5	3329	3134	3928	5076	7226	7253	6454	4301	0- 5	143.5	143.5	19.7,19.7
10	920.1	1166	1576	2208	2816	3645	2508	1278	5- 10	235.8	379.3	52.2,52.2
15	251.0	441.3	910.3	815.0	760.3	833.1	1345	324.6	10- 15	141.2	520.5	71.6,71.6
20	113.1	169.9	245.0	331.3	205.5	293.2	182.6	134.7	15- 20	71.09	591.6	81.4,81.4
25	59.01	65.73	163.1	108.6	101.6	113.5	119.9	65.73	20- 25	30.61	622.2	85.6,85.6
30	46.16	40.99	81.27	50.28	54.13	57.08	57.10	41.63	25- 30	18.94	641.1	88.2,88.2
35	38.12	32.30	63.69	36.42	41.48	40.15	49.75	32.91	30- 35	13.72	654.8	90.1,90.1
40	31.66	25.25	46.11	27.89	33.71	30.04	42.40	25.42	35- 40	12.06	666.9	91.8,91.8
45	25.35	21.31	29.86	24.55	30.14	24.94	35.36	21.05	40- 45	10.63	677.5	93.2,93.2
50	22.67	18.03	24.24	21.85	26.12	21.14	30.88	17.39	45- 50	9.511	687.0	94.5,94.5
55	19.31	15.11	19.93	19.58	22.70	18.29	26.71	13.90	50- 55	8.752	695.8	95.7,95.7
60	15.71	12.16	15.63	17.23	18.14	16.23	22.55	11.58	55- 60	7.894	703.7	96.8,96.8
65	10.66	8.737	13.05	14.35	15.22	14.16	18.16	9.423	60- 65	6.861	710.5	97.8,97.8
70	6.197	6.254	10.47	10.95	12.45	12.04	13.77	7.600	65- 70	5.590	716.1	98.5,98.5
75	3.236	4.108	8.066	7.001	9.144	10.21	10.95	5.911	70- 75	4.266	720.4	99.1,99.1
80	1.500	2.899	5.666	4.739	5.272	7.569	8.138	4.603	75- 80	3.107	723.5	99.6,99.6
85	0.4569	1.856	3.266	2.613	2.164	4.924	5.322	3.439	80- 85	2.053	725.6	99.8,99.8
90	0.0235	0.8549	0.8659	0.4918	0.0289	2.342	2.506	2.307	85- 90	1.154	726.7	100,100
95									90- 95			
100									95-100			
105									100-105			
110									105-110			
115									110-115			
120									115-120			
125									120-125			
130									125-130			
135									130-135			
140									135-140			
145									140-145			
150									145-150			
155									150-155			
160									155-160			
165									160-165			
170									165-170			
175									170-175			
180									175-180			
DEG	LUMINOUS INTENSITY:cd								UNIT:lm			

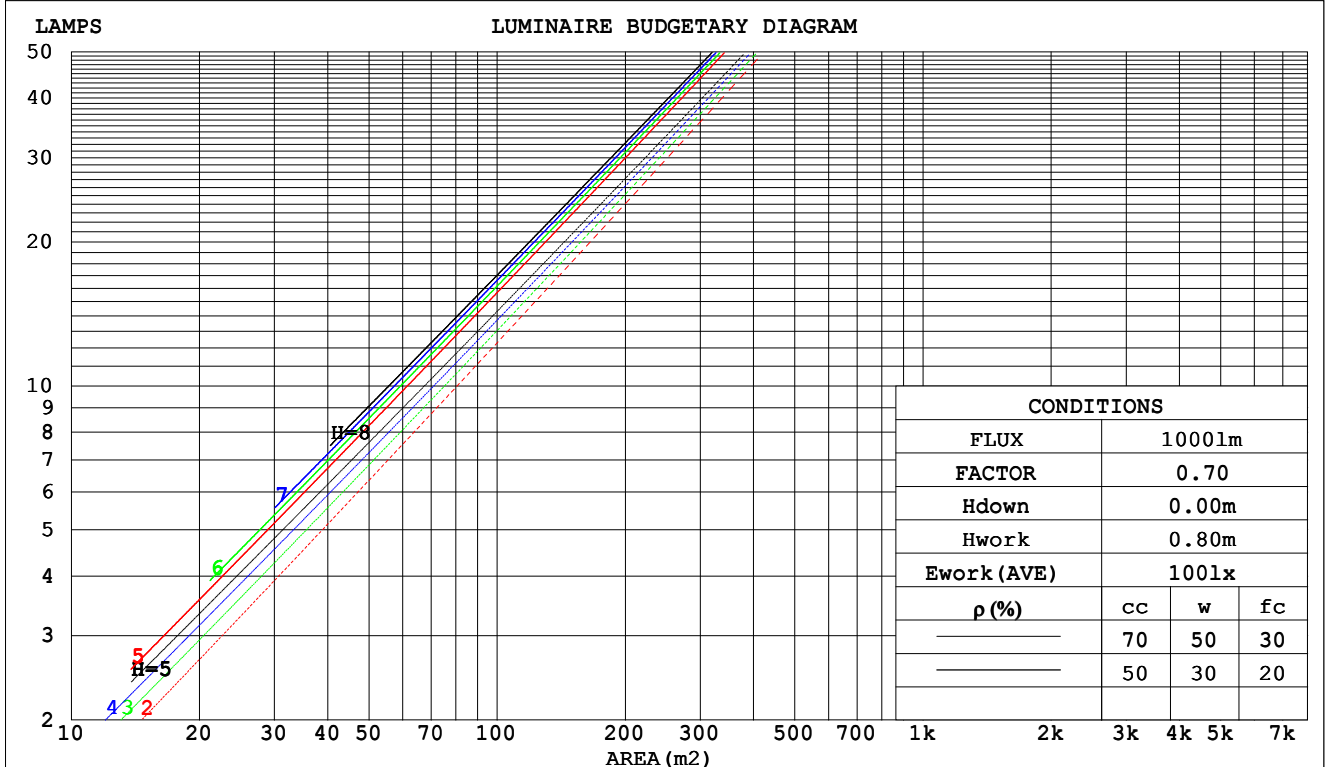
C Range: 0 - 360DEG  
 C Interval: 5.0DEG  
 Test Speed: HIGH  
 Temperature:25.3DEG  
 Operators:HJL  
 Test Date:2023-11-15

γ Range: 0 - 90DEG  
 γ Interval: 0.5DEG  
 Test System:EVERFINE GO-2000H\_V1 SYSTEM V2.0.287  
 Humidity:65.0%  
 Test Distance:13.252m [K=1.0000]  
 Remarks: DC6.45V

CU AND LUMINAIRE BUDGETARY ESTIMATE DIAGRAM

Test:U:0.1164V I:0A P:0W PF:0 Lamp Flux:726.708x1 lm		
NAME: WM8-HO	TYPE:	WEIGHT:
SPEC.:	DIM.:	SERIAL No.:2023111505
MFR.: JEWOO	SUR.:0.05m	PROTECTION ANGLE:

ρcc	80%			70%			50%			30%			10%			0
ρw	50%	30%	10%	50%	30%	10%	50%	30%	10%	50%	30%	10%	50%	30%	10%	0
ρfc	20%			20%			20%			20%			20%			0
RCR	RCR:Room Cavity Ratio															
	Coefficients of Utilization(CU)															
0.0	1.19	1.19	1.19	1.16	1.16	1.16	1.11	1.11	1.11	1.06	1.06	1.06	1.02	1.02	1.02	1.00
1.0	1.12	1.10	1.09	1.10	1.09	1.07	1.06	1.05	1.04	1.03	1.02	1.01	.99	.98	.98	.96
2.0	1.07	1.04	1.01	1.05	1.02	1.00	1.02	.99	.98	.99	.97	.96	.97	.95	.94	.92
3.0	1.02	.99	.96	1.01	.98	.95	.99	.96	.94	.96	.94	.92	.94	.92	.91	.89
4.0	.99	.95	.92	.98	.94	.91	.96	.92	.90	.94	.91	.89	.92	.90	.88	.87
5.0	.95	.91	.88	.95	.91	.88	.93	.90	.87	.91	.89	.86	.90	.88	.86	.85
6.0	.93	.88	.86	.92	.88	.85	.91	.87	.85	.89	.86	.84	.88	.86	.84	.83
7.0	.90	.86	.83	.90	.86	.83	.88	.85	.83	.87	.84	.82	.86	.84	.82	.81
8.0	.88	.84	.81	.87	.84	.81	.87	.83	.81	.86	.83	.80	.85	.82	.80	.79
9.0	.86	.82	.79	.86	.82	.79	.85	.81	.79	.84	.81	.79	.83	.81	.79	.78
10.0	.84	.80	.78	.84	.80	.78	.83	.80	.78	.83	.80	.77	.82	.79	.77	.76



C Range: 0 - 360DEG  
 C Interval: 5.0DEG  
 Test Speed: HIGH  
 Temperature:25.3DEG  
 Operators:HJL  
 Test Date:2023-11-15

γ Range: 0 - 90DEG  
 γ Interval: 0.5DEG  
 Test System:EVERFINE GO-2000H\_V1 SYSTEM V2.0.287  
 Humidity:65.0%  
 Test Distance:13.252m [K=1.0000]  
 Remarks: DC6.45V

WEC AND CCEC

Test:U:0.1164V I:0A P:0W PF:0 Lamp Flux:726.708x1 lm														
NAME: WM8-HO					TYPE:					WEIGHT:				
SPEC.:					DIM.:					SERIAL No.:2023111505				
MFR.: JEWOO					SUR.:0.05m					PROTECTION ANGLE:				

ρ <sub>CC</sub>	80%			70%			50%			30%			10%			0
ρ <sub>w</sub>	50%	30%	10%	50%	30%	10%	50%	30%	10%	50%	30%	10%	50%	30%	10%	0
ρ <sub>fc</sub>	20%			20%			20%			20%			20%			0
RCR	RCR:Room Cavity Ratio						Wall Exitance Coefficients(WEC)									
0.0																
1.0	.146	.083	.026	.139	.079	.025	.127	.073	.023	.115	.066	.021	.105	.061	.020	
2.0	.133	.073	.022	.128	.070	.022	.117	.065	.020	.108	.060	.019	.099	.056	.018	
3.0	.122	.065	.019	.117	.063	.019	.109	.059	.018	.101	.055	.017	.094	.052	.016	
4.0	.113	.058	.017	.109	.057	.017	.102	.054	.016	.095	.051	.015	.089	.048	.015	
5.0	.104	.053	.015	.101	.052	.015	.095	.049	.015	.089	.047	.014	.084	.045	.013	
6.0	.097	.049	.014	.095	.048	.014	.089	.046	.013	.084	.044	.013	.080	.042	.012	
7.0	.091	.045	.013	.089	.044	.013	.084	.043	.012	.080	.041	.012	.076	.040	.012	
8.0	.086	.042	.012	.084	.041	.012	.080	.040	.011	.076	.039	.011	.073	.037	.011	
9.0	.081	.039	.011	.079	.039	.011	.076	.038	.011	.073	.036	.010	.070	.035	.010	
10.0	.077	.037	.010	.075	.036	.010	.072	.035	.010	.069	.034	.010	.067	.034	.010	

ρ <sub>CC</sub>	80%			70%			50%			30%			10%			0
ρ <sub>w</sub>	50%	30%	10%	50%	30%	10%	50%	30%	10%	50%	30%	10%	50%	30%	10%	0
ρ <sub>fc</sub>	20%			20%			20%			20%			20%			0
RCR	RCR:Room Cavity Ratio						Ceiling Cavity Exitance Coefficients(CCEC)									
0.0	.190	.190	.190	.163	.163	.163	.111	.111	.111	.064	.064	.064	.020	.020	.020	
1.0	.169	.158	.147	.145	.135	.127	.099	.093	.088	.057	.054	.051	.018	.017	.016	
2.0	.151	.133	.117	.129	.114	.101	.089	.079	.071	.051	.046	.041	.016	.015	.014	
3.0	.136	.113	.095	.117	.098	.083	.080	.068	.058	.046	.040	.034	.015	.013	.011	
4.0	.123	.098	.079	.106	.085	.068	.073	.059	.048	.042	.035	.028	.014	.011	.009	
5.0	.112	.086	.066	.096	.074	.057	.066	.052	.040	.038	.030	.024	.012	.010	.008	
6.0	.103	.076	.056	.088	.065	.049	.061	.046	.034	.035	.027	.020	.011	.009	.007	
7.0	.095	.067	.048	.082	.058	.042	.056	.041	.030	.033	.024	.018	.011	.008	.006	
8.0	.088	.060	.041	.076	.052	.036	.052	.037	.026	.030	.022	.015	.010	.007	.005	
9.0	.082	.055	.036	.070	.047	.032	.049	.033	.022	.028	.020	.013	.009	.006	.004	
10.0	.076	.050	.032	.066	.043	.028	.046	.030	.020	.027	.018	.012	.009	.006	.004	

C Range: 0 - 360DEG  
 C Interval: 5.0DEG  
 Test Speed: HIGH  
 Temperature:25.3DEG  
 Operators:HJL  
 Test Date:2023-11-15

γ Range: 0 - 90DEG  
 γ Interval: 0.5DEG  
 Test System:EVERFINE GO-2000H\_V1 SYSTEM V2.0.287  
 Humidity:65.0%  
 Test Distance:13.252m [K=1.0000]  
 Remarks: DC6.45V

## UGR(Unified Glare Rating) Table

Test:U:0.1164V I:0A P:0W PF:0 Lamp Flux:726.708x1 lm										
NAME: WM8-HO					TYPE:			WEIGHT:		
SPEC.:					DIM.:			SERIAL No.:2023111505		
MFR.: JEWOO					SUR.:0.05m			PROTECTION ANGLE:		
ceiling/cavity	0.7	0.7	0.5	0.5	0.3	0.7	0.7	0.5	0.5	0.3
walls	0.5	0.3	0.5	0.3	0.3	0.5	0.3	0.5	0.3	0.3
working plane	0.2	0.2	0.2	0.2	0.2	0.2	0.2	0.2	0.2	0.2
Room dimensions	Viewed crosswise					Viewed endwise				
x = 2H y = 2H	15.3	15.9	15.5	16.1	16.2	15.7	16.3	15.9	16.5	16.6
3H	16.4	17.0	16.6	17.2	17.3	16.7	17.3	17.0	17.5	17.7
4H	16.7	17.3	16.9	17.5	17.7	17.3	17.9	17.6	18.1	18.3
6H	16.8	17.4	17.1	17.6	17.8	17.9	18.4	18.2	18.7	18.9
8H	16.8	17.3	17.1	17.6	17.8	18.2	18.7	18.5	19.0	19.2
12H	16.8	17.3	17.1	17.5	17.8	18.5	19.0	18.8	19.2	19.5
4H 2H	15.7	16.3	15.9	16.5	16.7	16.0	16.6	16.3	16.8	17.0
3H	16.9	17.4	17.2	17.6	17.9	17.1	17.7	17.4	17.9	18.2
4H	17.3	17.7	17.6	18.0	18.3	17.7	18.2	18.1	18.5	18.8
6H	17.5	17.9	17.8	18.2	18.6	18.4	18.9	18.8	19.2	19.5
8H	17.5	17.9	17.9	18.2	18.6	18.8	19.2	19.2	19.5	19.9
12H	17.5	17.8	17.9	18.2	18.6	19.2	19.5	19.6	19.9	20.3
8H 4H	17.4	17.8	17.8	18.1	18.5	17.8	18.2	18.2	18.6	18.9
6H	17.7	18.0	18.1	18.4	18.8	18.6	18.9	19.0	19.3	19.7
8H	17.8	18.1	18.2	18.5	18.9	19.0	19.3	19.5	19.8	20.2
12H	17.8	18.0	18.3	18.5	19.0	19.5	19.8	20.0	20.2	20.7
12H 4H	17.4	17.7	17.8	18.1	18.5	17.8	18.2	18.2	18.5	18.9
6H	17.7	18.0	18.2	18.4	18.9	18.6	18.9	19.1	19.3	19.8
8H	17.9	18.1	18.3	18.6	19.0	19.1	19.4	19.6	19.8	20.3
Variations with the observer position at spacings:										
S = 1.0H	+ 0.2 / - 0.3					+ 0.8 / - 0.5				
1.5H	+ 0.3 / - 0.4					+ 1.5 / - 0.7				
2.0H	+ 0.7 / - 0.7					+ 1.2 / - 0.9				

CIE Pub.117 Corrected 726.7 lm Total Lamp Luminous Flux. (8log(F/F0) = -1.1)

C Range: 0 - 360DEG  
C Interval: 5.0DEG  
Test Speed: HIGH  
Temperature:25.3DEG  
Operators:HJL  
Test Date:2023-11-15

$\gamma$  Range: 0 - 90DEG  
 $\gamma$  Interval: 0.5DEG  
Test System:EVERFINE GO-2000H\_V1 SYSTEM V2.0.287  
Humidity:65.0%  
Test Distance:13.252m [K=1.0000]  
Remarks: DC6.45V

## UTILIZATION FACTORS TABLE

Test:U:0.1164V I:0A P:0W PF:0 Lamp Flux:726.708x1 lm		
NAME: WMS-HO	TYPE:	WEIGHT:
SPEC.:	DIM.:	SERIAL No.:2023111505
MFR.: JEWOO	SUR.:0.05m	PROTECTION ANGLE:

REFLECTANCE										
Ceiling	0.8	0.8	0.8	0.7	0.7	0.7	0.5	0.5	0.5	0
Walls	0.7	0.5	0.3	0.7	0.5	0.3	0.7	0.5	0.3	0
Working plane	0.2	0.2	0.2	0.2	0.2	0.2	0.2	0.2	0.2	0
ROOM INDEX	UTILIZATION FACTORS (PERCENT) $k(RI) \times RCR = 5$									
k = 0.60	87	80	76	86	80	76	85	79	76	72
0.80	94	88	84	93	87	84	92	87	83	80
1.00	98	92	89	97	92	88	96	92	88	84
1.25	102	97	93	101	96	93	99	95	92	88
1.50	105	100	96	104	99	96	101	98	95	90
2.00	108	103	100	106	102	99	104	100	98	92
2.50	110	106	102	108	104	101	105	102	100	94
3.00	111	108	105	109	106	104	106	103	101	95
4.00	113	110	108	111	109	107	108	106	104	97
5.00	115	112	110	113	110	109	109	107	106	98
ROOM INDEX	UF(total)									Direct
According to DIN EN 13032-2 2004			Suspended				SHRNOM = 1.25			

C Range: 0 - 360DEG  
C Interval: 5.0DEG  
Test Speed: HIGH  
Temperature:25.3DEG  
Operators:HJL  
Test Date:2023-11-15

$\gamma$  Range: 0 - 90DEG  
 $\gamma$  Interval: 0.5DEG  
Test System:EVERFINE GO-2000H\_V1 SYSTEM V2.0.287  
Humidity:65.0%  
Test Distance:13.252m [K=1.0000]  
Remarks: DC6.45V

### ISOCANDELA DIAGRAM

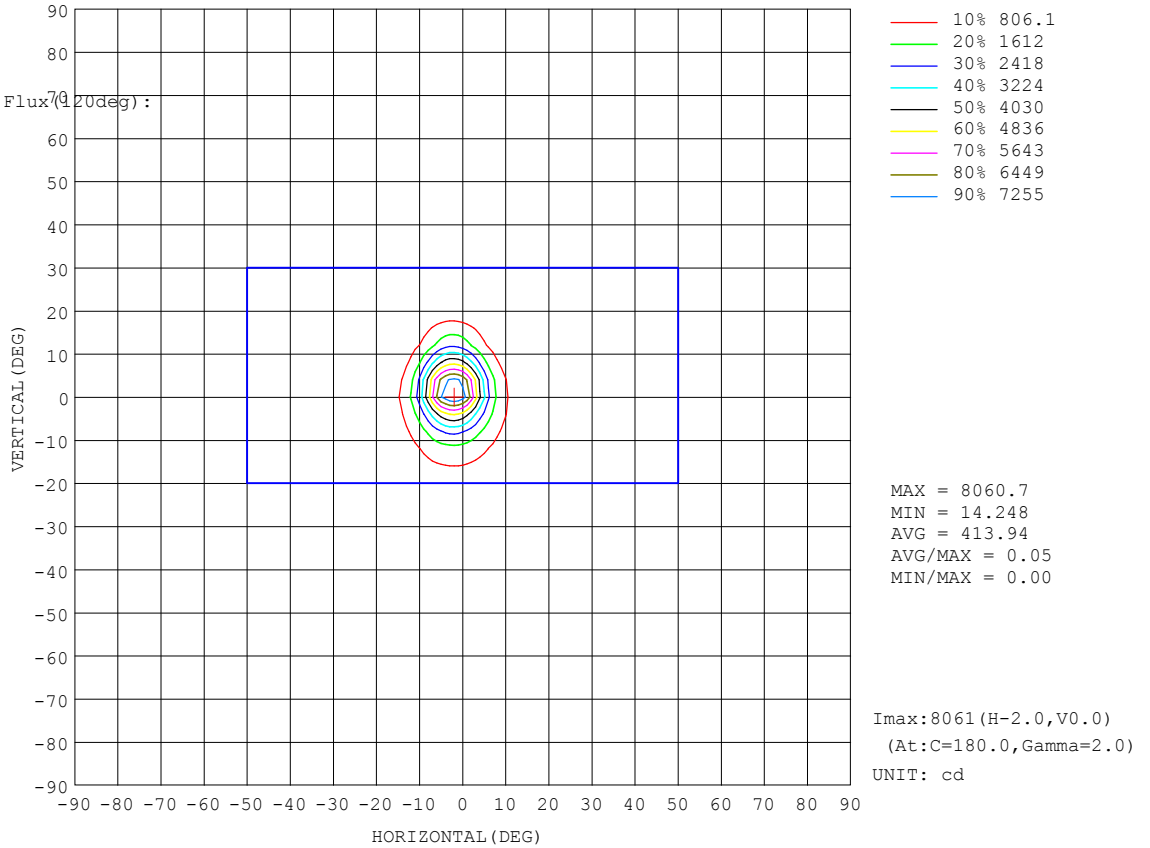
Test:U:0.1164V I:0A P:0W PF:0 Lamp Flux:726.708x1 lm		
NAME: WM8-HO	TYPE:	WEIGHT:
SPEC.:	DIM.:	SERIAL No.:2023111505
MFR.: JEWOO	SUR.:0.05m	PROTECTION ANGLE:

Conical surface Flux(90deg):

677.52 lm  
 %lum = 93.2%  
 %lamp = 93.2%

Conical surface Flux(20deg):

703.68 lm  
 %lum = 96.8%  
 %lamp = 96.8%

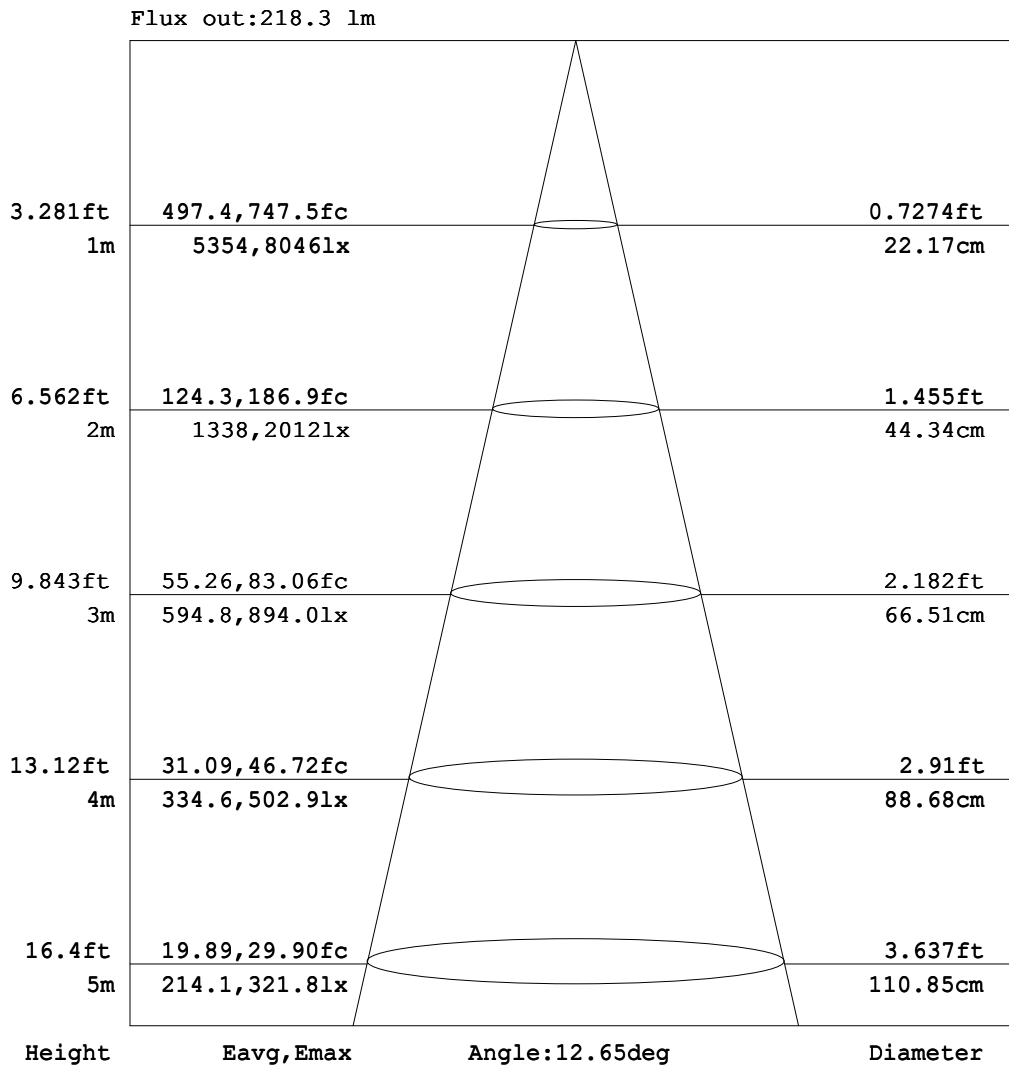


C Range: 0 - 360DEG  
 C Interval: 5.0DEG  
 Test Speed: HIGH  
 Temperature:25.3DEG  
 Operators:HJL  
 Test Date:2023-11-15

γ Range: 0 - 90DEG  
 γ Interval: 0.5DEG  
 Test System:EVERFINE GO-2000H\_V1 SYSTEM V2.0.287  
 Humidity:65.0%  
 Test Distance:13.252m [K=1.0000]  
 Remarks: DC6.45V

AAI Figure

Test:U:0.1164V I:0A P:0W PF:0 Lamp Flux:726.708x1 lm		
NAME: WM8-HO	TYPE:	WEIGHT:
SPEC.:	DIM.:	SERIAL No.:2023111505
MFR.: JEWOO	SUR.:0.05m	PROTECTION ANGLE:



Note:The Curves indicate the illuminated area and the average illumination when the luminaire is at different distance.

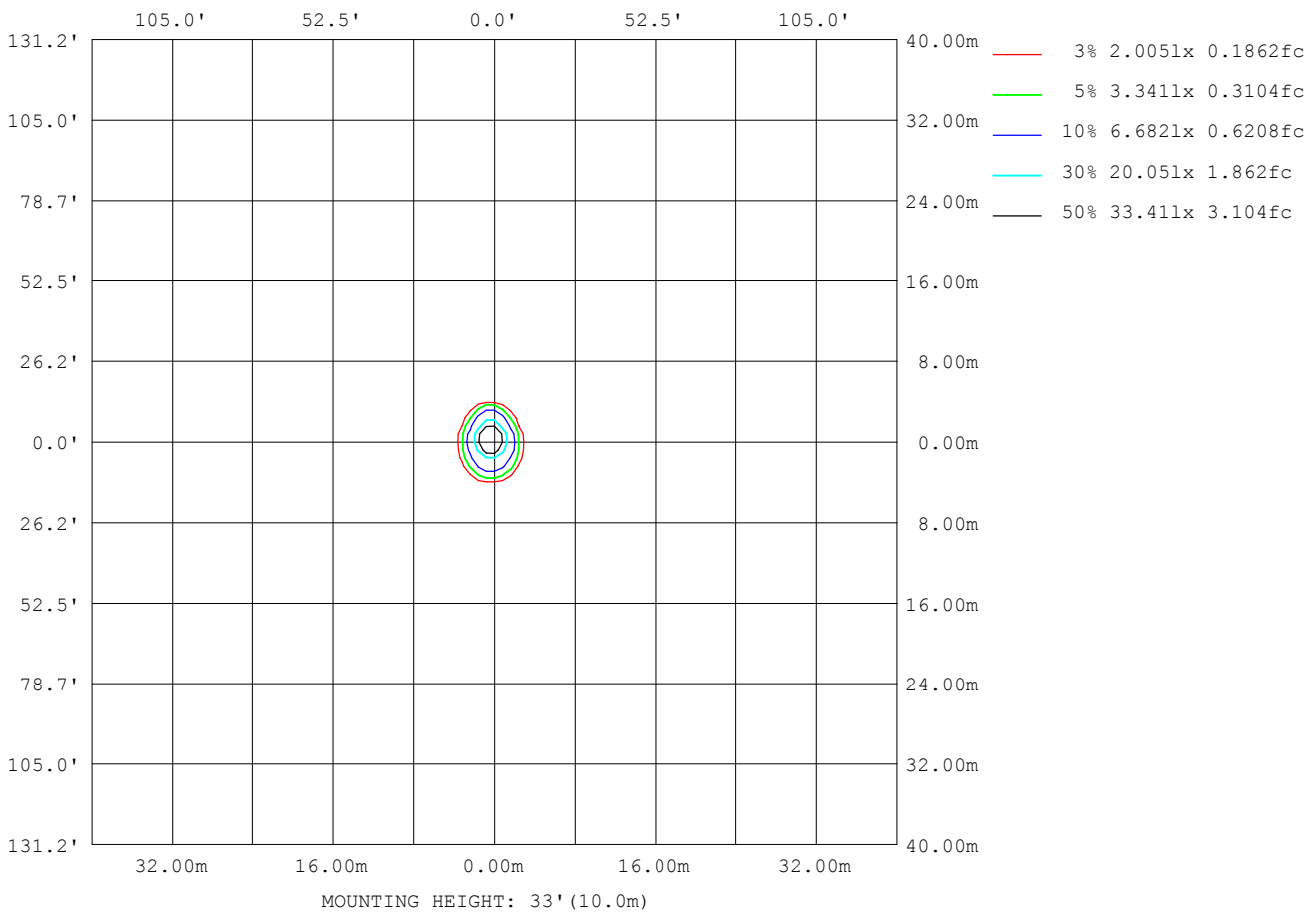
C Range: 0 - 360DEG  
 C Interval: 5.0DEG  
 Test Speed: HIGH  
 Temperature:25.3DEG  
 Operators:HJL  
 Test Date:2023-11-15

γ Range: 0 - 90DEG  
 γ Interval: 0.5DEG  
 Test System:EVERFINE GO-2000H\_V1 SYSTEM V2.0.287  
 Humidity:65.0%  
 Test Distance:13.252m [K=1.0000]  
 Remarks: DC6.45V



ISOLUX DIAGRAM

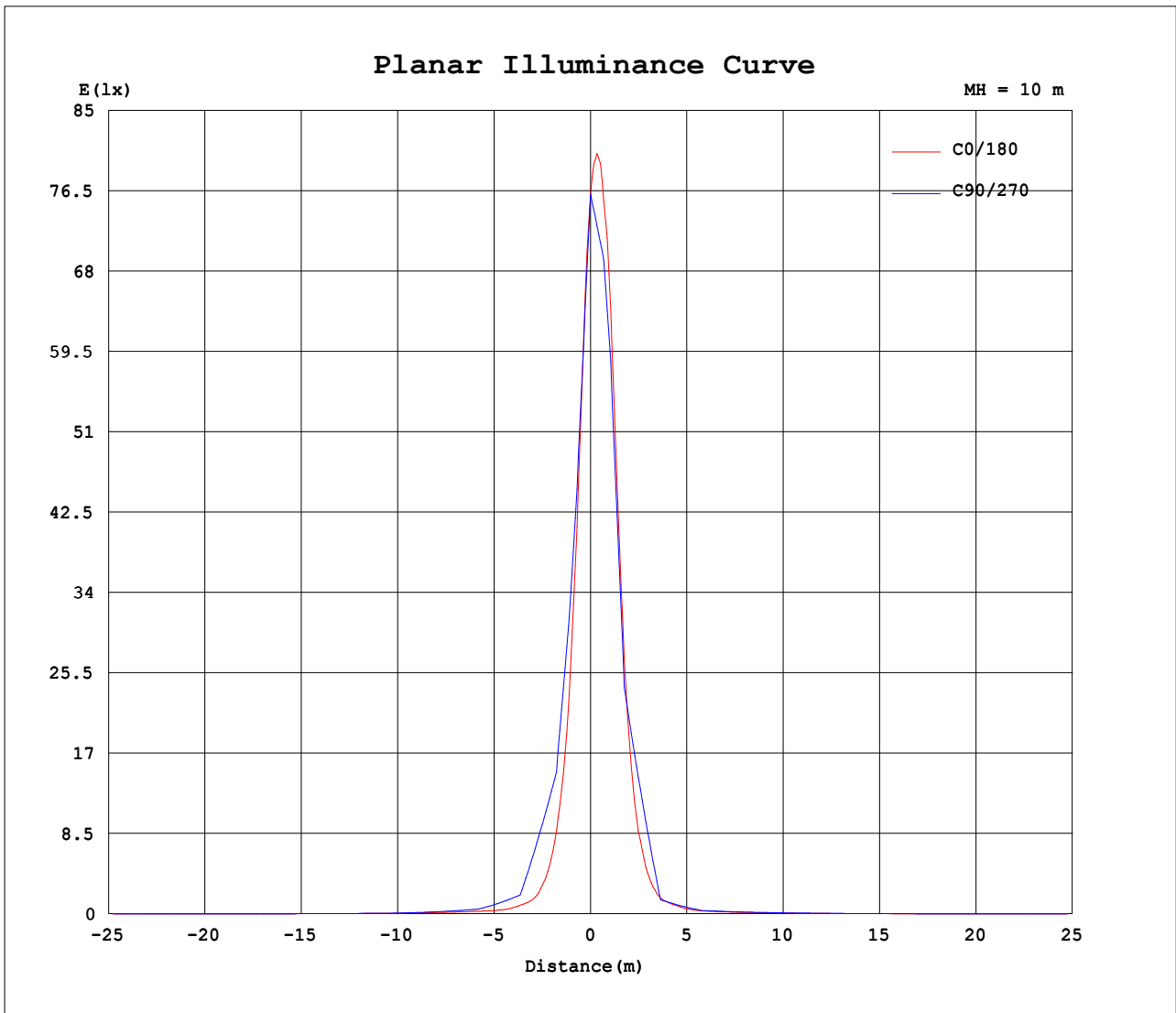
Test:U:0.1164V I:0A P:0W PF:0 Lamp Flux:726.708x1 lm		
NAME: WM8-HO	TYPE:	WEIGHT:
SPEC.:	DIM.:	SERIAL No.:2023111505
MFR.: JEWOO	SUR.:0.05m	PROTECTION ANGLE:



C Range: 0 - 360DEG  
 C Interval: 5.0DEG  
 Test Speed: HIGH  
 Temperature:25.3DEG  
 Operators:HJL  
 Test Date:2023-11-15

γ Range: 0 - 90DEG  
 γ Interval: 0.5DEG  
 Test System:EVERFINE GO-2000H\_V1 SYSTEM V2.0.287  
 Humidity:65.0%  
 Test Distance:13.252m [K=1.0000]  
 Remarks: DC6.45V

Planar Illuminance Curve



C Range: 0 - 360DEG  
 C Interval: 5.0DEG  
 Test Speed: HIGH  
 Temperature: 25.3DEG  
 Operators: HJL  
 Test Date: 2023-11-15

$\gamma$  Range: 0 - 90DEG  
 $\gamma$  Interval: 0.5DEG  
 Test System: EVERFINE GO-2000H\_V1 SYSTEM V2.0.287  
 Humidity: 65.0%  
 Test Distance: 13.252m [K=1.0000]  
 Remarks: DC6.45V

## LUMINOUS DISTRIBUTION INTENSITY DATA

Test:U:0.1164V I:0A P:0W PF:0 Lamp Flux:726.708x1 lm		
NAME: WMS-HO	TYPE:	WEIGHT:
SPEC.:	DIM.:	SERIAL No.:2023111505
MFR.: JEWOO	SUR.:0.05m	PROTECTION ANGLE:

Table--1

UNIT: cd

C (DEG) γ (DEG)	0	5	10	15	20	25	30	35	40	45	50	55	60	65	70	75	80	85	90
0	7616	7616	7616	7616	7616	7616	7616	7616	7616	7616	7616	7616	7616	7616	7616	7616	7616	7616	7616
5	3329	3229	3155	3105	3073	3058	3055	3062	3091	3134	3179	3238	3320	3410	3498	3596	3701	3804	3928
10	920	909	916	935	964	996	1034	1075	1120	1166	1221	1273	1325	1380	1425	1461	1490	1525	1576
15	251	253	264	281	298	323	347	378	407	441	485	536	592	648	706	765	815	863	910
20	113	109	108	107	108	112	123	136	153	170	192	214	234	251	259	255	245	241	245
25	59.0	57.1	55.8	54.6	53.8	53.8	55.6	58.9	62.1	65.7	68.3	76.2	91.3	108	125	138	146	155	163
30	46.2	44.5	43.3	42.3	41.8	41.6	41.6	41.6	41.0	41.0	42.6	47.3	53.9	61.8	69.9	76.2	78.2	79.6	81.3
35	38.1	36.3	34.8	33.5	32.4	31.7	32.1	33.1	33.0	32.3	31.9	32.9	36.2	40.4	46.1	52.7	58.3	61.3	63.7
40	31.7	29.7	28.8	27.9	27.0	26.4	26.2	25.9	25.8	25.2	25.6	26.3	28.0	30.8	34.1	38.3	42.5	44.4	46.1
45	25.3	24.6	25.3	24.3	23.7	22.5	21.7	22.1	22.4	21.3	21.2	21.4	22.3	23.4	24.9	26.2	28.1	29.0	29.9
50	22.7	21.4	22.2	21.4	20.4	18.7	17.7	18.0	18.4	18.0	17.4	17.4	17.8	18.8	19.6	20.6	22.2	23.2	24.2
55	19.3	18.8	18.2	18.1	16.1	15.2	14.7	14.7	15.0	15.1	14.3	14.4	14.6	15.6	16.0	16.5	17.8	18.7	19.9
60	15.7	15.2	14.5	13.4	12.3	11.8	11.9	11.7	11.9	12.2	12.1	11.7	11.8	12.4	12.8	12.6	13.6	14.2	15.6
65	10.7	10.3	10.0	9.46	8.54	8.79	8.69	9.00	8.84	8.74	9.14	9.25	9.05	9.00	9.55	9.49	10.2	10.9	13.0
70	6.20	6.78	7.79	7.33	5.89	5.94	6.25	6.23	6.21	6.25	6.09	6.29	5.84	5.57	5.93	6.56	6.94	7.56	10.5
75	3.24	3.65	4.74	4.36	3.84	4.10	3.84	4.25	4.23	4.11	3.97	3.83	3.71	3.79	4.19	5.00	5.30	5.83	8.07
80	1.50	1.57	2.01	2.33	2.21	2.30	2.34	2.70	2.80	2.90	2.93	2.85	2.78	2.84	3.08	3.65	3.82	4.17	5.67
85	0.46	0.38	0.57	0.86	0.96	1.22	1.36	1.64	1.77	1.86	1.89	1.87	1.86	1.91	2.03	2.32	2.36	2.53	3.27
90	0.02	0.19	0.23	0.23	0.27	0.38	0.52	0.63	0.78	0.85	0.85	0.88	0.94	1.00	1.00	1.00	0.93	0.91	0.87

C Range: 0 - 360DEG  
 C Interval: 5.0DEG  
 Test Speed: HIGH  
 Temperature:25.3DEG  
 Operators:HJL  
 Test Date:2023-11-15

γ Range: 0 - 90DEG  
 γ Interval: 0.5DEG  
 Test System:EVERFINE GO-2000H\_V1 SYSTEM V2.0.287  
 Humidity:65.0%  
 Test Distance:13.252m [K=1.0000]  
 Remarks: DC6.45V

LUMINOUS DISTRIBUTION INTENSITY DATA

Test:U:0.1164V I:0A P:0W PF:0 Lamp Flux:726.708x1 lm		
NAME: WM8-HO	TYPE:	WEIGHT:
SPEC.:	DIM.:	SERIAL No.:2023111505
MFR.: JEWOO	SUR.:0.05m	PROTECTION ANGLE:

Table--2

UNIT: cd

γ (DEG)	C (DEG)																		
	95	100	105	110	115	120	125	130	135	140	145	150	155	160	165	170	175	180	185
0	7616	7616	7616	7616	7616	7616	7616	7616	7616	7616	7616	7616	7616	7616	7616	7616	7616	7616	7616
5	4035	4165	4282	4405	4536	4647	4779	4921	5076	5251	5437	5634	5853	6091	6349	6625	6918	7226	7166
10	1632	1703	1790	1888	1987	2077	2142	2185	2208	2214	2229	2269	2297	2361	2439	2531	2651	2816	2790
15	944	968	984	991	984	960	920	868	815	781	774	754	739	719	711	710	726	760	736
20	258	286	325	365	390	396	384	360	331	307	288	274	254	236	223	214	206	205	204
25	165	166	168	165	158	144	123	105	109	110	109	105	99.7	95.9	95.7	96.3	97.4	102	102
30	80.0	78.4	77.3	75.9	73.8	68.2	59.5	53.3	50.3	48.8	51.1	51.0	50.4	50.5	51.2	52.1	53.0	54.1	54.6
35	61.6	56.9	49.2	42.1	38.4	38.0	39.0	38.2	36.4	36.7	38.8	40.3	39.8	40.2	40.7	40.6	40.9	41.5	41.7
40	45.0	41.8	36.9	33.1	32.0	32.8	31.6	28.8	27.9	29.0	30.1	30.9	30.7	31.3	32.4	32.7	33.1	33.7	33.4
45	29.8	28.7	27.2	26.4	26.6	26.8	25.6	24.9	24.5	24.3	24.2	24.9	25.3	26.0	27.0	27.9	29.1	30.1	29.7
50	24.2	23.3	22.7	22.4	22.4	22.3	22.2	22.0	21.9	21.8	21.9	22.2	22.5	22.7	23.5	24.6	25.8	26.1	25.7
55	19.9	19.3	19.4	19.5	19.8	20.0	19.9	19.6	19.6	19.7	19.8	19.9	20.1	20.7	21.8	21.5	21.7	22.7	21.9
60	15.7	15.4	16.4	16.8	17.5	17.9	17.6	17.1	17.2	17.3	17.6	17.6	17.6	17.9	18.4	18.6	18.4	18.1	18.0
65	12.4	12.3	12.8	13.2	14.1	15.0	15.3	14.9	14.3	14.3	14.5	14.9	15.0	15.6	15.3	15.4	15.3	15.2	15.0
70	9.09	9.16	8.94	9.10	9.22	10.2	10.6	10.8	11.0	11.1	11.1	11.0	11.3	11.5	12.1	12.4	12.4	12.5	12.3
75	6.98	6.94	6.66	6.54	6.27	6.79	6.84	6.67	7.00	7.68	7.25	7.15	7.43	7.82	8.30	8.49	8.81	9.14	9.12
80	4.90	4.80	4.62	4.49	4.35	4.71	4.65	4.66	4.74	5.11	4.19	3.83	4.02	4.29	4.52	4.87	5.13	5.27	5.34
85	2.83	2.70	2.58	2.48	2.43	2.61	2.55	2.59	2.61	2.74	2.32	2.16	2.10	2.00	1.76	1.75	2.10	2.16	2.46
90	0.76	0.61	0.54	0.49	0.49	0.49	0.49	0.49	0.49	0.52	0.55	0.60	0.66	0.66	0.66	0.63	0.37	0.03	1.98

C Range: 0 - 360DEG      γ Range: 0 - 90DEG  
 C Interval: 5.0DEG        γ Interval: 0.5DEG  
 Test Speed: HIGH          Test System:EVERFINE GO-2000H\_V1 SYSTEM V2.0.287  
 Temperature:25.3DEG      Humidity:65.0%  
 Operators:HJL              Test Distance:13.252m [K=1.0000]  
 Test Date:2023-11-15      Remarks: DC6.45V

LUMINOUS DISTRIBUTION INTENSITY DATA

Test:U:0.1164V I:0A P:0W PF:0 Lamp Flux:726.708x1 lm		
NAME: WM8-HO	TYPE:	WEIGHT:
SPEC.:	DIM.:	SERIAL No.:2023111505
MFR.: JEWOO	SUR.:0.05m	PROTECTION ANGLE:

Table--3

UNIT: cd

C (DEG) γ (DEG)	190	195	200	205	210	215	220	225	230	235	240	245	250	255	260	265	270	275	280
0	7616	7616	7616	7616	7616	7616	7616	7616	7616	7616	7616	7616	7616	7616	7616	7616	7616	7616	7616
5	7122	7094	7084	7093	7120	7167	7211	7253	7302	7294	7200	7122	7009	6892	6767	6601	6454	6227	6020
10	2824	2917	3068	3231	3378	3554	3631	3645	3614	3558	3482	3367	3226	3063	2884	2696	2508	2314	2145
15	732	747	753	774	775	786	778	833	930	1061	1211	1360	1482	1547	1538	1465	1345	1178	1004
20	209	215	224	228	229	247	269	293	322	357	378	391	379	335	270	211	183	180	191
25	104	106	110	113	112	110	110	114	114	117	122	130	133	135	134	129	120	109	102
30	55.3	54.9	55.1	55.9	56.8	56.5	53.2	57.1	62.8	67.7	69.7	68.8	69.0	67.9	65.3	61.3	57.1	53.8	52.6
35	41.8	42.0	41.7	42.3	42.6	40.6	39.5	40.1	42.2	41.2	40.4	40.8	43.2	48.1	51.4	51.9	49.7	45.7	42.2
40	33.2	32.9	32.7	32.3	31.7	31.8	30.6	30.0	31.6	33.9	33.6	33.4	34.5	38.1	42.0	43.2	42.4	38.6	35.3
45	28.7	27.6	26.7	26.1	25.6	24.5	24.7	24.9	25.4	26.4	27.1	26.6	27.0	29.0	33.0	34.9	35.4	31.9	28.8
50	24.7	23.3	22.3	21.8	21.4	21.3	21.2	21.1	21.1	21.1	21.6	22.1	23.0	24.9	28.5	30.4	30.9	27.8	25.1
55	21.1	21.2	19.8	18.8	18.5	18.6	18.5	18.3	18.5	18.8	19.7	20.4	20.9	22.2	25.2	26.5	26.7	24.3	22.0
60	17.7	17.2	16.3	16.3	16.3	16.3	16.2	16.2	16.5	17.3	17.7	18.7	19.0	19.9	22.2	22.7	22.5	20.9	19.2
65	14.8	14.6	14.2	13.7	13.8	13.9	13.9	14.2	14.6	15.7	15.6	16.6	16.7	16.6	18.3	18.7	18.2	16.2	15.0
70	12.3	12.1	11.8	11.3	11.3	11.6	11.8	12.0	12.6	12.9	13.0	14.0	14.1	13.3	14.3	14.8	13.8	11.6	10.7
75	9.03	8.95	8.82	8.89	9.03	9.35	9.74	10.2	10.5	10.5	10.3	10.8	11.2	10.5	11.2	11.7	11.0	9.27	8.58
80	5.44	5.49	5.76	6.11	6.21	6.87	7.41	7.57	7.73	7.76	7.64	7.87	8.22	7.82	8.27	8.64	8.14	7.00	6.57
85	2.76	3.34	3.81	4.02	4.09	4.41	4.85	4.92	5.01	5.01	4.95	5.04	5.25	5.09	5.35	5.57	5.32	4.76	4.57
90	2.06	2.07	2.10	2.10	2.11	2.18	2.28	2.34	2.32	2.27	2.27	2.27	2.27	2.36	2.45	2.51	2.51	2.53	2.59

C Range: 0 - 360DEG      γ Range: 0 - 90DEG  
 C Interval: 5.0DEG      γ Interval: 0.5DEG  
 Test Speed: HIGH      Test System:EVERFINE GO-2000H\_V1 SYSTEM V2.0.287  
 Temperature:25.3DEG      Humidity:65.0%  
 Operators:HJL      Test Distance:13.252m [K=1.0000]  
 Test Date:2023-11-15      Remarks: DC6.45V

LUMINOUS DISTRIBUTION INTENSITY DATA

Test:U:0.1164V I:0A P:0W PF:0 Lamp Flux:726.708x1 lm		
NAME: WM8-HO	TYPE:	WEIGHT:
SPEC.:	DIM.:	SERIAL No.:2023111505
MFR.: JEWOO	SUR.:0.05m	PROTECTION ANGLE:

Table--4

UNIT: cd

C (DEG) γ (DEG)	285	290	295	300	305	310	315	320	325	330	335	340	345	350	355				
0	7616	7616	7616	7616	7616	7616	7616	7616	7616	7616	7616	7616	7616	7616	7616				
5	5782	5540	5306	5063	4836	4574	4301	4052	3840	3675	3540	3436	3362	3320	3309				
10	1995	1857	1720	1583	1475	1375	1278	1214	1141	1073	1017	979	942	918	910				
15	836	690	578	492	425	371	325	297	295	290	284	272	265	254	249				
20	202	207	202	189	170	152	135	125	123	123	122	120	118	116	113				
25	100	99.5	95.4	87.4	76.3	66.1	65.7	67.3	66.1	63.2	61.0	60.5	60.5	60.5	59.4				
30	53.6	55.1	55.3	51.2	46.1	43.0	41.6	41.5	43.6	44.7	44.8	45.1	46.0	46.5	46.4				
35	39.9	38.6	36.3	35.3	33.5	32.6	32.9	34.7	34.8	34.1	35.2	36.5	38.4	38.9	38.7				
40	33.1	31.6	30.1	28.5	26.9	25.9	25.4	25.8	26.6	27.2	27.7	29.2	30.9	32.0	32.4				
45	26.6	25.2	24.1	22.7	21.7	21.3	21.1	21.2	21.5	21.7	22.5	23.5	24.7	25.6	26.0				
50	22.9	21.3	19.7	18.1	17.5	17.3	17.4	17.4	17.4	18.0	19.1	19.9	21.0	21.6	21.5				
55	20.0	18.6	17.2	15.6	14.9	14.4	13.9	13.9	14.3	14.8	15.1	15.7	17.1	17.3	18.0				
60	17.3	16.2	14.7	13.3	12.7	12.0	11.6	11.2	11.7	11.5	11.3	11.8	12.7	13.4	14.7				
65	13.5	12.9	11.7	11.0	10.5	9.86	9.42	9.38	9.26	8.27	8.36	8.62	9.17	9.55	11.9				
70	9.48	9.15	8.58	8.35	7.99	7.70	7.60	7.66	7.09	6.59	6.10	6.35	7.10	7.12	6.89				
75	7.51	7.16	6.62	6.34	6.01	5.86	5.91	5.82	5.42	5.16	4.73	4.81	4.28	4.77	3.66				
80	5.85	5.64	5.24	5.04	4.81	4.74	4.60	4.40	4.09	3.82	3.33	3.20	2.74	2.00	1.67				
85	4.21	4.12	3.91	3.79	3.66	3.60	3.44	3.29	3.02	2.79	2.39	2.06	1.73	1.29	0.56				
90	2.59	2.59	2.59	2.56	2.54	2.46	2.31	2.26	2.03	1.82	1.64	1.50	1.38	1.29	1.17				

C Range: 0 - 360DEG      γ Range: 0 - 90DEG  
 C Interval: 5.0DEG      γ Interval: 0.5DEG  
 Test Speed: HIGH      Test System:EVERFINE GO-2000H\_V1 SYSTEM V2.0.287  
 Temperature:25.3DEG      Humidity:65.0%  
 Operators:HJL      Test Distance:13.252m [K=1.0000]  
 Test Date:2023-11-15      Remarks: DC6.45V