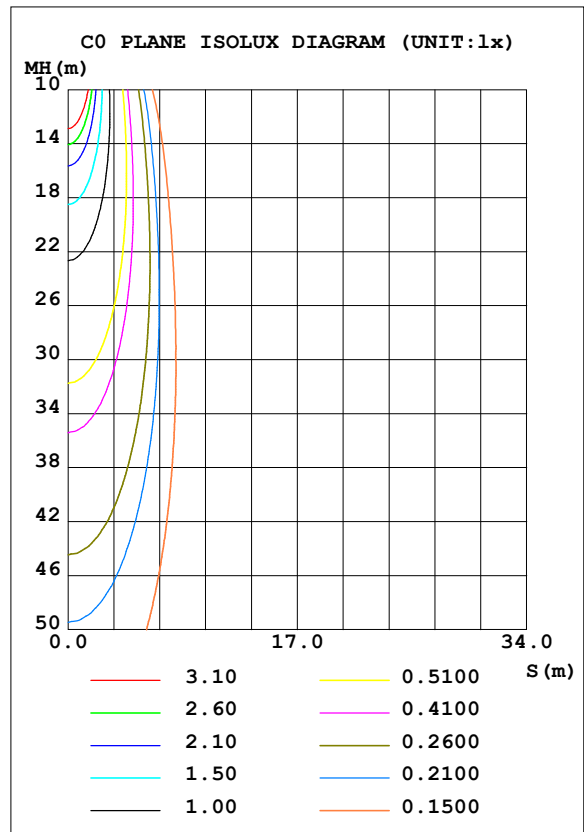
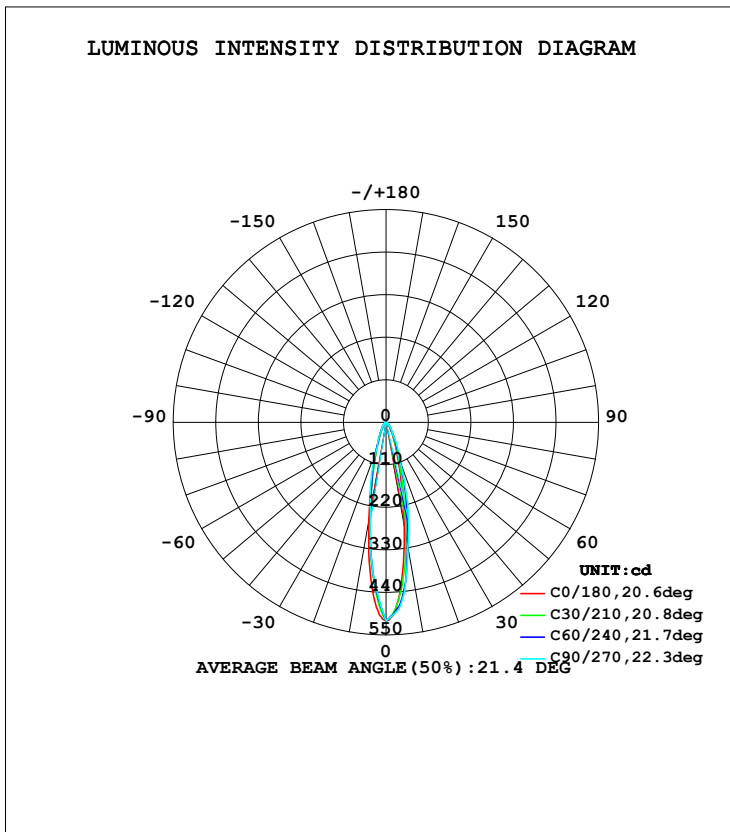


LUMINAIRE PHOTOMETRIC TEST REPORT

| | | |
|--|--------------|-----------------------|
| Test:U:3.950V I:0.3550A P:0W PF:0 Lamp Flux:131.533x1 lm | | |
| NAME: M3 (M2 M5) (3.95V 355mA) TYPE: | | WEIGHT: |
| SPEC.: | DIM.: | SERIAL No.:2018081102 |
| MFR.: JEWOO | SUR.:0.00212 | PROTECTION ANGLE: |

| DATA OF LAMP | | PHOTOMETRIC DATA | | | |
|------------------------------|---------|-----------------------|--------|---------------------|-----------|
| MODEL(M2U M5U) (3.95V 355mA) | | I _{max} (cd) | 514.0 | S/MH (C0/180) | 0.34 |
| NOMINAL POWER (W) | | LOR (%) | 100.0 | S/MH (C90/270) | 0.32 |
| RATED VOLTAGE (V) | 3.95 | TOTAL FLUX (lm) | 131.53 | η UP, DN (C0-180) | 0.0, 54.5 |
| NOMINAL FLUX (lm) | 131.533 | CIE CLASS | DIRECT | η UP, DN (C180-360) | 0.0, 45.5 |
| LAMPS INSIDE | 1 | η up (%) | 0.0 | CIBSE SHR NOM | 0.00 |
| TEST VOLTAGE (V) | 3.95 | η down (%) | 100.0 | CIBSE SHR MAX | 1.00 |



C Range: 0 - 360DEG
 C Interval: 5.0DEG
 Test Speed: HIGH
 Temperature: 25.3DEG
 Operators: WLM
 Test Date: 2018-08-11

γ Range: 0 - 90DEG
 γ Interval: 0.5DEG
 Test System: EVERFINE GO-2000H_V1 SYSTEM V2.0.287
 Humidity: 65.0%
 Test Distance: 13.824m [K=1.0000]
 Remarks: 单灯

ZONAL FLUX DIAGRAM

ZONAL FLUX DIAGRAM:

| γ | C0 | C45 | C90 | C135 | C180 | C225 | C270 | C315 | γ | Φ zone | Φ total | %lum, lamp |
|-----|-----------------------|--------|--------|--------|--------|--------|--------|--------|---------|--------|---------|------------|
| 5 | 433.9 | 451.8 | 465.6 | 439.3 | 426.2 | 391.3 | 389.6 | 395.6 | 0- 5 | 10.98 | 10.98 | 8.35,8.35 |
| 10 | 273.2 | 312.6 | 328.6 | 287.4 | 258.1 | 238.9 | 231.0 | 245.4 | 5- 10 | 24.27 | 35.24 | 26.8,26.8 |
| 15 | 148.1 | 181.7 | 214.6 | 158.9 | 133.4 | 127.9 | 149.1 | 132.9 | 10- 15 | 24.33 | 59.58 | 45.3,45.3 |
| 20 | 80.59 | 100.6 | 100.5 | 86.58 | 70.75 | 72.37 | 67.17 | 76.95 | 15- 20 | 18.94 | 78.51 | 59.7,59.7 |
| 25 | 47.72 | 55.97 | 67.44 | 48.56 | 41.80 | 41.55 | 46.20 | 44.28 | 20- 25 | 13.17 | 91.69 | 69.7,69.7 |
| 30 | 29.78 | 34.37 | 34.39 | 30.30 | 26.53 | 26.26 | 25.23 | 27.76 | 25- 30 | 9.722 | 101.4 | 77.1,77.1 |
| 35 | 18.58 | 21.75 | 26.31 | 20.00 | 17.98 | 17.83 | 19.63 | 18.25 | 30- 35 | 7.078 | 108.5 | 82.5,82.5 |
| 40 | 12.56 | 13.84 | 18.23 | 13.63 | 12.82 | 12.40 | 14.02 | 12.17 | 35- 40 | 5.537 | 114.0 | 86.7,86.7 |
| 45 | 8.799 | 10.10 | 10.75 | 10.23 | 9.412 | 9.359 | 8.818 | 9.000 | 40- 45 | 4.296 | 118.3 | 90,90 |
| 50 | 6.496 | 7.332 | 8.177 | 7.550 | 6.967 | 6.988 | 6.870 | 6.598 | 45- 50 | 3.302 | 121.6 | 92.5,92.5 |
| 55 | 5.034 | 5.359 | 6.210 | 5.536 | 5.239 | 5.198 | 5.330 | 4.829 | 50- 55 | 2.683 | 124.3 | 94.5,94.5 |
| 60 | 4.027 | 4.267 | 4.244 | 4.258 | 3.961 | 3.989 | 3.789 | 3.860 | 55- 60 | 2.177 | 126.5 | 96.2,96.2 |
| 65 | 3.204 | 3.357 | 3.313 | 3.128 | 2.932 | 2.896 | 2.815 | 3.035 | 60- 65 | 1.727 | 128.2 | 97.5,97.5 |
| 70 | 2.383 | 2.462 | 2.382 | 2.181 | 2.054 | 2.039 | 1.840 | 2.164 | 65- 70 | 1.329 | 129.5 | 98.5,98.5 |
| 75 | 1.072 | 1.516 | 1.794 | 1.436 | 1.200 | 1.365 | 1.426 | 1.195 | 70- 75 | 0.9376 | 130.5 | 99.2,99.2 |
| 80 | 0.3043 | 0.9765 | 1.207 | 0.9295 | 0.5412 | 0.9337 | 1.012 | 0.7882 | 75- 80 | 0.5828 | 131.1 | 99.6,99.6 |
| 85 | 0.0325 | 0.5006 | 0.6198 | 0.4720 | 0.1188 | 0.5573 | 0.5981 | 0.4834 | 80- 85 | 0.3300 | 131.4 | 99.9,99.9 |
| 90 | 0.0216 | 0.0325 | 0.0325 | 0.0325 | 0.0305 | 0.1949 | 0.1840 | 0.1840 | 85- 90 | 0.1442 | 131.5 | 100,100 |
| 95 | | | | | | | | | 90- 95 | | | |
| 100 | | | | | | | | | 95-100 | | | |
| 105 | | | | | | | | | 100-105 | | | |
| 110 | | | | | | | | | 105-110 | | | |
| 115 | | | | | | | | | 110-115 | | | |
| 120 | | | | | | | | | 115-120 | | | |
| 125 | | | | | | | | | 120-125 | | | |
| 130 | | | | | | | | | 125-130 | | | |
| 135 | | | | | | | | | 130-135 | | | |
| 140 | | | | | | | | | 135-140 | | | |
| 145 | | | | | | | | | 140-145 | | | |
| 150 | | | | | | | | | 145-150 | | | |
| 155 | | | | | | | | | 150-155 | | | |
| 160 | | | | | | | | | 155-160 | | | |
| 165 | | | | | | | | | 160-165 | | | |
| 170 | | | | | | | | | 165-170 | | | |
| 175 | | | | | | | | | 170-175 | | | |
| 180 | | | | | | | | | 175-180 | | | |
| DEG | LUMINOUS INTENSITY:cd | | | | | | | | UNIT:lm | | | |

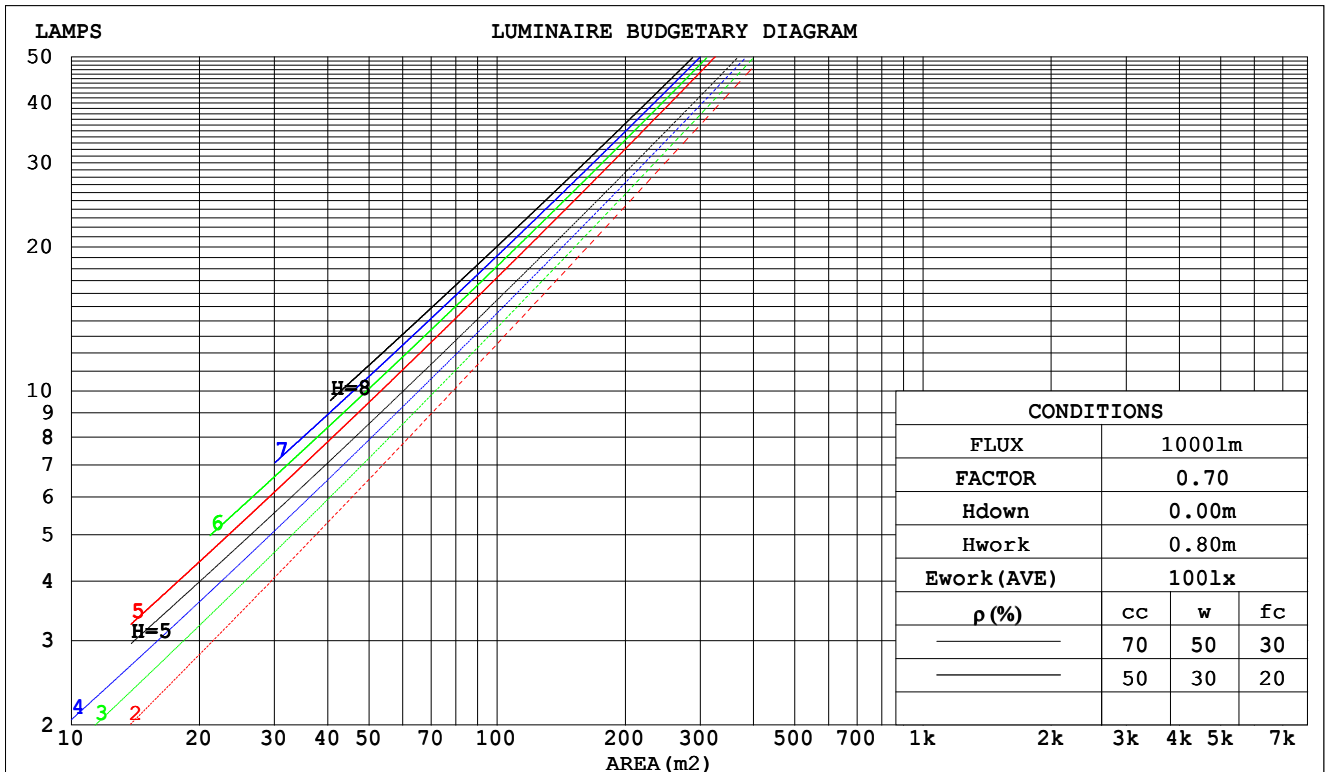
C Range: 0 - 360DEG
 C Interval: 5.0DEG
 Test Speed: HIGH
 Temperature:25.3DEG
 Operators:WLM
 Test Date:2018-08-11

γ Range: 0 - 90DEG
 γ Interval: 0.5DEG
 Test System:EVERFINE GO-2000H_V1 SYSTEM V2.0.287
 Humidity:65.0%
 Test Distance:13.824m [K=1.0000]
 Remarks: 单灯

CU AND LUMINAIRE BUDGETARY ESTIMATE DIAGRAM

| | | |
|--|--------------|-----------------------|
| Test:U:3.950V I:0.3550A P:0W PF:0 Lamp Flux:131.533x1 lm | | |
| NAME: M3U(M2U M5U) (3.95V 355mA) | TYPE: | WEIGHT: |
| SPEC.: | DIM.: | SERIAL No.:2018081102 |
| MFR.: JEWOO | SUR.:0.00212 | PROTECTION ANGLE: |

| | | | | | | | | | | | | | | | | |
|-------------|-----------------------|------|------|------|------|------|---------------------------------|------|------|------|------|------|------|------|------|------|
| ρ_{cc} | 80% | | | 70% | | | 50% | | | 30% | | | 10% | | | 0 |
| ρ_w | 50% | 30% | 10% | 50% | 30% | 10% | 50% | 30% | 10% | 50% | 30% | 10% | 50% | 30% | 10% | 0 |
| ρ_{fc} | 20% | | | 20% | | | 20% | | | 20% | | | 20% | | | 0 |
| RCR | RCR:Room Cavity Ratio | | | | | | Coefficients of Utilization(CU) | | | | | | | | | |
| 0.0 | 1.19 | 1.19 | 1.19 | 1.16 | 1.16 | 1.16 | 1.11 | 1.11 | 1.11 | 1.06 | 1.06 | 1.06 | 1.02 | 1.02 | 1.02 | 1.00 |
| 1.0 | 1.11 | 1.08 | 1.06 | 1.09 | 1.07 | 1.05 | 1.05 | 1.03 | 1.01 | 1.01 | .99 | .98 | .98 | .96 | .95 | .94 |
| 2.0 | 1.04 | .99 | .97 | 1.02 | .98 | .95 | .99 | .96 | .93 | .96 | .93 | .91 | .93 | .91 | .90 | .88 |
| 3.0 | .97 | .93 | .89 | .96 | .92 | .88 | .94 | .90 | .87 | .91 | .88 | .86 | .89 | .86 | .84 | .83 |
| 4.0 | .92 | .87 | .83 | .91 | .86 | .83 | .89 | .85 | .82 | .87 | .83 | .81 | .85 | .82 | .80 | .78 |
| 5.0 | .87 | .82 | .78 | .86 | .82 | .78 | .85 | .80 | .77 | .83 | .79 | .76 | .82 | .78 | .76 | .74 |
| 6.0 | .83 | .78 | .74 | .82 | .77 | .74 | .81 | .77 | .73 | .80 | .76 | .73 | .78 | .75 | .72 | .71 |
| 7.0 | .80 | .74 | .70 | .79 | .74 | .70 | .78 | .73 | .70 | .77 | .73 | .70 | .75 | .72 | .69 | .68 |
| 8.0 | .76 | .71 | .67 | .76 | .71 | .67 | .75 | .70 | .67 | .74 | .70 | .67 | .73 | .69 | .66 | .65 |
| 9.0 | .73 | .68 | .65 | .73 | .68 | .64 | .72 | .67 | .64 | .71 | .67 | .64 | .70 | .67 | .64 | .63 |
| 10.0 | .71 | .66 | .62 | .70 | .65 | .62 | .69 | .65 | .62 | .69 | .65 | .62 | .68 | .64 | .62 | .60 |



C Range: 0 - 360DEG
 C Interval: 5.0DEG
 Test Speed: HIGH
 Temperature:25.3DEG
 Operators:WLM
 Test Date:2018-08-11

γ Range: 0 - 90DEG
 γ Interval: 0.5DEG
 Test System:EVERFINE GO-2000H_V1 SYSTEM V2.0.287
 Humidity:65.0%
 Test Distance:13.824m [K=1.0000]
 Remarks: 单灯

WEC AND CCEC

| | | |
|--|--------------|-----------------------|
| Test:U:3.950V I:0.3550A P:0W PF:0 Lamp Flux:131.533x1 lm | | |
| NAME: M3U(M2U M5U) (3.95V 355mA) | TYPE: | WEIGHT: |
| SPEC.: | DIM.: | SERIAL No.:2018081102 |
| MFR.: JEWOO | SUR.:0.00212 | PROTECTION ANGLE: |

| ρ_{CC} | 80% | | | 70% | | | 50% | | | 30% | | | 10% | | | 0 |
|-------------|-----------------------|------|------|------|------|------|---------------------------------|------|------|------|------|------|------|------|------|---|
| ρ_w | 50% | 30% | 10% | 50% | 30% | 10% | 50% | 30% | 10% | 50% | 30% | 10% | 50% | 30% | 10% | 0 |
| ρ_{fc} | 20% | | | 20% | | | 20% | | | 20% | | | 20% | | | 0 |
| RCR | RCR:Room Cavity Ratio | | | | | | Wall Exitance Coefficients(WEC) | | | | | | | | | |
| 0.0 | | | | | | | | | | | | | | | | |
| 1.0 | .175 | .100 | .032 | .168 | .096 | .031 | .156 | .089 | .029 | .144 | .083 | .027 | .134 | .077 | .025 | |
| 2.0 | .164 | .090 | .028 | .159 | .088 | .027 | .148 | .082 | .026 | .139 | .078 | .024 | .130 | .073 | .023 | |
| 3.0 | .154 | .082 | .025 | .149 | .080 | .024 | .140 | .076 | .023 | .132 | .072 | .022 | .124 | .069 | .021 | |
| 4.0 | .144 | .075 | .022 | .140 | .073 | .022 | .132 | .070 | .021 | .125 | .067 | .020 | .119 | .064 | .020 | |
| 5.0 | .135 | .069 | .020 | .132 | .068 | .020 | .125 | .065 | .019 | .119 | .063 | .019 | .113 | .061 | .018 | |
| 6.0 | .127 | .064 | .018 | .124 | .063 | .018 | .119 | .061 | .018 | .113 | .059 | .017 | .108 | .057 | .017 | |
| 7.0 | .120 | .060 | .017 | .118 | .059 | .017 | .113 | .057 | .016 | .108 | .055 | .016 | .104 | .054 | .016 | |
| 8.0 | .114 | .056 | .016 | .112 | .055 | .016 | .107 | .054 | .015 | .103 | .052 | .015 | .099 | .051 | .015 | |
| 9.0 | .109 | .052 | .015 | .106 | .052 | .015 | .102 | .051 | .014 | .099 | .049 | .014 | .095 | .048 | .014 | |
| 10.0 | .103 | .050 | .014 | .102 | .049 | .014 | .098 | .048 | .014 | .095 | .047 | .013 | .091 | .046 | .013 | |

| ρ_{CC} | 80% | | | 70% | | | 50% | | | 30% | | | 10% | | | 0 |
|-------------|-----------------------|------|------|------|------|------|--|------|------|------|------|------|------|------|------|---|
| ρ_w | 50% | 30% | 10% | 50% | 30% | 10% | 50% | 30% | 10% | 50% | 30% | 10% | 50% | 30% | 10% | 0 |
| ρ_{fc} | 20% | | | 20% | | | 20% | | | 20% | | | 20% | | | 0 |
| RCR | RCR:Room Cavity Ratio | | | | | | Ceiling Cavity Exitance Coefficients(CCEC) | | | | | | | | | |
| 0.0 | .190 | .190 | .190 | .163 | .163 | .163 | .111 | .111 | .111 | .064 | .064 | .064 | .020 | .020 | .020 | |
| 1.0 | .171 | .157 | .145 | .146 | .135 | .125 | .100 | .093 | .086 | .058 | .054 | .050 | .018 | .017 | .016 | |
| 2.0 | .155 | .133 | .113 | .133 | .114 | .098 | .091 | .079 | .068 | .053 | .046 | .040 | .017 | .015 | .013 | |
| 3.0 | .142 | .114 | .091 | .122 | .098 | .079 | .084 | .068 | .055 | .048 | .040 | .033 | .016 | .013 | .011 | |
| 4.0 | .131 | .099 | .074 | .112 | .085 | .064 | .077 | .059 | .045 | .045 | .035 | .027 | .014 | .011 | .009 | |
| 5.0 | .121 | .087 | .061 | .104 | .075 | .053 | .072 | .052 | .038 | .042 | .031 | .022 | .013 | .010 | .007 | |
| 6.0 | .113 | .077 | .052 | .097 | .067 | .045 | .067 | .047 | .032 | .039 | .028 | .019 | .013 | .009 | .006 | |
| 7.0 | .106 | .069 | .044 | .091 | .060 | .038 | .063 | .042 | .027 | .037 | .025 | .016 | .012 | .008 | .005 | |
| 8.0 | .099 | .063 | .038 | .086 | .055 | .033 | .059 | .038 | .023 | .034 | .023 | .014 | .011 | .007 | .005 | |
| 9.0 | .094 | .057 | .033 | .081 | .050 | .029 | .056 | .035 | .020 | .033 | .021 | .012 | .011 | .007 | .004 | |
| 10.0 | .089 | .053 | .029 | .077 | .046 | .025 | .053 | .032 | .018 | .031 | .019 | .011 | .010 | .006 | .004 | |

C Range: 0 - 360DEG
 C Interval: 5.0DEG
 Test Speed: HIGH
 Temperature:25.3DEG
 Operators:WLM
 Test Date:2018-08-11

γ Range: 0 - 90DEG
 γ Interval: 0.5DEG
 Test System:EVERFINE GO-2000H_V1 SYSTEM V2.0.287
 Humidity:65.0%
 Test Distance:13.824m [K=1.0000]
 Remarks: 单灯

UGR(Unified Glare Rating) Table

| | | | | | | | | | | |
|--|------------------|------|------|------|--------------|----------------|------|-----------------------|------|------|
| Test:U:3.950V I:0.3550A P:0W PF:0 Lamp Flux:131.533x1 lm | | | | | | | | | | |
| NAME: M3U(M2U M5U) (3.95V 355mA) | | | | | TYPE: | | | WEIGHT: | | |
| SPEC.: | | | | | DIM.: | | | SERIAL No.:2018081102 | | |
| MFR.: JEWOO | | | | | SUR.:0.00212 | | | PROTECTION ANGLE: | | |
| ceiling/cavity | 0.7 | 0.7 | 0.5 | 0.5 | 0.3 | 0.7 | 0.7 | 0.5 | 0.5 | 0.3 |
| walls | 0.5 | 0.3 | 0.5 | 0.3 | 0.3 | 0.5 | 0.3 | 0.5 | 0.3 | 0.3 |
| working plane | 0.2 | 0.2 | 0.2 | 0.2 | 0.2 | 0.2 | 0.2 | 0.2 | 0.2 | 0.2 |
| Room dimensions | Viewed crosswise | | | | | Viewed endwise | | | | |
| x = 2H y = 2H | 13.8 | 14.7 | 14.0 | 14.8 | 15.0 | 14.9 | 15.7 | 15.1 | 15.9 | 16.0 |
| 3H | 14.7 | 15.5 | 15.0 | 15.7 | 15.9 | 15.6 | 16.4 | 15.8 | 16.6 | 16.8 |
| 4H | 15.0 | 15.8 | 15.3 | 16.0 | 16.2 | 15.9 | 16.7 | 16.2 | 16.9 | 17.1 |
| 6H | 15.0 | 15.7 | 15.3 | 15.9 | 16.2 | 16.2 | 16.9 | 16.5 | 17.2 | 17.4 |
| 8H | 14.9 | 15.6 | 15.2 | 15.9 | 16.1 | 16.4 | 17.1 | 16.7 | 17.3 | 17.6 |
| 12H | 14.9 | 15.6 | 15.2 | 15.8 | 16.1 | 16.5 | 17.1 | 16.8 | 17.4 | 17.7 |
| 4H 2H | 14.2 | 15.0 | 14.5 | 15.2 | 15.4 | 15.1 | 15.9 | 15.4 | 16.1 | 16.3 |
| 3H | 15.3 | 16.0 | 15.6 | 16.2 | 16.5 | 16.0 | 16.6 | 16.3 | 16.9 | 17.2 |
| 4H | 15.7 | 16.3 | 16.0 | 16.6 | 16.9 | 16.4 | 17.0 | 16.8 | 17.3 | 17.7 |
| 6H | 15.7 | 16.2 | 16.0 | 16.5 | 16.9 | 16.9 | 17.4 | 17.3 | 17.8 | 18.1 |
| 8H | 15.6 | 16.1 | 16.0 | 16.5 | 16.8 | 17.1 | 17.6 | 17.5 | 17.9 | 18.3 |
| 12H | 15.6 | 16.0 | 16.0 | 16.4 | 16.8 | 17.2 | 17.7 | 17.7 | 18.1 | 18.5 |
| 8H 4H | 15.8 | 16.3 | 16.2 | 16.7 | 17.0 | 16.5 | 17.0 | 16.9 | 17.4 | 17.8 |
| 6H | 15.9 | 16.3 | 16.3 | 16.7 | 17.1 | 17.1 | 17.5 | 17.5 | 17.9 | 18.3 |
| 8H | 15.8 | 16.2 | 16.3 | 16.6 | 17.0 | 17.4 | 17.8 | 17.8 | 18.2 | 18.6 |
| 12H | 15.8 | 16.1 | 16.2 | 16.5 | 17.0 | 17.6 | 18.0 | 18.1 | 18.4 | 18.9 |
| 12H 4H | 15.8 | 16.3 | 16.2 | 16.6 | 17.0 | 16.5 | 17.0 | 16.9 | 17.3 | 17.7 |
| 6H | 15.9 | 16.3 | 16.4 | 16.7 | 17.1 | 17.1 | 17.5 | 17.6 | 17.9 | 18.3 |
| 8H | 15.9 | 16.2 | 16.4 | 16.6 | 17.1 | 17.4 | 17.7 | 17.9 | 18.2 | 18.7 |
| Variations with the observer position at spacings: | | | | | | | | | | |
| S = 1.0H | + 0.6 / - 0.8 | | | | | + 0.6 / - 0.7 | | | | |
| 1.5H | + 0.7 / - 0.5 | | | | | + 1.2 / - 0.5 | | | | |
| 2.0H | + 0.9 / - 0.7 | | | | | + 0.8 / - 0.7 | | | | |

CIE Pub.117 Corrected 131.5 lm Total Lamp Luminous Flux. (8log(F/F0) = -7.0)

C Range: 0 - 360DEG
 C Interval: 5.0DEG
 Test Speed: HIGH
 Temperature:25.3DEG
 Operators:WLM
 Test Date:2018-08-11

γ Range: 0 - 90DEG
 γ Interval: 0.5DEG
 Test System:EVERFINE GO-2000H_V1 SYSTEM V2.0.287
 Humidity:65.0%
 Test Distance:13.824m [K=1.0000]
 Remarks: 单灯

UTILIZATION FACTORS TABLE

| | | |
|--|--------------|-----------------------|
| Test:U:3.950V I:0.3550A P:0W PF:0 Lamp Flux:131.533x1 lm | | |
| NAME: M3U(M2U M5U) (3.95V 355mA) | TYPE: | WEIGHT: |
| SPEC.: | DIM.: | SERIAL No.:2018081102 |
| MFR.: JEWOO | SUR.:0.00212 | PROTECTION ANGLE: |

| REFLECTANCE | | | | | | | | | | |
|----------------------------------|--|-----|-----------|-----|-----|-----|---------------|-----|-----|--------|
| Ceiling | 0.8 | 0.8 | 0.8 | 0.7 | 0.7 | 0.7 | 0.5 | 0.5 | 0.5 | 0 |
| Walls | 0.7 | 0.5 | 0.3 | 0.7 | 0.5 | 0.3 | 0.7 | 0.5 | 0.3 | 0 |
| Working plane | 0.2 | 0.2 | 0.2 | 0.2 | 0.2 | 0.2 | 0.2 | 0.2 | 0.2 | 0 |
| ROOM INDEX | UTILIZATION FACTORS (PERCENT) $k(RI) \times RCR = 5$ | | | | | | | | | |
| k = 0.60 | 83 | 76 | 72 | 83 | 76 | 72 | 82 | 76 | 72 | 68 |
| 0.80 | 91 | 84 | 80 | 90 | 84 | 80 | 89 | 83 | 80 | 76 |
| 1.00 | 96 | 90 | 86 | 95 | 89 | 85 | 93 | 89 | 85 | 80 |
| 1.25 | 100 | 95 | 91 | 99 | 94 | 90 | 97 | 93 | 89 | 85 |
| 1.50 | 103 | 98 | 94 | 102 | 97 | 94 | 100 | 96 | 93 | 88 |
| 2.00 | 107 | 102 | 98 | 105 | 101 | 98 | 102 | 99 | 96 | 90 |
| 2.50 | 109 | 104 | 101 | 107 | 103 | 100 | 104 | 101 | 98 | 92 |
| 3.00 | 110 | 107 | 103 | 109 | 105 | 102 | 105 | 102 | 100 | 94 |
| 4.00 | 113 | 110 | 107 | 111 | 108 | 106 | 107 | 105 | 103 | 96 |
| 5.00 | 114 | 112 | 109 | 112 | 110 | 108 | 108 | 106 | 105 | 97 |
| ROOM INDEX | UF(total) | | | | | | | | | Direct |
| According to DIN EN 13032-2 2004 | | | Suspended | | | | SHRNOM = 1.25 | | | |

C Range: 0 - 360DEG
 C Interval: 5.0DEG
 Test Speed: HIGH
 Temperature:25.3DEG
 Operators:WLM
 Test Date:2018-08-11

γ Range: 0 - 90DEG
 γ Interval: 0.5DEG
 Test System:EVERFINE GO-2000H_V1 SYSTEM V2.0.287
 Humidity:65.0%
 Test Distance:13.824m [K=1.0000]
 Remarks: 单灯

ISOCANDELA DIAGRAM

| | | |
|--|--------------|-----------------------|
| Test:U:3.950V I:0.3550A P:0W PF:0 Lamp Flux:131.533x1 lm | | |
| NAME: M3U(M2U M5U) (3.95V 355mA) | TYPE: | WEIGHT: |
| SPEC.: | DIM.: | SERIAL No.:2018081102 |
| MFR.: JEWOO | SUR.:0.00212 | PROTECTION ANGLE: |

Conical surface Flux(90deg):

118.32 lm

%lum = 90.0%

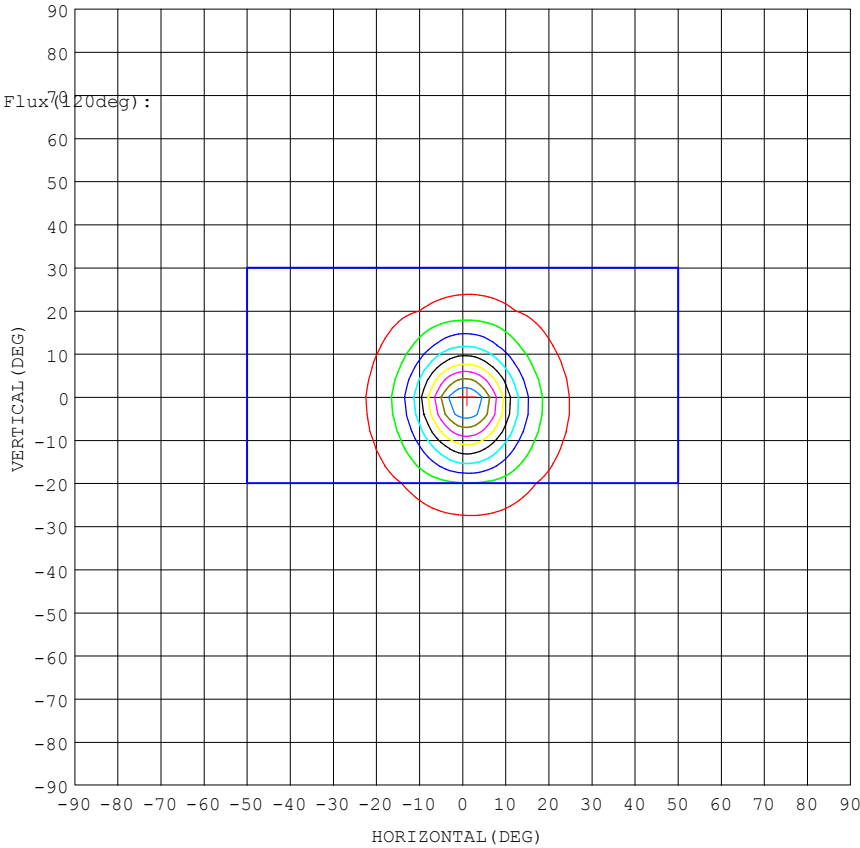
%lamp = 90.0%

Conical surface Flux(70deg):

126.48 lm

%lum = 96.2%

%lamp = 96.2%



- 10% 51.22
- 20% 102.4
- 30% 153.7
- 40% 204.9
- 50% 256.1
- 60% 307.3
- 70% 358.6
- 80% 409.8
- 90% 461.0

MAX = 512.22
 MIN = 4.5746
 AVG = 68.628
 AVG/MAX = 0.13
 MIN/MAX = 0.01

Imax:512.2 (H1.0,V0.0)
 (At:C=0.0,Gamma=0.0)

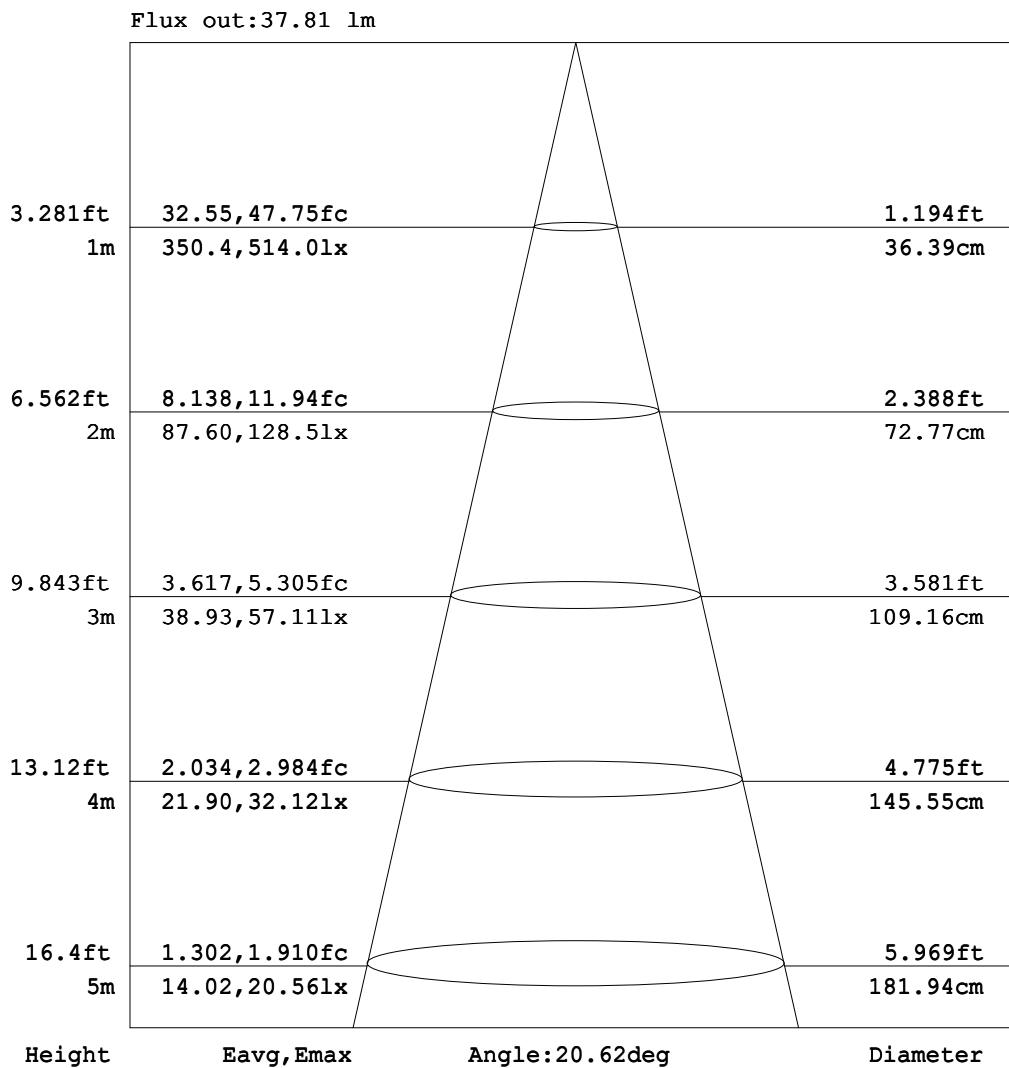
UNIT: cd

C Range: 0 - 360DEG
 C Interval: 5.0DEG
 Test Speed: HIGH
 Temperature:25.3DEG
 Operators:WLM
 Test Date:2018-08-11

γ Range: 0 - 90DEG
 γ Interval: 0.5DEG
 Test System:EVERFINE GO-2000H_V1 SYSTEM V2.0.287
 Humidity:65.0%
 Test Distance:13.824m [K=1.0000]
 Remarks: 单灯

AAI Figure

| | | |
|--|--------------|-----------------------|
| Test:U:3.950V I:0.3550A P:0W PF:0 Lamp Flux:131.533x1 lm | | |
| NAME: M3U(M2U M5U) (3.95V 355mA) | TYPE: | WEIGHT: |
| SPEC.: | DIM.: | SERIAL No.:2018081102 |
| MFR.: JEWOO | SUR.:0.00212 | PROTECTION ANGLE: |



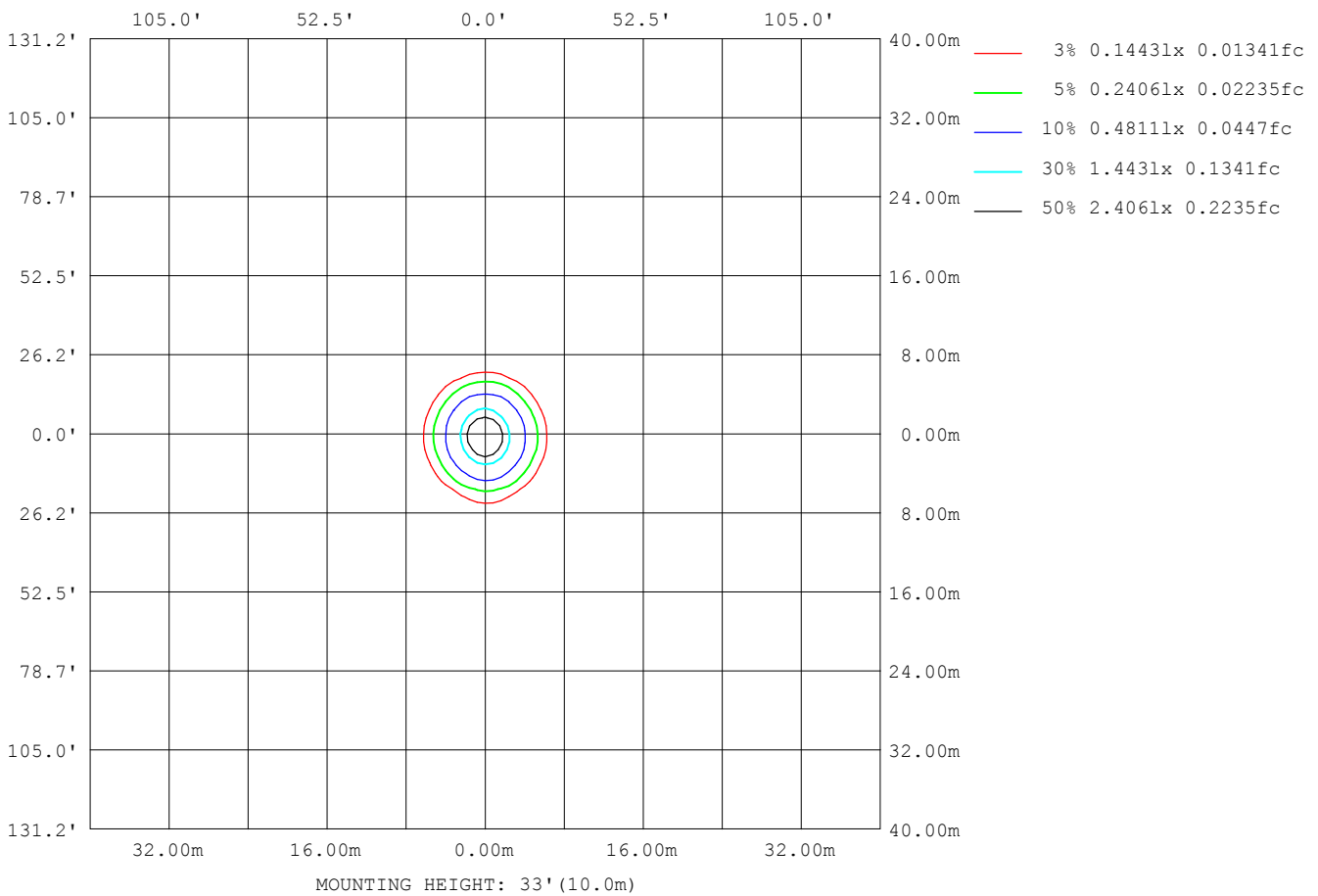
Note:The Curves indicate the illuminated area and the average illumination when the luminaire is at different distance.

C Range: 0 - 360DEG
 C Interval: 5.0DEG
 Test Speed: HIGH
 Temperature:25.3DEG
 Operators:WLM
 Test Date:2018-08-11

γ Range: 0 - 90DEG
 γ Interval: 0.5DEG
 Test System:EVERFINE GO-2000H_V1 SYSTEM V2.0.287
 Humidity:65.0%
 Test Distance:13.824m [K=1.0000]
 Remarks: 单灯

ISOLUX DIAGRAM

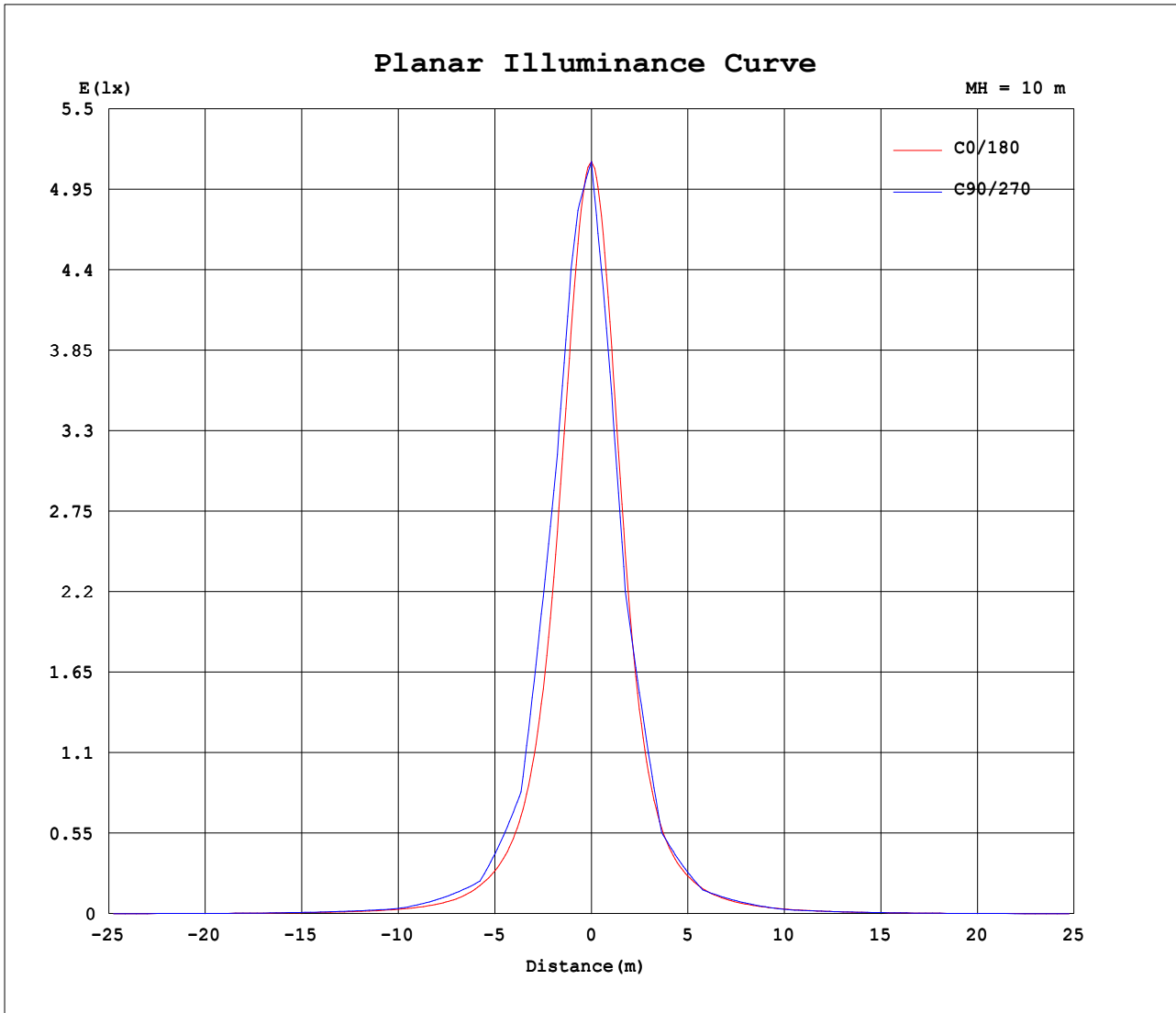
| | | |
|--|--------------|-----------------------|
| Test:U:3.950V I:0.3550A P:0W PF:0 Lamp Flux:131.533x1 lm | | |
| NAME: M3U(M2U M5U) (3.95V 355mA) | TYPE: | WEIGHT: |
| SPEC.: | DIM.: | SERIAL No.:2018081102 |
| MFR.: JEWOO | SUR.:0.00212 | PROTECTION ANGLE: |



C Range: 0 - 360DEG
 C Interval: 5.0DEG
 Test Speed: HIGH
 Temperature:25.3DEG
 Operators:WLM
 Test Date:2018-08-11

γ Range: 0 - 90DEG
 γ Interval: 0.5DEG
 Test System:EVERFINE GO-2000H_V1 SYSTEM V2.0.287
 Humidity:65.0%
 Test Distance:13.824m [K=1.0000]
 Remarks: 单灯

Planar Illuminance Curve



C Range: 0 - 360DEG
 C Interval: 5.0DEG
 Test Speed: HIGH
 Temperature: 25.3DEG
 Operators: WLM
 Test Date: 2018-08-11

γ Range: 0 - 90DEG
 γ Interval: 0.5DEG
 Test System: EVERFINE GO-2000H_V1 SYSTEM V2.0.287
 Humidity: 65.0%
 Test Distance: 13.824m [K=1.0000]
 Remarks: 单灯

LUMINOUS DISTRIBUTION INTENSITY DATA

| | | |
|--|--------------|-----------------------|
| Test:U:3.950V I:0.3550A P:0W PF:0 Lamp Flux:131.533x1 lm | | |
| NAME: M3U(M2U M5U) (3.95V 355mA) | TYPE: | WEIGHT: |
| SPEC.: | DIM.: | SERIAL No.:2018081102 |
| MFR.: JEWOO | SUR.:0.00212 | PROTECTION ANGLE: |

Table--1

UNIT: cd

| C (DEG) \ γ (DEG) | 0 | 5 | 10 | 15 | 20 | 25 | 30 | 35 | 40 | 45 | 50 | 55 | 60 | 65 | 70 | 75 | 80 | 85 | 90 |
|-------------------|------|------|------|------|------|------|------|------|------|------|------|------|------|------|------|------|------|------|------|
| 0 | 514 | 514 | 514 | 514 | 514 | 514 | 514 | 514 | 514 | 514 | 514 | 514 | 514 | 514 | 514 | 514 | 514 | 514 | 514 |
| 5 | 434 | 432 | 432 | 432 | 434 | 436 | 439 | 444 | 448 | 452 | 457 | 460 | 461 | 463 | 464 | 465 | 466 | 465 | 466 |
| 10 | 273 | 273 | 275 | 280 | 286 | 293 | 298 | 305 | 309 | 313 | 316 | 320 | 323 | 326 | 328 | 330 | 330 | 330 | 329 |
| 15 | 148 | 149 | 152 | 157 | 160 | 165 | 167 | 171 | 176 | 182 | 188 | 194 | 200 | 205 | 210 | 213 | 215 | 215 | 215 |
| 20 | 80.6 | 81.1 | 83.3 | 85.2 | 86.8 | 88.7 | 91.4 | 93.9 | 97.1 | 101 | 104 | 107 | 109 | 110 | 109 | 107 | 105 | 102 | 100 |
| 25 | 47.7 | 48.0 | 49.0 | 49.7 | 50.5 | 51.4 | 52.3 | 53.6 | 54.9 | 56.0 | 56.0 | 57.7 | 60.3 | 62.9 | 65.1 | 66.7 | 67.7 | 67.9 | 67.4 |
| 30 | 29.8 | 30.1 | 30.7 | 31.0 | 31.4 | 31.6 | 32.1 | 32.7 | 33.3 | 34.4 | 35.5 | 36.7 | 37.5 | 37.9 | 37.9 | 37.1 | 36.2 | 35.1 | 34.4 |
| 35 | 18.6 | 18.8 | 19.1 | 19.3 | 19.4 | 19.7 | 19.9 | 20.7 | 21.4 | 21.7 | 21.9 | 21.7 | 22.8 | 23.8 | 24.9 | 25.7 | 26.3 | 26.5 | 26.3 |
| 40 | 12.6 | 12.7 | 12.8 | 12.8 | 12.9 | 13.0 | 13.3 | 13.6 | 13.7 | 13.8 | 14.6 | 15.5 | 16.4 | 17.1 | 17.7 | 18.1 | 18.3 | 18.4 | 18.2 |
| 45 | 8.80 | 8.83 | 9.02 | 8.96 | 9.03 | 9.18 | 9.34 | 9.43 | 9.74 | 10.1 | 10.5 | 10.8 | 11.2 | 11.3 | 11.2 | 10.9 | 10.8 | 10.8 | 10.8 |
| 50 | 6.50 | 6.51 | 6.61 | 6.58 | 6.66 | 6.77 | 6.89 | 7.05 | 7.22 | 7.33 | 7.37 | 7.33 | 7.36 | 7.62 | 7.85 | 8.01 | 8.11 | 8.15 | 8.18 |
| 55 | 5.03 | 5.03 | 5.07 | 5.07 | 5.15 | 5.24 | 5.29 | 5.36 | 5.36 | 5.36 | 5.48 | 5.67 | 5.85 | 6.00 | 6.12 | 6.20 | 6.23 | 6.21 | 6.21 |
| 60 | 4.03 | 4.05 | 4.02 | 4.04 | 4.11 | 4.11 | 4.12 | 4.12 | 4.18 | 4.27 | 4.36 | 4.44 | 4.49 | 4.50 | 4.47 | 4.43 | 4.39 | 4.28 | 4.24 |
| 65 | 3.20 | 3.24 | 3.15 | 3.24 | 3.18 | 3.19 | 3.22 | 3.24 | 3.29 | 3.36 | 3.38 | 3.35 | 3.35 | 3.33 | 3.31 | 3.33 | 3.35 | 3.32 | 3.31 |
| 70 | 2.38 | 2.36 | 2.34 | 2.35 | 2.30 | 2.34 | 2.40 | 2.44 | 2.47 | 2.46 | 2.44 | 2.40 | 2.39 | 2.38 | 2.34 | 2.36 | 2.37 | 2.38 | 2.38 |
| 75 | 1.07 | 1.16 | 1.31 | 1.33 | 1.30 | 1.54 | 1.52 | 1.56 | 1.54 | 1.52 | 1.53 | 1.59 | 1.65 | 1.69 | 1.69 | 1.74 | 1.77 | 1.79 | 1.79 |
| 80 | 0.30 | 0.28 | 0.23 | 0.34 | 0.38 | 0.38 | 0.36 | 0.73 | 0.92 | 0.98 | 1.01 | 1.06 | 1.10 | 1.13 | 1.14 | 1.17 | 1.19 | 1.21 | 1.21 |
| 85 | 0.03 | 0.02 | 0.04 | 0.02 | 0.03 | 0.05 | 0.18 | 0.33 | 0.47 | 0.50 | 0.52 | 0.55 | 0.57 | 0.58 | 0.59 | 0.60 | 0.61 | 0.62 | 0.62 |
| 90 | 0.02 | 0.03 | 0.03 | 0.03 | 0.03 | 0.03 | 0.03 | 0.03 | 0.03 | 0.03 | 0.03 | 0.03 | 0.03 | 0.03 | 0.03 | 0.03 | 0.03 | 0.03 | 0.03 |

C Range: 0 - 360DEG
 C Interval: 5.0DEG
 Test Speed: HIGH
 Temperature:25.3DEG
 Operators:WLM
 Test Date:2018-08-11

γ Range: 0 - 90DEG
 γ Interval: 0.5DEG
 Test System:EVERFINE GO-2000H_V1 SYSTEM V2.0.287
 Humidity:65.0%
 Test Distance:13.824m [K=1.0000]
 Remarks: 单灯

LUMINOUS DISTRIBUTION INTENSITY DATA

| | | |
|--|--------------|-----------------------|
| Test:U:3.950V I:0.3550A P:0W PF:0 Lamp Flux:131.533x1 lm | | |
| NAME: M3U(M2U M5U) (3.95V 355mA) | TYPE: | WEIGHT: |
| SPEC.: | DIM.: | SERIAL No.:2018081102 |
| MFR.: JEWOO | SUR.:0.00212 | PROTECTION ANGLE: |

Table--3

UNIT: cd

| C (DEG) γ (DEG) | 190 | 195 | 200 | 205 | 210 | 215 | 220 | 225 | 230 | 235 | 240 | 245 | 250 | 255 | 260 | 265 | 270 | 275 | 280 |
|--------------------|------|------|------|------|------|------|------|------|------|------|------|------|------|------|------|------|------|------|------|
| 0 | 514 | 514 | 514 | 514 | 514 | 514 | 514 | 514 | 514 | 514 | 514 | 514 | 514 | 514 | 514 | 514 | 514 | 514 | 514 |
| 5 | 412 | 406 | 402 | 398 | 395 | 394 | 392 | 391 | 391 | 391 | 390 | 390 | 389 | 389 | 389 | 389 | 390 | 389 | 390 |
| 10 | 246 | 243 | 241 | 241 | 240 | 240 | 240 | 239 | 238 | 237 | 236 | 235 | 234 | 232 | 231 | 231 | 231 | 231 | 232 |
| 15 | 127 | 127 | 126 | 126 | 126 | 126 | 126 | 128 | 131 | 135 | 138 | 141 | 144 | 146 | 147 | 148 | 149 | 149 | 149 |
| 20 | 68.3 | 67.9 | 67.7 | 67.7 | 68.1 | 69.3 | 70.8 | 72.4 | 73.9 | 75.0 | 75.2 | 74.5 | 73.0 | 70.9 | 68.8 | 67.4 | 67.2 | 68.2 | 70.4 |
| 25 | 40.5 | 40.3 | 40.3 | 40.4 | 40.5 | 40.9 | 41.4 | 41.6 | 40.8 | 41.1 | 42.2 | 43.1 | 43.9 | 44.7 | 45.3 | 45.8 | 46.2 | 46.4 | 46.6 |
| 30 | 25.7 | 25.6 | 25.5 | 25.5 | 25.7 | 25.7 | 25.6 | 26.3 | 27.0 | 27.5 | 27.6 | 27.3 | 26.9 | 26.3 | 25.7 | 25.3 | 25.2 | 25.6 | 26.4 |
| 35 | 17.5 | 17.5 | 17.4 | 17.3 | 17.4 | 17.5 | 17.7 | 17.8 | 17.8 | 17.4 | 17.7 | 18.2 | 18.5 | 19.0 | 19.3 | 19.5 | 19.6 | 19.7 | 19.7 |
| 40 | 12.6 | 12.5 | 12.4 | 12.5 | 12.4 | 12.5 | 12.4 | 12.4 | 12.7 | 13.1 | 13.4 | 13.6 | 13.8 | 13.9 | 14.0 | 14.0 | 14.0 | 14.1 | 14.1 |
| 45 | 9.27 | 9.18 | 9.18 | 9.14 | 9.07 | 8.99 | 9.15 | 9.36 | 9.53 | 9.65 | 9.68 | 9.59 | 9.40 | 9.11 | 9.05 | 8.90 | 8.82 | 8.85 | 8.91 |
| 50 | 6.88 | 6.87 | 6.87 | 6.79 | 6.74 | 6.84 | 6.95 | 6.99 | 6.94 | 6.81 | 6.77 | 6.84 | 6.90 | 6.95 | 6.97 | 6.91 | 6.87 | 6.88 | 6.84 |
| 55 | 5.18 | 5.23 | 5.15 | 5.13 | 5.18 | 5.20 | 5.21 | 5.20 | 5.21 | 5.24 | 5.33 | 5.37 | 5.38 | 5.41 | 5.40 | 5.36 | 5.33 | 5.35 | 5.36 |
| 60 | 3.96 | 3.94 | 3.88 | 3.90 | 3.94 | 3.94 | 3.94 | 3.99 | 3.99 | 3.98 | 3.98 | 3.96 | 3.91 | 3.88 | 3.84 | 3.81 | 3.79 | 3.83 | 3.91 |
| 65 | 2.99 | 2.87 | 2.87 | 2.92 | 2.93 | 2.92 | 2.91 | 2.90 | 2.88 | 2.83 | 2.88 | 2.91 | 2.92 | 2.92 | 2.91 | 2.89 | 2.81 | 2.85 | 2.87 |
| 70 | 2.02 | 2.01 | 2.06 | 2.04 | 2.01 | 1.99 | 2.00 | 2.04 | 2.09 | 2.11 | 2.12 | 2.15 | 2.13 | 2.08 | 2.02 | 1.98 | 1.84 | 1.89 | 1.85 |
| 75 | 1.20 | 1.28 | 1.26 | 1.20 | 1.22 | 1.29 | 1.34 | 1.37 | 1.41 | 1.49 | 1.55 | 1.58 | 1.59 | 1.57 | 1.54 | 1.53 | 1.43 | 1.46 | 1.40 |
| 80 | 0.66 | 0.63 | 0.64 | 0.71 | 0.74 | 0.81 | 0.88 | 0.93 | 0.99 | 1.05 | 1.09 | 1.11 | 1.12 | 1.11 | 1.09 | 1.08 | 1.01 | 1.03 | 0.99 |
| 85 | 0.21 | 0.32 | 0.39 | 0.43 | 0.46 | 0.49 | 0.53 | 0.56 | 0.59 | 0.62 | 0.64 | 0.65 | 0.66 | 0.65 | 0.64 | 0.63 | 0.60 | 0.61 | 0.59 |
| 90 | 0.19 | 0.19 | 0.19 | 0.19 | 0.19 | 0.19 | 0.19 | 0.19 | 0.19 | 0.19 | 0.19 | 0.19 | 0.19 | 0.19 | 0.18 | 0.18 | 0.18 | 0.18 | 0.18 |

C Range: 0 - 360DEG
 C Interval: 5.0DEG
 Test Speed: HIGH
 Temperature:25.3DEG
 Operators:WLM
 Test Date:2018-08-11

γ Range: 0 - 90DEG
 γ Interval: 0.5DEG
 Test System:EVERFINE GO-2000H_V1 SYSTEM V2.0.287
 Humidity:65.0%
 Test Distance:13.824m [K=1.0000]
 Remarks: 单灯

LUMINOUS DISTRIBUTION INTENSITY DATA

| | | |
|--|--------------|-----------------------|
| Test:U:3.950V I:0.3550A P:0W PF:0 Lamp Flux:131.533x1 lm | | |
| NAME: M3U(M2U M5U) (3.95V 355mA) | TYPE: | WEIGHT: |
| SPEC.: | DIM.: | SERIAL No.:2018081102 |
| MFR.: JEWOO | SUR.:0.00212 | PROTECTION ANGLE: |

Table--4

UNIT: cd

| C (DEG) \ γ (DEG) | 285 | 290 | 295 | 300 | 305 | 310 | 315 | 320 | 325 | 330 | 335 | 340 | 345 | 350 | 355 | | | | |
|-------------------|------|------|------|------|------|------|------|------|------|------|------|------|------|------|------|--|--|--|--|
| 0 | 514 | 514 | 514 | 514 | 514 | 514 | 514 | 514 | 514 | 514 | 514 | 514 | 514 | 514 | 514 | | | | |
| 5 | 390 | 391 | 392 | 393 | 394 | 395 | 396 | 397 | 399 | 401 | 404 | 408 | 413 | 419 | 426 | | | | |
| 10 | 234 | 236 | 238 | 240 | 242 | 243 | 245 | 247 | 249 | 250 | 251 | 253 | 255 | 259 | 265 | | | | |
| 15 | 148 | 146 | 144 | 142 | 139 | 136 | 133 | 131 | 133 | 135 | 137 | 138 | 140 | 141 | 143 | | | | |
| 20 | 73.2 | 75.8 | 77.8 | 78.7 | 78.7 | 78.1 | 77.0 | 75.8 | 74.6 | 73.9 | 74.5 | 75.6 | 76.7 | 77.6 | 78.4 | | | | |
| 25 | 46.5 | 46.1 | 45.4 | 44.5 | 43.6 | 43.2 | 44.3 | 44.5 | 44.5 | 44.4 | 44.5 | 44.9 | 45.6 | 46.4 | 46.8 | | | | |
| 30 | 27.2 | 27.9 | 28.5 | 28.7 | 28.6 | 28.3 | 27.8 | 27.1 | 27.3 | 27.6 | 27.8 | 28.0 | 28.4 | 29.0 | 29.2 | | | | |
| 35 | 19.4 | 19.0 | 18.5 | 17.9 | 17.5 | 18.1 | 18.2 | 18.1 | 17.9 | 17.7 | 17.8 | 17.9 | 18.1 | 18.3 | 18.5 | | | | |
| 40 | 14.1 | 13.9 | 13.7 | 13.3 | 13.0 | 12.6 | 12.2 | 12.2 | 12.2 | 12.2 | 12.1 | 12.1 | 12.2 | 12.4 | 12.5 | | | | |
| 45 | 8.94 | 9.17 | 9.33 | 9.40 | 9.36 | 9.22 | 9.00 | 8.75 | 8.55 | 8.60 | 8.57 | 8.56 | 8.61 | 8.76 | 8.75 | | | | |
| 50 | 6.79 | 6.67 | 6.52 | 6.37 | 6.42 | 6.57 | 6.60 | 6.53 | 6.44 | 6.35 | 6.36 | 6.34 | 6.34 | 6.41 | 6.40 | | | | |
| 55 | 5.38 | 5.33 | 5.25 | 5.15 | 5.04 | 4.91 | 4.83 | 4.88 | 4.93 | 4.92 | 4.92 | 4.91 | 4.90 | 4.94 | 4.97 | | | | |
| 60 | 4.01 | 4.04 | 4.03 | 4.02 | 3.99 | 3.92 | 3.86 | 3.82 | 3.79 | 3.83 | 3.86 | 3.93 | 3.90 | 3.91 | 3.98 | | | | |
| 65 | 2.91 | 2.94 | 2.92 | 2.97 | 3.03 | 3.05 | 3.03 | 3.01 | 2.98 | 2.97 | 2.96 | 3.02 | 3.11 | 3.04 | 3.16 | | | | |
| 70 | 1.87 | 1.93 | 1.84 | 1.94 | 2.04 | 2.08 | 2.16 | 2.25 | 2.25 | 2.21 | 2.16 | 2.17 | 2.25 | 2.28 | 2.31 | | | | |
| 75 | 1.39 | 1.37 | 1.23 | 1.24 | 1.26 | 1.17 | 1.19 | 1.26 | 1.25 | 1.40 | 1.11 | 1.19 | 0.94 | 1.05 | 0.97 | | | | |
| 80 | 0.99 | 0.96 | 0.88 | 0.89 | 0.89 | 0.83 | 0.79 | 0.67 | 0.45 | 0.34 | 0.34 | 0.33 | 0.32 | 0.18 | 0.25 | | | | |
| 85 | 0.59 | 0.57 | 0.54 | 0.54 | 0.54 | 0.51 | 0.48 | 0.40 | 0.30 | 0.25 | 0.20 | 0.15 | 0.14 | 0.11 | 0.05 | | | | |
| 90 | 0.18 | 0.18 | 0.18 | 0.18 | 0.18 | 0.18 | 0.18 | 0.18 | 0.18 | 0.18 | 0.18 | 0.18 | 0.18 | 0.18 | 0.18 | | | | |

C Range: 0 - 360DEG
 C Interval: 5.0DEG
 Test Speed: HIGH
 Temperature:25.3DEG
 Operators:WLM
 Test Date:2018-08-11

γ Range: 0 - 90DEG
 γ Interval: 0.5DEG
 Test System:EVERFINE GO-2000H_V1 SYSTEM V2.0.287
 Humidity:65.0%
 Test Distance:13.824m [K=1.0000]
 Remarks: 单灯