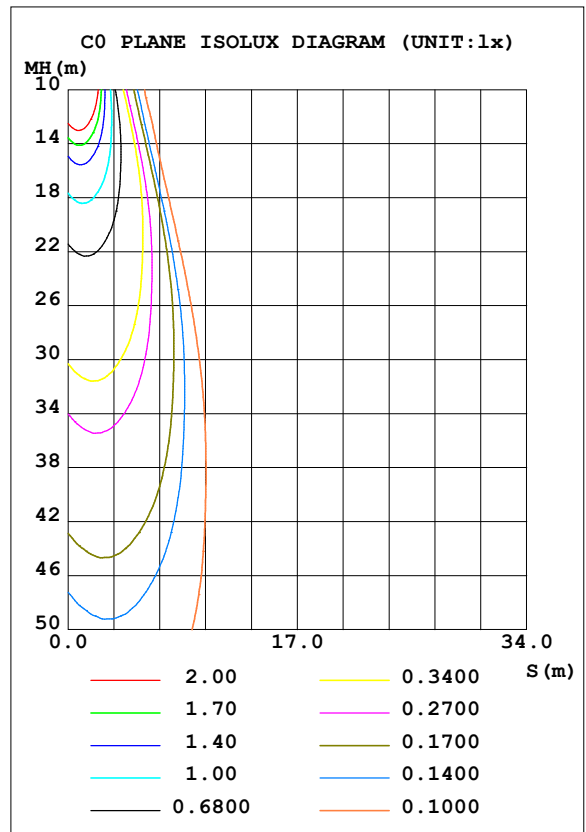
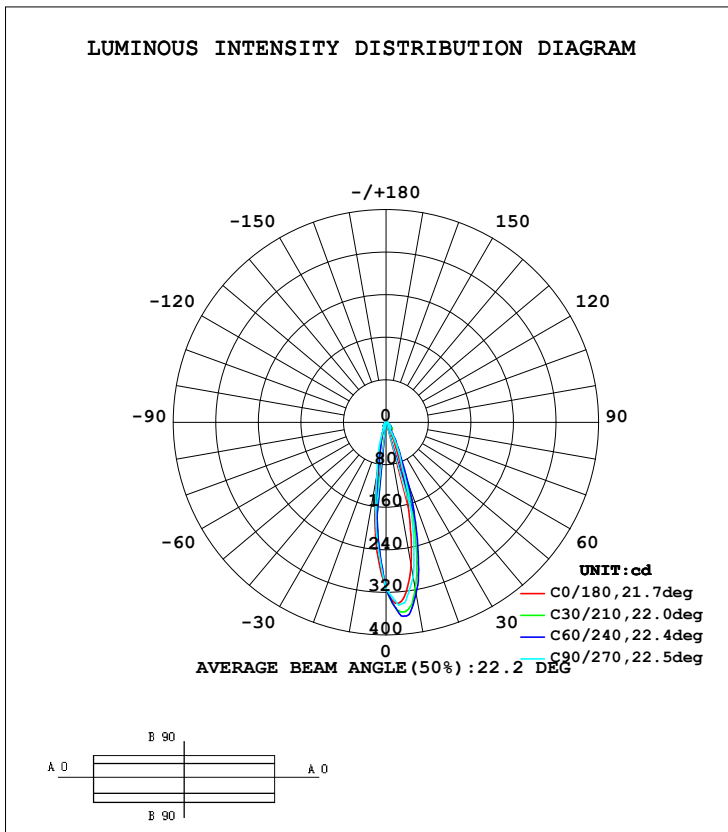


LUMINAIRE PHOTOMETRIC TEST REPORT

Test:U:0.0950V I:0A P:0W PF:0 Lamp Flux:84.2522x1 lm		
NAME: C5U-RC	TYPE:	WEIGHT:
SPEC.:	DIM.:	SERIAL No.:2023032302
MFR.: JEWOO	SUR.:0.05	PROTECTION ANGLE:

DATA OF LAMP		PHOTOMETRIC DATA			
MODEL	C5U-RC	I _{max} (cd)	369.3	S/MH (C0/180)	0.27
NOMINAL POWER (W)		LOR (%)	100.0	S/MH (C90/270)	0.25
RATED VOLTAGE (V)	DC 4v	TOTAL FLUX (lm)	84.252	η UP, DN (C0-180)	0.0, 64.9
NOMINAL FLUX (lm)	84.2522	CIE CLASS	DIRECT	η UP, DN (C180-360)	0.0, 35.1
LAMPS INSIDE	1	η up (%)	0.0	CIBSE SHR NOM	0.00
TEST VOLTAGE (V)	DC 4v	η down (%)	100.0	CIBSE SHR MAX	1.00



C Range: 0 - 360DEG
 C Interval: 5.0DEG
 Test Speed: HIGH
 Temperature: 25.3DEG
 Operators: HJL
 Test Date: 2023-03-23

γ Range: 0 - 90DEG
 γ Interval: 0.5DEG
 Test System: EVERFINE GO-2000H_V1 SYSTEM V2.0.287
 Humidity: 65.0%
 Test Distance: 13.252m [K=1.0000]
 Remarks:

ZONAL FLUX DIAGRAM

ZONAL FLUX DIAGRAM:

γ	C0	C45	C90	C135	C180	C225	C270	C315	γ	Φ zone	Φ total	%lum,lamp
5	337.8	366.5	342.7	275.8	223.9	189.7	208.1	263.3	0- 5	6.956	6.956	8.26,8.26
10	271.6	326.9	296.1	182.8	97.52	77.90	94.21	168.7	5- 10	16.40	23.36	27.7,27.7
15	161.6	228.1	191.3	84.82	38.24	30.69	54.59	76.36	10- 15	17.09	40.45	48,48
20	69.97	120.3	86.43	33.07	16.07	15.55	14.97	36.30	15- 20	12.48	52.93	62.8,62.8
25	26.66	47.70	49.84	14.29	9.060	9.336	11.22	16.28	20- 25	7.049	59.98	71.2,71.2
30	14.74	21.40	13.24	8.781	7.714	8.028	7.471	11.26	25- 30	4.257	64.24	76.2,76.2
35	17.37	16.26	12.07	8.034	7.156	7.984	6.624	11.45	30- 35	3.194	67.43	80,80
40	14.55	15.83	10.91	7.259	7.656	7.385	5.777	10.84	35- 40	3.370	70.80	84,84
45	10.54	12.46	9.625	6.634	5.266	5.312	4.926	7.875	40- 45	3.235	74.04	87.9,87.9
50	6.839	8.377	7.390	5.264	3.595	3.701	4.040	5.492	45- 50	2.660	76.69	91,91
55	4.465	5.265	5.036	3.638	2.634	2.608	3.150	3.557	50- 55	2.030	78.72	93.4,93.4
60	3.104	3.797	2.682	2.740	2.083	2.194	2.260	2.828	55- 60	1.534	80.26	95.3,95.3
65	2.320	2.751	2.207	2.026	1.628	1.784	1.792	2.291	60- 65	1.175	81.43	96.7,96.7
70	1.804	2.011	1.733	1.598	1.428	1.352	1.323	1.797	65- 70	0.9492	82.38	97.8,97.8
75	1.430	1.494	1.347	1.448	0.9717	1.008	1.016	1.328	70- 75	0.7607	83.14	98.7,98.7
80	1.007	1.104	0.9603	0.9838	0.5149	0.6808	0.7085	0.9358	75- 80	0.5659	83.71	99.4,99.4
85	0.5859	0.7116	0.5739	0.5000	0.1633	0.3814	0.4011	0.5411	80- 85	0.3672	84.08	99.8,99.8
90	0.0234	0.3396	0.1876	0.0351	0.0117	0.0937	0.0937	0.1405	85- 90	0.1752	84.25	100,100
95									90- 95			
100									95-100			
105									100-105			
110									105-110			
115									110-115			
120									115-120			
125									120-125			
130									125-130			
135									130-135			
140									135-140			
145									140-145			
150									145-150			
155									150-155			
160									155-160			
165									160-165			
170									165-170			
175									170-175			
180									175-180			
DEG	LUMINOUS INTENSITY:cd								UNIT:lm			

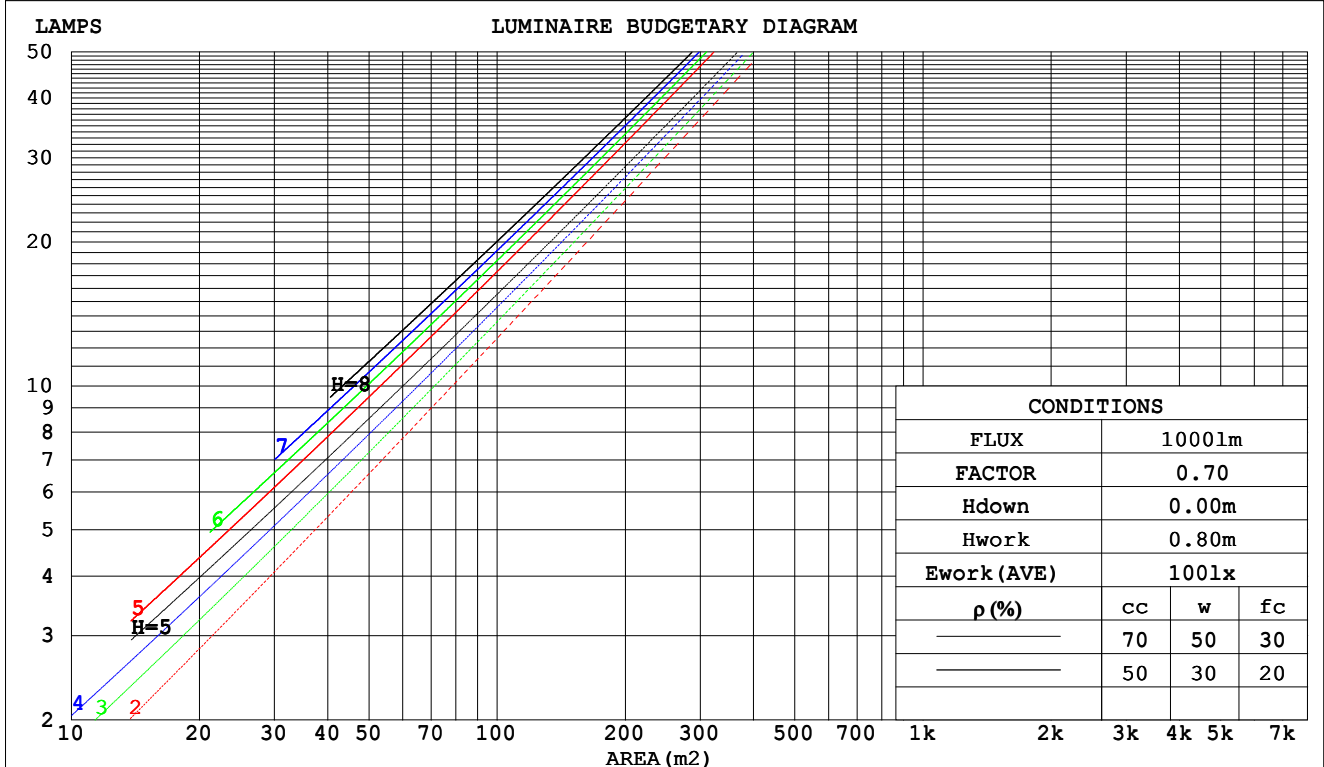
C Range: 0 - 360DEG
 C Interval: 5.0DEG
 Test Speed: HIGH
 Temperature:25.3DEG
 Operators:HJL
 Test Date:2023-03-23

γ Range: 0 - 90DEG
 γ Interval: 0.5DEG
 Test System:EVERFINE GO-2000H_V1 SYSTEM V2.0.287
 Humidity:65.0%
 Test Distance:13.252m [K=1.0000]
 Remarks:

CU AND LUMINAIRE BUDGETARY ESTIMATE DIAGRAM

Test:U:0.0950V I:0A P:0W PF:0 Lamp Flux:84.2522x1 lm		
NAME: C5U-RC	TYPE:	WEIGHT:
SPEC.:	DIM.:	SERIAL No.:2023032302
MFR.: JEWOO	SUR.:0.05	PROTECTION ANGLE:

ρcc	80%			70%			50%			30%			10%			0														
	50%	30%	10%	50%	30%	10%	50%	30%	10%	50%	30%	10%	50%	30%	10%															
ρw																0														
ρfc	20%			20%			20%			20%			20%			0														
RCR	RCR:Room Cavity Ratio															Coefficients of Utilization(CU)														
0.0	1.19	1.19	1.19	1.16	1.16	1.16	1.11	1.11	1.11	1.06	1.06	1.06	1.02	1.02	1.02	.00														
1.0	1.11	1.08	1.06	1.08	1.06	1.04	1.04	1.03	1.01	1.01	.99	.98	.97	.96	.95	.93														
2.0	1.03	.99	.96	1.02	.98	.95	.98	.95	.93	.95	.93	.91	.93	.91	.89	.87														
3.0	.97	.92	.89	.96	.91	.88	.93	.89	.86	.91	.88	.85	.89	.86	.84	.82														
4.0	.92	.87	.83	.91	.86	.82	.89	.84	.81	.87	.83	.80	.85	.82	.79	.78														
5.0	.87	.82	.78	.86	.81	.77	.84	.80	.77	.83	.79	.76	.81	.78	.75	.74														
6.0	.83	.78	.74	.82	.77	.74	.81	.76	.73	.80	.76	.73	.78	.75	.72	.71														
7.0	.79	.74	.70	.79	.74	.70	.78	.73	.70	.76	.72	.69	.75	.72	.69	.68														
8.0	.76	.71	.67	.76	.71	.67	.75	.70	.67	.74	.70	.67	.73	.69	.66	.65														
9.0	.73	.68	.65	.73	.68	.65	.72	.68	.64	.71	.67	.64	.70	.67	.64	.63														
10.0	.71	.66	.62	.70	.66	.62	.70	.65	.62	.69	.65	.62	.68	.65	.62	.61														



C Range: 0 - 360DEG
 C Interval: 5.0DEG
 Test Speed: HIGH
 Temperature:25.3DEG
 Operators:HJL
 Test Date:2023-03-23

γ Range: 0 - 90DEG
 γ Interval: 0.5DEG
 Test System:EVERFINE GO-2000H_V1 SYSTEM V2.0.287
 Humidity:65.0%
 Test Distance:13.252m [K=1.0000]
 Remarks:

WEC AND CCEC

Test:U:0.0950V I:0A P:0W PF:0 Lamp Flux:84.2522x1 lm														
NAME: C5U-RC					TYPE:					WEIGHT:				
SPEC.:					DIM.:					SERIAL No.:2023032302				
MFR.: JEWOO					SUR.:0.05					PROTECTION ANGLE:				

ρ_{CC}	80%			70%			50%			30%			10%			0
ρ_w	50%	30%	10%	50%	30%	10%	50%	30%	10%	50%	30%	10%	50%	30%	10%	0
ρ_{fc}	20%			20%			20%			20%			20%			0
RCR	RCR:Room Cavity Ratio						Wall Exitance Coefficients(WEC)									
0.0																
1.0	.180	.103	.033	.174	.099	.031	.161	.092	.030	.150	.086	.028	.139	.080	.026	
2.0	.168	.092	.028	.162	.089	.028	.152	.084	.026	.142	.080	.025	.133	.075	.024	
3.0	.156	.083	.025	.151	.081	.024	.142	.077	.023	.134	.074	.023	.126	.070	.022	
4.0	.146	.076	.022	.142	.074	.022	.134	.071	.021	.127	.068	.021	.120	.065	.020	
5.0	.136	.069	.020	.133	.068	.020	.126	.066	.019	.120	.063	.019	.114	.061	.018	
6.0	.128	.064	.018	.125	.063	.018	.119	.061	.018	.114	.059	.017	.109	.057	.017	
7.0	.121	.060	.017	.118	.059	.017	.113	.057	.016	.108	.055	.016	.104	.054	.016	
8.0	.114	.056	.016	.112	.055	.016	.107	.054	.015	.103	.052	.015	.099	.051	.015	
9.0	.108	.052	.015	.106	.052	.015	.102	.050	.014	.098	.049	.014	.095	.048	.014	
10.0	.103	.049	.014	.101	.049	.014	.097	.048	.013	.094	.047	.013	.091	.046	.013	

ρ_{CC}	80%			70%			50%			30%			10%			0
ρ_w	50%	30%	10%	50%	30%	10%	50%	30%	10%	50%	30%	10%	50%	30%	10%	0
ρ_{fc}	20%			20%			20%			20%			20%			0
RCR	RCR:Room Cavity Ratio						Ceiling Cavity Exitance Coefficients(CCEC)									
0.0	.190	.190	.190	.163	.163	.163	.111	.111	.111	.064	.064	.064	.020	.020	.020	
1.0	.171	.157	.145	.147	.135	.124	.100	.093	.086	.058	.054	.050	.018	.017	.016	
2.0	.156	.133	.113	.133	.114	.098	.091	.079	.068	.053	.046	.040	.017	.015	.013	
3.0	.143	.114	.090	.122	.098	.078	.084	.068	.055	.048	.040	.032	.016	.013	.011	
4.0	.131	.099	.074	.113	.085	.064	.077	.059	.045	.045	.035	.027	.014	.011	.009	
5.0	.122	.087	.061	.104	.075	.053	.072	.052	.038	.042	.031	.022	.013	.010	.007	
6.0	.113	.077	.051	.097	.067	.045	.067	.047	.032	.039	.028	.019	.013	.009	.006	
7.0	.106	.069	.044	.091	.060	.038	.063	.042	.027	.037	.025	.016	.012	.008	.005	
8.0	.099	.063	.038	.086	.055	.033	.059	.038	.023	.034	.023	.014	.011	.007	.005	
9.0	.094	.057	.033	.081	.050	.029	.056	.035	.020	.033	.021	.012	.011	.007	.004	
10.0	.089	.053	.029	.076	.046	.025	.053	.032	.018	.031	.019	.011	.010	.006	.004	

C Range: 0 - 360DEG
 C Interval: 5.0DEG
 Test Speed: HIGH
 Temperature:25.3DEG
 Operators:HJL
 Test Date:2023-03-23

γ Range: 0 - 90DEG
 γ Interval: 0.5DEG
 Test System:EVERFINE GO-2000H_V1 SYSTEM V2.0.287
 Humidity:65.0%
 Test Distance:13.252m [K=1.0000]
 Remarks:

UGR(Unified Glare Rating) Table

Test:U:0.0950V I:0A P:0W PF:0 Lamp Flux:84.2522x1 lm										
NAME: C5U-RC					TYPE:			WEIGHT:		
SPEC.:					DIM.:			SERIAL No.:2023032302		
MFR.: JEWOO					SUR.:0.05			PROTECTION ANGLE:		
ceiling/cavity	0.7	0.7	0.5	0.5	0.3	0.7	0.7	0.5	0.5	0.3
walls	0.5	0.3	0.5	0.3	0.3	0.5	0.3	0.5	0.3	0.3
working plane	0.2	0.2	0.2	0.2	0.2	0.2	0.2	0.2	0.2	0.2
Room dimensions	Viewed crosswise					Viewed endwise				
x = 2H y = 2H	15.6	16.4	15.8	16.6	16.7	15.6	16.4	15.8	16.6	16.7
3H	16.1	16.9	16.3	17.1	17.3	16.1	16.9	16.3	17.1	17.3
4H	16.4	17.2	16.7	17.4	17.6	16.4	17.2	16.7	17.4	17.6
6H	16.7	17.5	17.0	17.7	17.9	16.7	17.4	17.0	17.7	17.9
8H	16.9	17.6	17.2	17.8	18.1	16.9	17.6	17.2	17.8	18.1
12H	17.0	17.7	17.3	17.9	18.2	17.0	17.7	17.3	17.9	18.2
4H 2H	15.8	16.6	16.1	16.8	17.0	15.8	16.6	16.1	16.8	17.0
3H	16.6	17.2	16.9	17.5	17.8	16.6	17.2	16.9	17.5	17.8
4H	17.0	17.7	17.4	18.0	18.3	17.0	17.6	17.3	17.9	18.2
6H	17.5	18.1	17.9	18.4	18.8	17.5	18.0	17.9	18.4	18.7
8H	17.8	18.3	18.2	18.6	19.0	17.7	18.2	18.1	18.6	18.9
12H	17.9	18.4	18.4	18.8	19.2	17.9	18.4	18.3	18.8	19.1
8H 4H	17.2	17.7	17.6	18.1	18.5	17.2	17.7	17.6	18.0	18.4
6H	17.9	18.3	18.3	18.7	19.1	17.8	18.3	18.3	18.7	19.1
8H	18.2	18.6	18.7	19.0	19.5	18.2	18.6	18.6	19.0	19.4
12H	18.5	18.9	19.0	19.3	19.8	18.5	18.9	19.0	19.3	19.8
12H 4H	17.2	17.7	17.6	18.1	18.5	17.2	17.7	17.6	18.0	18.4
6H	18.0	18.4	18.4	18.8	19.2	17.9	18.3	18.4	18.7	19.1
8H	18.4	18.7	18.8	19.1	19.6	18.3	18.7	18.8	19.1	19.6
Variations with the observer position at spacings:										
S = 1.0H	+ 0.7 / - 0.8					+ 0.4 / - 0.5				
1.5H	+ 0.6 / - 0.7					+ 0.3 / - 0.6				
2.0H	+ 1.6 / - 0.9					+ 1.1 / - 1.4				

CIE Pub.117 Corrected 84.25 lm Total Lamp Luminous Flux. (8log(F/F0) = -8.6)

C Range: 0 - 360DEG
C Interval: 5.0DEG
Test Speed: HIGH
Temperature:25.3DEG
Operators:HJL
Test Date:2023-03-23

γ Range: 0 - 90DEG
 γ Interval: 0.5DEG
Test System:EVERFINE GO-2000H_V1 SYSTEM V2.0.287
Humidity:65.0%
Test Distance:13.252m [K=1.0000]
Remarks:

UTILIZATION FACTORS TABLE

Test:U:0.0950V I:0A P:0W PF:0 Lamp Flux:84.2522x1 lm		
NAME: C5U-RC	TYPE:	WEIGHT:
SPEC.:	DIM.:	SERIAL No.:2023032302
MFR.: JEWOO	SUR.:0.05	PROTECTION ANGLE:

REFLECTANCE										
Ceiling	0.8	0.8	0.8	0.7	0.7	0.7	0.5	0.5	0.5	0
Walls	0.7	0.5	0.3	0.7	0.5	0.3	0.7	0.5	0.3	0
Working plane	0.2	0.2	0.2	0.2	0.2	0.2	0.2	0.2	0.2	0
ROOM INDEX	UTILIZATION FACTORS (PERCENT) $k(RI) \times RCR = 5$									
k = 0.60	82	74	70	81	74	70	80	74	70	66
0.80	90	83	78	89	82	78	88	82	78	73
1.00	95	88	84	94	88	84	92	88	83	79
1.25	99	93	89	98	93	89	96	91	88	83
1.50	103	97	93	101	96	92	99	95	91	86
2.00	106	101	97	104	100	96	102	98	95	89
2.50	108	103	100	106	102	99	103	100	97	91
3.00	110	106	103	108	104	101	105	102	99	92
4.00	112	109	106	110	107	105	106	104	102	95
5.00	114	111	109	112	109	107	107	106	104	96
ROOM INDEX	UF(total)									Direct
According to DIN EN 13032-2 2004			Suspended				SHRNOM = 1.25			

C Range: 0 - 360DEG
 C Interval: 5.0DEG
 Test Speed: HIGH
 Temperature:25.3DEG
 Operators:HJL
 Test Date:2023-03-23

γ Range: 0 - 90DEG
 γ Interval: 0.5DEG
 Test System:EVERFINE GO-2000H_V1 SYSTEM V2.0.287
 Humidity:65.0%
 Test Distance:13.252m [K=1.0000]
 Remarks:

ISOCANDELA DIAGRAM

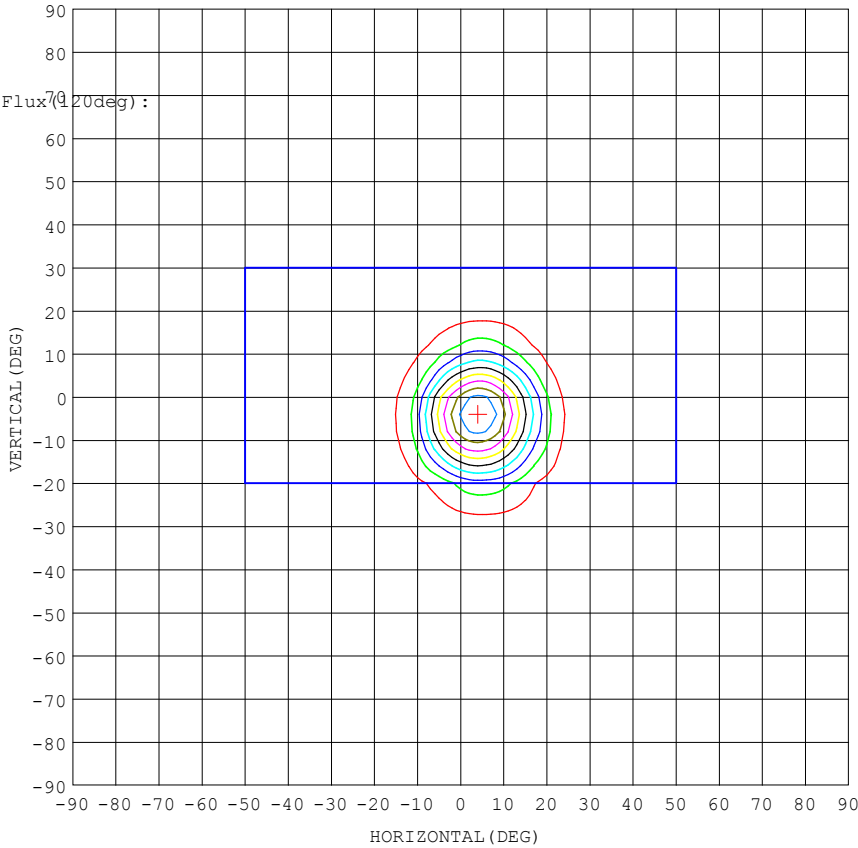
Test:U:0.0950V I:0A P:0W PF:0 Lamp Flux:84.2522x1 lm		
NAME: C5U-RC	TYPE:	WEIGHT:
SPEC.:	DIM.:	SERIAL No.:2023032302
MFR.: JEWOO	SUR.:0.05	PROTECTION ANGLE:

Conical surface Flux(90deg):

74.035 lm
 %lum = 87.9%
 %lamp = 87.9%

Conical surface Flux(70deg):

80.259 lm
 %lum = 95.3%
 %lamp = 95.3%



MAX = 369.75
 MIN = 2.4996
 AVG = 43.383
 AVG/MAX = 0.12
 MIN/MAX = 0.01

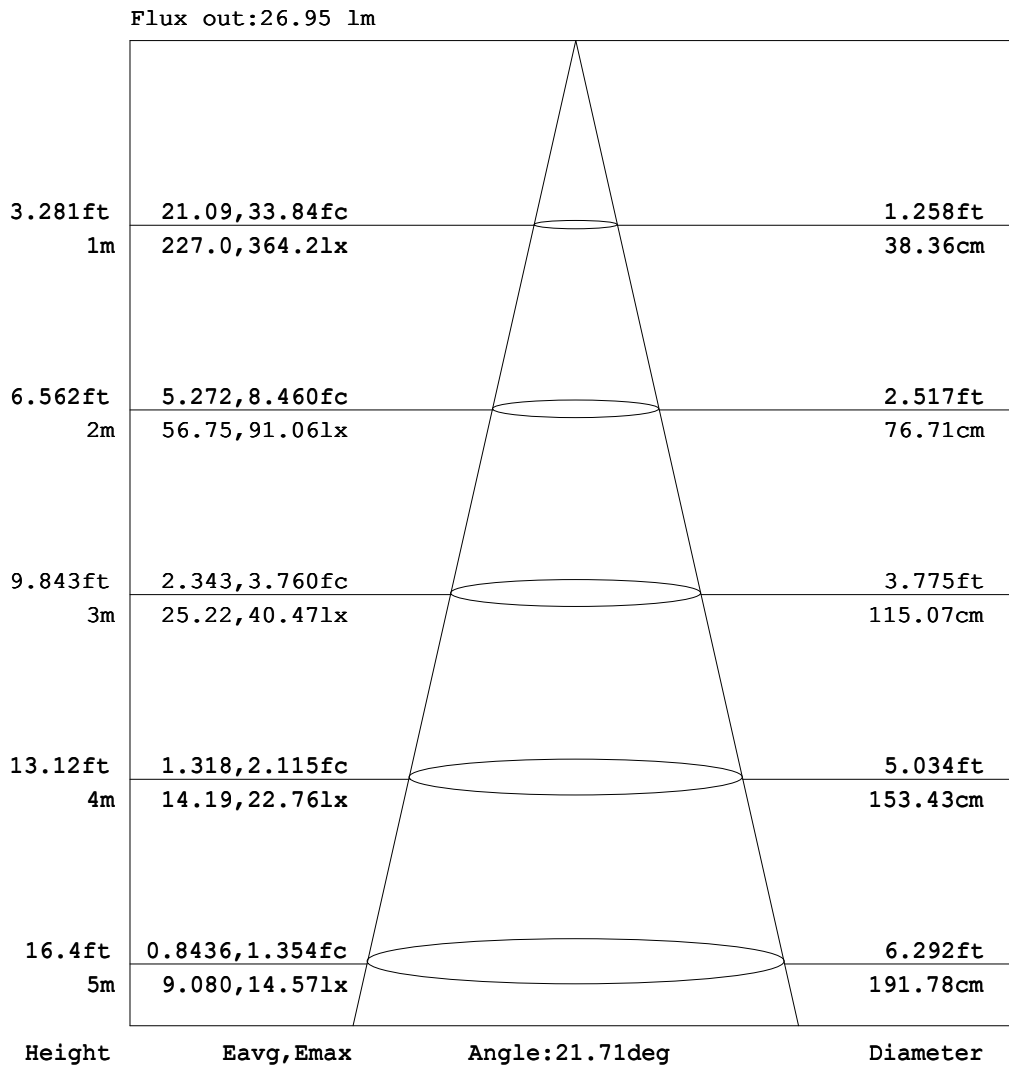
Imax:369.7 (H4.0,V-4.0)
 (At:C=45.0, Gamma=5.5)
 UNIT: cd

C Range: 0 - 360DEG
 C Interval: 5.0DEG
 Test Speed: HIGH
 Temperature:25.3DEG
 Operators:HJL
 Test Date:2023-03-23

γ Range: 0 - 90DEG
 γ Interval: 0.5DEG
 Test System:EVERFINE GO-2000H_V1 SYSTEM V2.0.287
 Humidity:65.0%
 Test Distance:13.252m [K=1.0000]
 Remarks:

AAI Figure

Test:U:0.0950V I:0A P:0W PF:0 Lamp Flux:84.2522x1 lm		
NAME: C5U-RC	TYPE:	WEIGHT:
SPEC.:	DIM.:	SERIAL No.:2023032302
MFR.: JEWOO	SUR.:0.05	PROTECTION ANGLE:



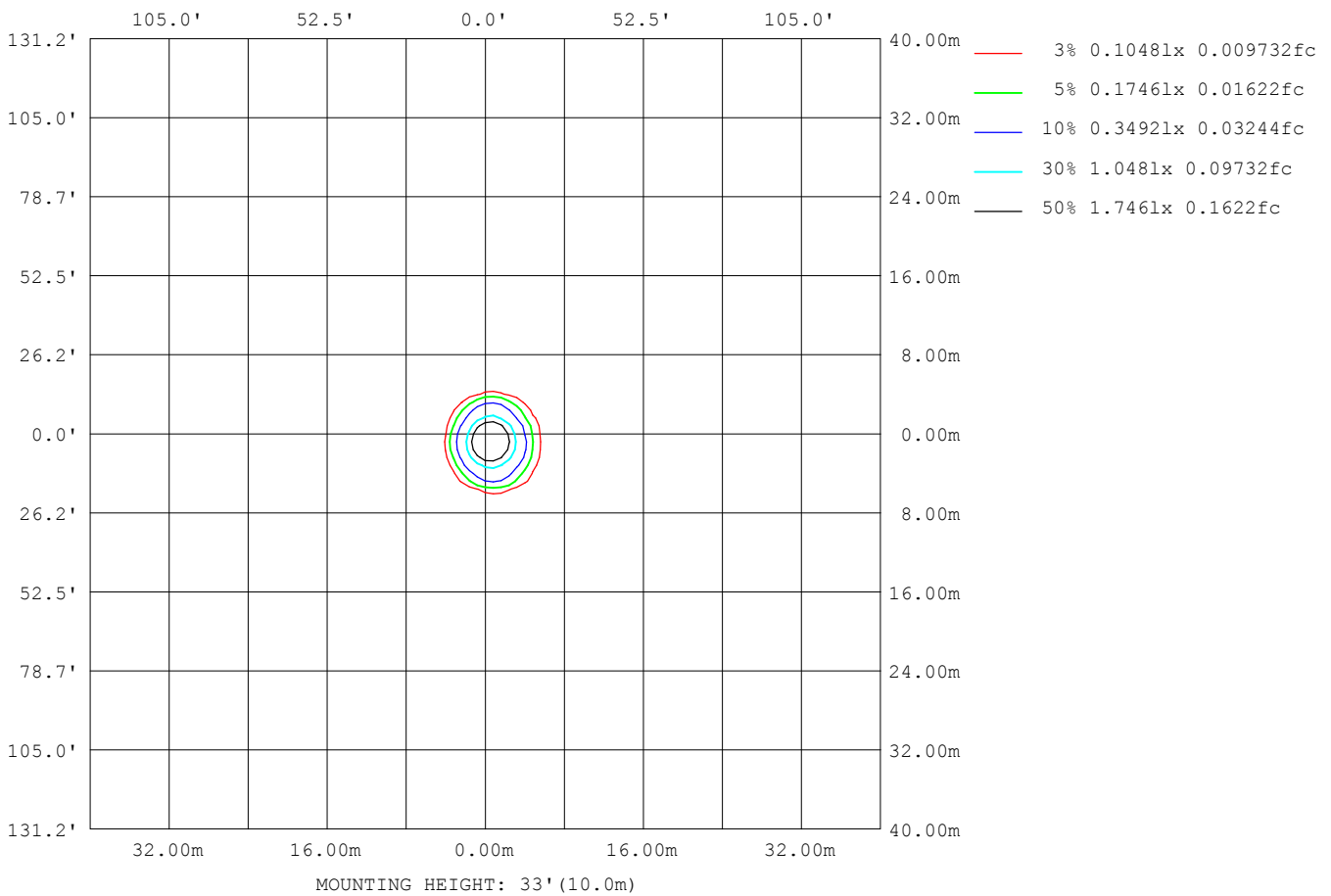
Note:The Curves indicate the illuminated area and the average illumination when the luminaire is at different distance.

C Range: 0 - 360DEG
 C Interval: 5.0DEG
 Test Speed: HIGH
 Temperature:25.3DEG
 Operators:HJL
 Test Date:2023-03-23

γ Range: 0 - 90DEG
 γ Interval: 0.5DEG
 Test System:EVERFINE GO-2000H_V1 SYSTEM V2.0.287
 Humidity:65.0%
 Test Distance:13.252m [K=1.0000]
 Remarks:

ISOLUX DIAGRAM

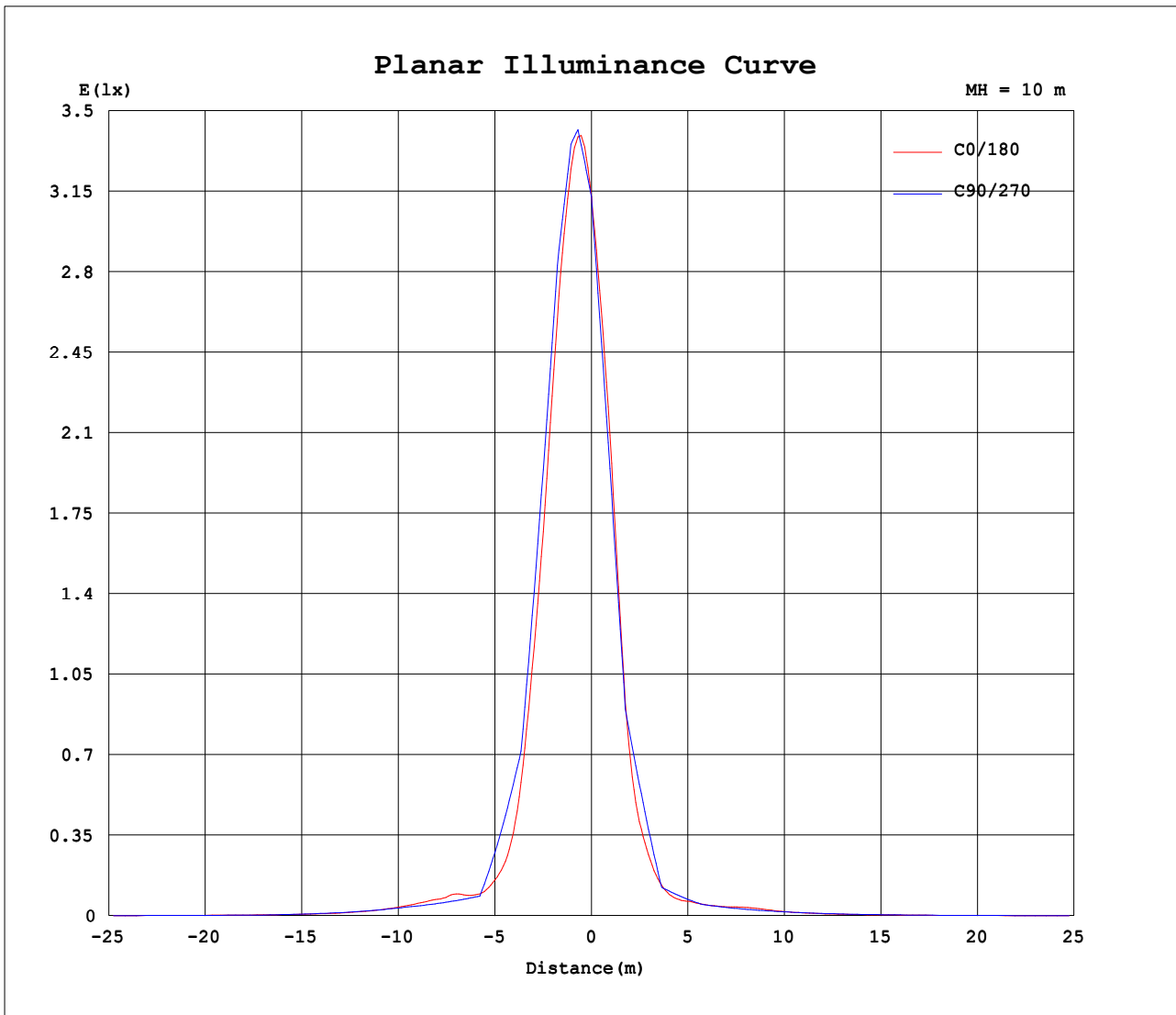
Test:U:0.0950V I:0A P:0W PF:0 Lamp Flux:84.2522x1 lm		
NAME: C5U-RC	TYPE:	WEIGHT:
SPEC.:	DIM.:	SERIAL No.:2023032302
MFR.: JEWOO	SUR.:0.05	PROTECTION ANGLE:



C Range: 0 - 360DEG
 C Interval: 5.0DEG
 Test Speed: HIGH
 Temperature:25.3DEG
 Operators:HJL
 Test Date:2023-03-23

γ Range: 0 - 90DEG
 γ Interval: 0.5DEG
 Test System:EVERFINE GO-2000H_V1 SYSTEM V2.0.287
 Humidity:65.0%
 Test Distance:13.252m [K=1.0000]
 Remarks:

Planar Illuminance Curve



C Range: 0 - 360DEG
 C Interval: 5.0DEG
 Test Speed: HIGH
 Temperature:25.3DEG
 Operators:HJL
 Test Date:2023-03-23

γ Range: 0 - 90DEG
 γ Interval: 0.5DEG
 Test System:EVERFINE GO-2000H_V1 SYSTEM V2.0.287
 Humidity:65.0%
 Test Distance:13.252m [K=1.0000]
 Remarks:

LUMINOUS DISTRIBUTION INTENSITY DATA

Test:U:0.0950V I:0A P:0W PF:0 Lamp Flux:84.2522x1 lm		
NAME: C5U-RC	TYPE:	WEIGHT:
SPEC.:	DIM.:	SERIAL No.:2023032302
MFR.: JEWOO	SUR.:0.05	PROTECTION ANGLE:

Table--1

UNIT: cd

C (DEG) γ (DEG)	0	5	10	15	20	25	30	35	40	45	50	55	60	65	70	75	80	85	90
0	313	313	313	313	313	313	313	313	313	313	313	313	313	313	313	313	313	313	313
5	338	341	344	347	351	354	358	362	364	366	368	368	366	364	360	357	352	348	343
10	272	277	284	293	302	312	317	323	326	327	327	327	327	325	322	318	312	305	296
15	162	168	177	189	197	205	211	218	225	228	229	229	228	225	221	216	209	201	191
20	70.0	76.7	86.0	93.9	99.8	105	110	112	116	120	124	125	125	121	116	109	102	94.5	86.4
25	26.7	28.3	30.7	32.7	35.6	39.4	43.7	47.3	48.7	47.7	47.2	52.2	57.3	60.4	61.4	60.4	58.2	54.7	49.8
30	14.7	15.2	16.0	16.5	17.4	18.3	18.6	19.2	20.0	21.4	22.7	24.7	26.7	26.5	24.5	21.2	17.7	14.9	13.2
35	17.4	17.4	17.1	16.6	15.6	15.6	15.4	14.8	15.3	16.3	15.4	13.1	12.5	12.6	13.1	13.4	13.4	12.9	12.1
40	14.5	15.3	15.8	15.7	15.8	15.7	15.3	14.9	15.6	15.8	14.3	12.5	11.5	11.4	11.7	12.0	12.0	11.5	10.9
45	10.5	10.9	11.4	11.6	12.0	11.9	12.3	12.4	12.1	12.5	11.8	11.0	10.3	10.3	10.4	10.7	10.5	10.00	9.62
50	6.84	6.94	7.15	7.43	7.75	8.01	8.39	8.62	8.58	8.38	8.36	7.98	8.36	8.61	8.47	8.38	8.13	7.70	7.39
55	4.46	4.46	4.55	4.67	4.85	5.02	5.29	5.55	5.39	5.26	5.60	5.86	6.05	6.23	6.07	5.86	5.60	5.28	5.04
60	3.10	3.14	3.13	3.21	3.33	3.52	3.50	3.45	3.62	3.80	4.03	4.17	4.05	4.00	3.71	3.38	3.07	2.84	2.68
65	2.32	2.38	2.30	2.48	2.49	2.46	2.66	2.61	2.71	2.75	2.72	2.77	2.64	2.64	2.56	2.48	2.37	2.28	2.21
70	1.80	1.79	1.79	1.82	1.84	1.91	2.03	2.02	2.02	2.01	2.00	2.07	1.97	1.95	1.90	1.88	1.81	1.74	1.73
75	1.43	1.38	1.47	1.45	1.50	1.58	1.61	1.56	1.54	1.49	1.42	1.47	1.45	1.47	1.45	1.46	1.41	1.35	1.35
80	1.01	1.00	0.96	1.09	1.11	1.08	1.10	1.12	1.14	1.10	1.06	1.08	1.08	1.09	1.07	1.06	1.02	0.97	0.96
85	0.59	0.52	0.61	0.55	0.62	0.66	0.71	0.71	0.74	0.71	0.70	0.71	0.71	0.71	0.70	0.67	0.62	0.58	0.57
90	0.02	0.11	0.28	0.29	0.33	0.34	0.34	0.34	0.34	0.34	0.34	0.34	0.34	0.34	0.33	0.28	0.22	0.20	0.19

C Range: 0 - 360DEG
 C Interval: 5.0DEG
 Test Speed: HIGH
 Temperature:25.3DEG
 Operators:HJL
 Test Date:2023-03-23

γ Range: 0 - 90DEG
 γ Interval: 0.5DEG
 Test System:EVERFINE GO-2000H_V1 SYSTEM V2.0.287
 Humidity:65.0%
 Test Distance:13.252m [K=1.0000]
 Remarks:

